



Evering Road, N16

£500,000

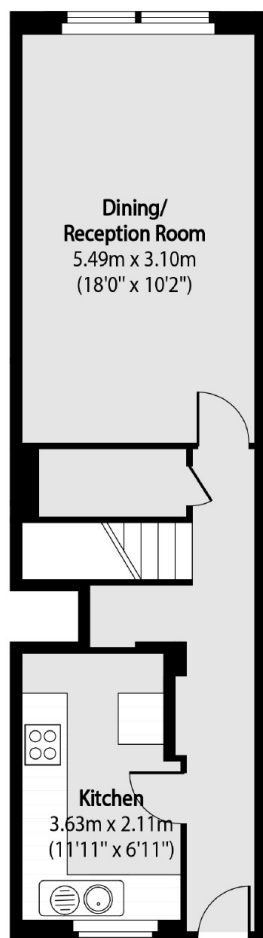
A three double bedroom maisonette measuring 940 sq ft in a low rise purpose built block. There is a separate kitchen, W/C, ample storage and benefits from having double aspect and being sold chain free.

Heatherley Court is located on a quiet residential street in Stoke Newington. It is only 240 ft from Rectory Road Overground and half a mile to Clapton Overground giving you good transport links to the rest of the City. The green spaces of Stoke Newington Common and Hackney Downs Park are both half a mile away.

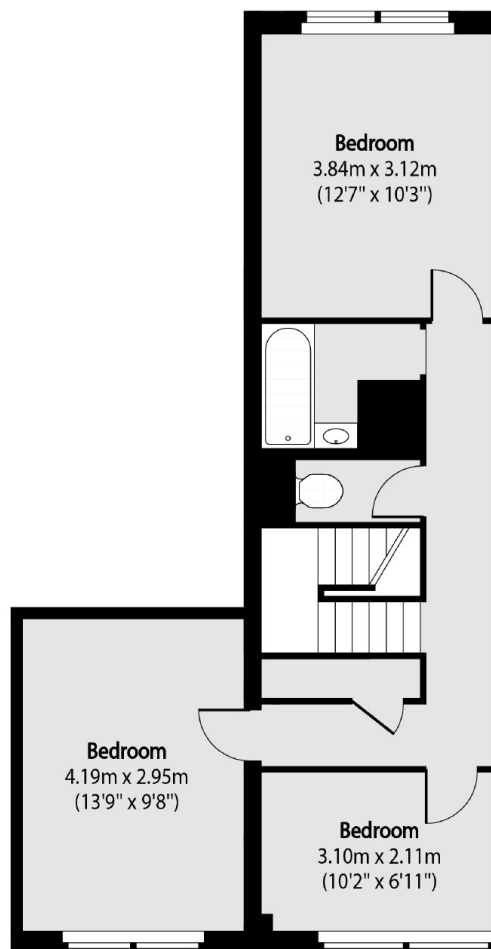
Features

Offers Over
Three Double Bedrooms
Maisonette
Chain Free
940 sq ft
Rectory Road Station
Hackney Downs Park

Evering Road, London, N16



Second Floor



Third Floor

Total area (approx): 87.33 sq m (940 sq. ft)