

## Warwick Grove, E5

£425,000

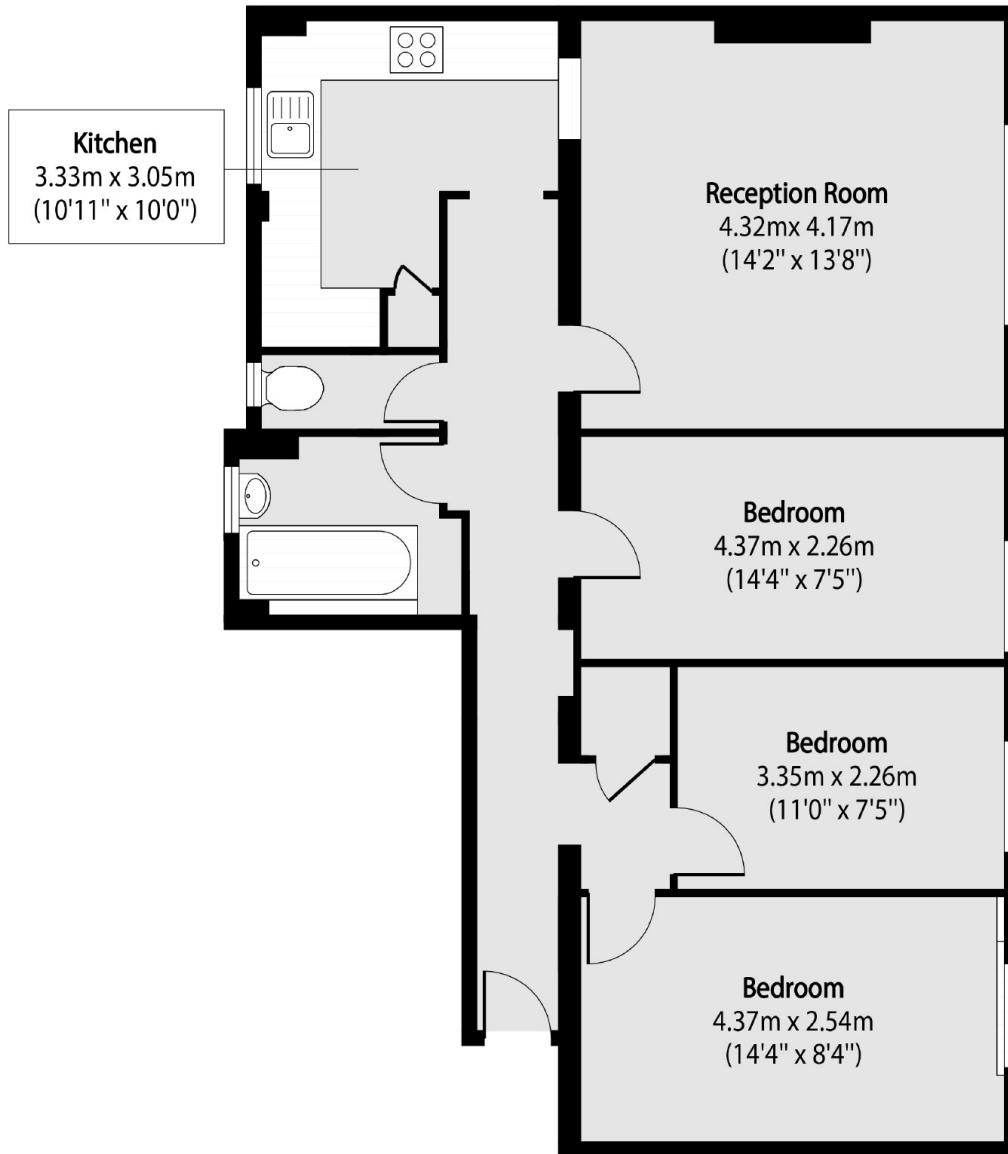
A spacious three bedroom property occupying the first floor of a purpose built block. The property is flooded in natural light and the bedrooms are generously proportioned. Comprising of three double bedrooms, a reception room, a family bathroom with a separate w/c and a kitchen.

The property is located in the middle of the popular green spaces of Springfield Park and the Marshes. In addition to there being numerous bus links close by, Clapton Overground Station is within walking distance.

### Features

Purpose Built Block  
Three Bedrooms  
First Floor  
Bright and Spacious  
Close to Springfield Park  
Clapton Overground Nearby

# Warwick Grove, London, E5



Total area (approx): 74.69 sq m (804 sq. ft)