



Tolsford Road, E5

£425,000

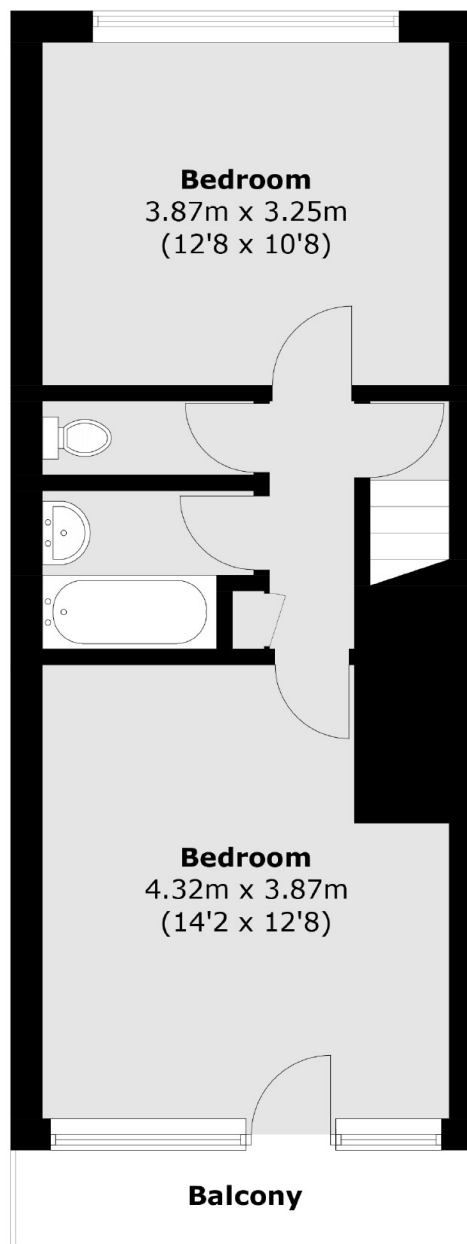
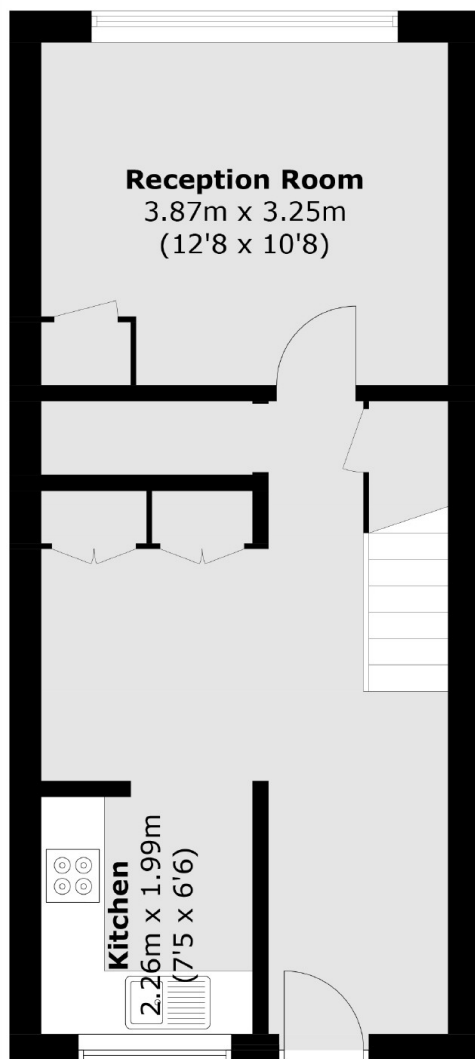
A two double bedroom maisonette measuring over 800 sqft with a south facing private balcony. The property is located within a low rise purpose built block in the heart of Hackney Central. It is being sold chain free.

Tolsford Road is located down a cul-de-sac just off Hackney Central, offering many amenities, shops, cafes and restaurants. Hackney Downs and Hackney Central Overground are less than half a mile away as well as the green spaces of Hackney Downs Park and Clapton Square.

Features

Offers Over
Two Double Bedrooms
South Facing Private Balcony
Maisonette
Hackney Central
Over 800 sq ft
Chain Free

Tolsford Road, London, E5



Total area (approx.): 75.7 sq. m (814.8 sq. ft)
Balcony area (approx.): 3.9 sq. m (42.0 sq. ft)