



Homerton High Street, E9

£350,000

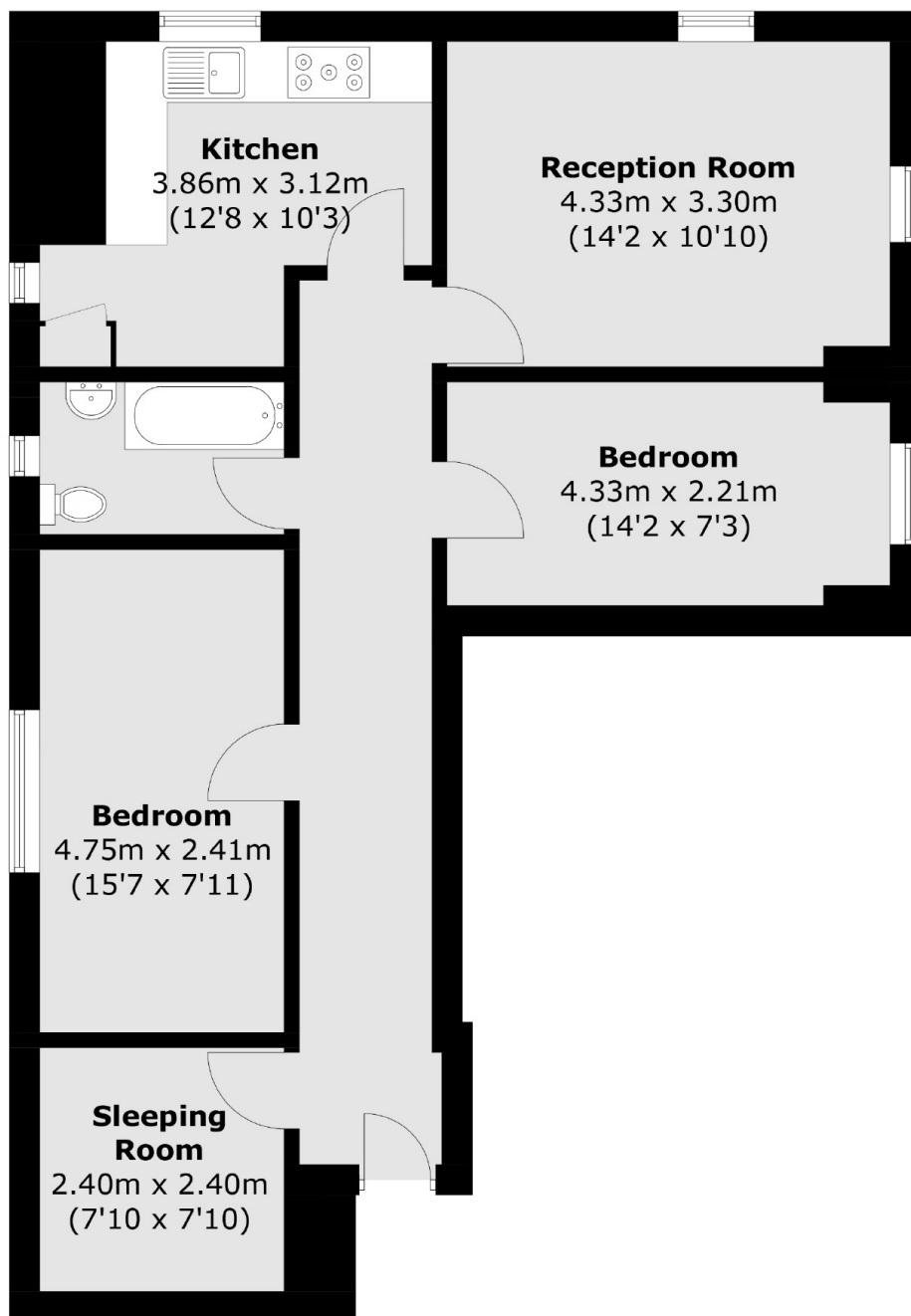
A two double bedroom apartment measuring over 760sq ft just off of Homerton High Street. This property benefits from being on the second floor, a separate kitchen, lift access, additional sleeping room and its proximity to Chatsworth Road and Homerton Overground.

Nisbet House is less than a quarter of a mile from Homerton Overground and a half mile from Hackney Central Overground giving you excellent links to the rest of the City. The property is centrally located with the shops, restaurants and bars of Mare Street within a half mile walking distance and lies within the catchment area of many good schools.

Features

- Two Double Bedrooms + Sleeping Room
- Lift Access
- Transport Links
- Over 760 sq ft
- Chatsworth Road
- Communal Gardens

Homerton High Street, London, E9



Total area (approx.): 70.7 sq. m (761.0 sq. ft)