



**Graham Road, E8**

£795,000

**Dexters**



## Graham Road, E8

A two double bedroom split level period conversion measuring over 950 sq ft in the heart of Hackney. The property has been recently refurbished and in excellent condition whilst retaining many of its period features. It has a separate kitchen, double height ceilings, sash windows, feature fireplace, ensuite and a Share of the Freehold.

Graham Road runs between Dalston and Mare Street with many shops, cafes and amenities to choose from including Broadway Market. It is under half a mile from London Fields and its tennis courts and Lido. Hackney Central and Hackney Downs Overground is a quarter of a mile away.

### Features

- Two Double Bedrooms
- Period Conversion
- Split Level
- Sash Windows
- Share of Freehold





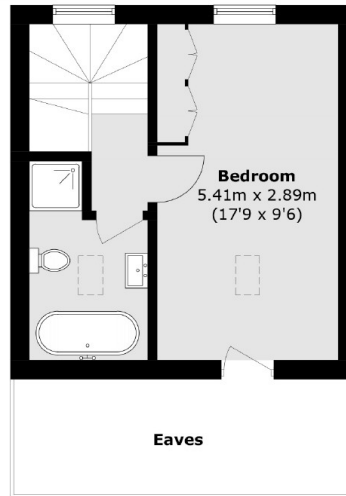




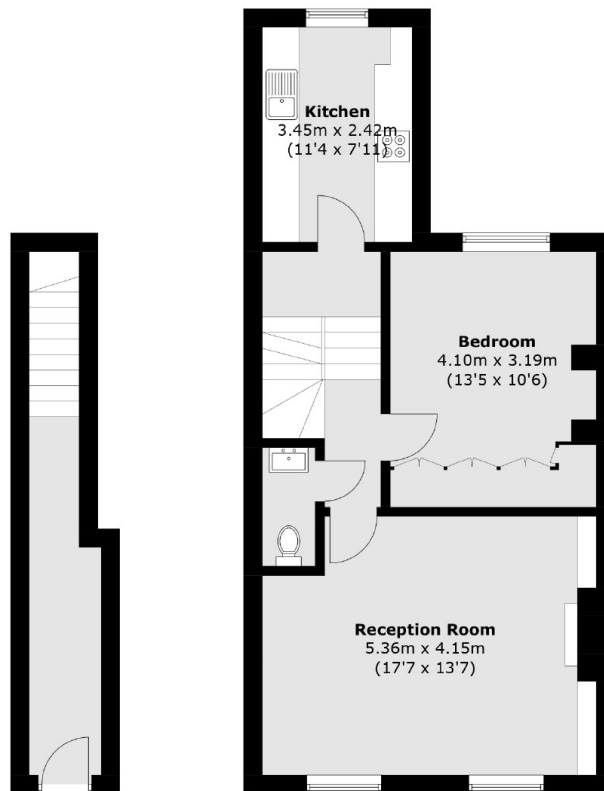




# Graham Road, London, E8



**Second Floor**



**Ground Floor**

**First Floor**

Total area (approx.): 88.4 sq. m (951.5 sq. ft)  
(Excluding Eaves)