



Framlingham Close, E5

£575,000

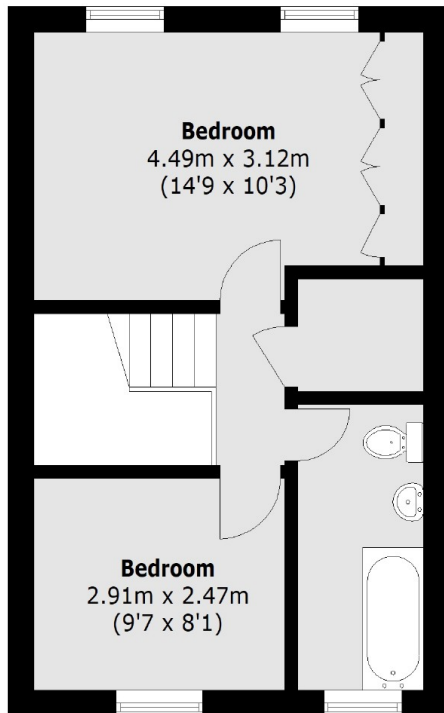
A three bedroom maisonette, with a front garden and private balcony, around the corner from Millfields Park. The property measures over 940 sq ft and benefits from wooden flooring, separate kitchen and it's own private entrance.

Located on Southwold Road, the property is under a quarter of a mile from Clapton Overground which is only three stops to Liverpool Street Station and the Elizabeth Line. Millfields Park, Walthamstow Marshes, Hackney Marshes and the River Lea are all in close proximity.

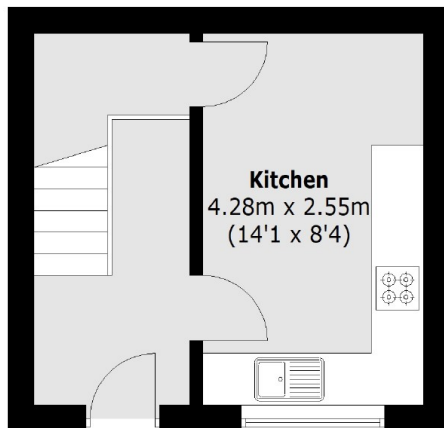
Features

- Three Bedrooms
- Maisonette
- Private Entrance
- Front Garden
- South Facing Balcony

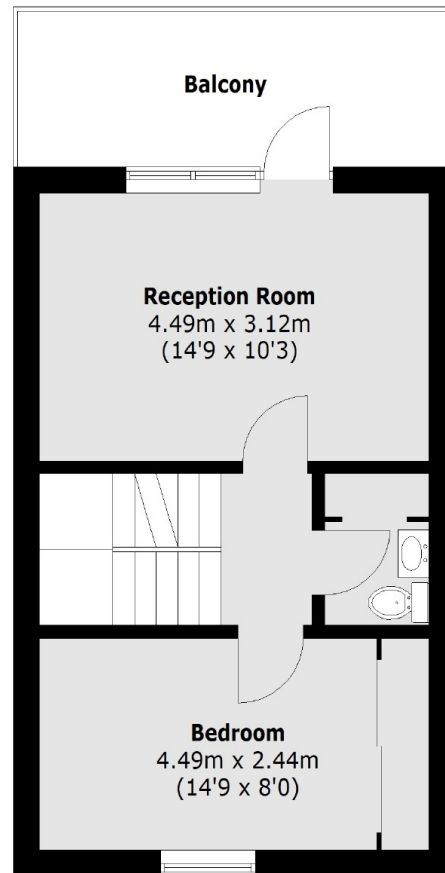
Framlingham Close, London, E5



Second Floor



Ground Floor



First Floor

Total area (approx.):88.0 sq. m (947.2 Sq. ft)
Balcony:9.4 sq. m (101.2 Sq. ft)