



## Florfield Passage, E8

£600,000

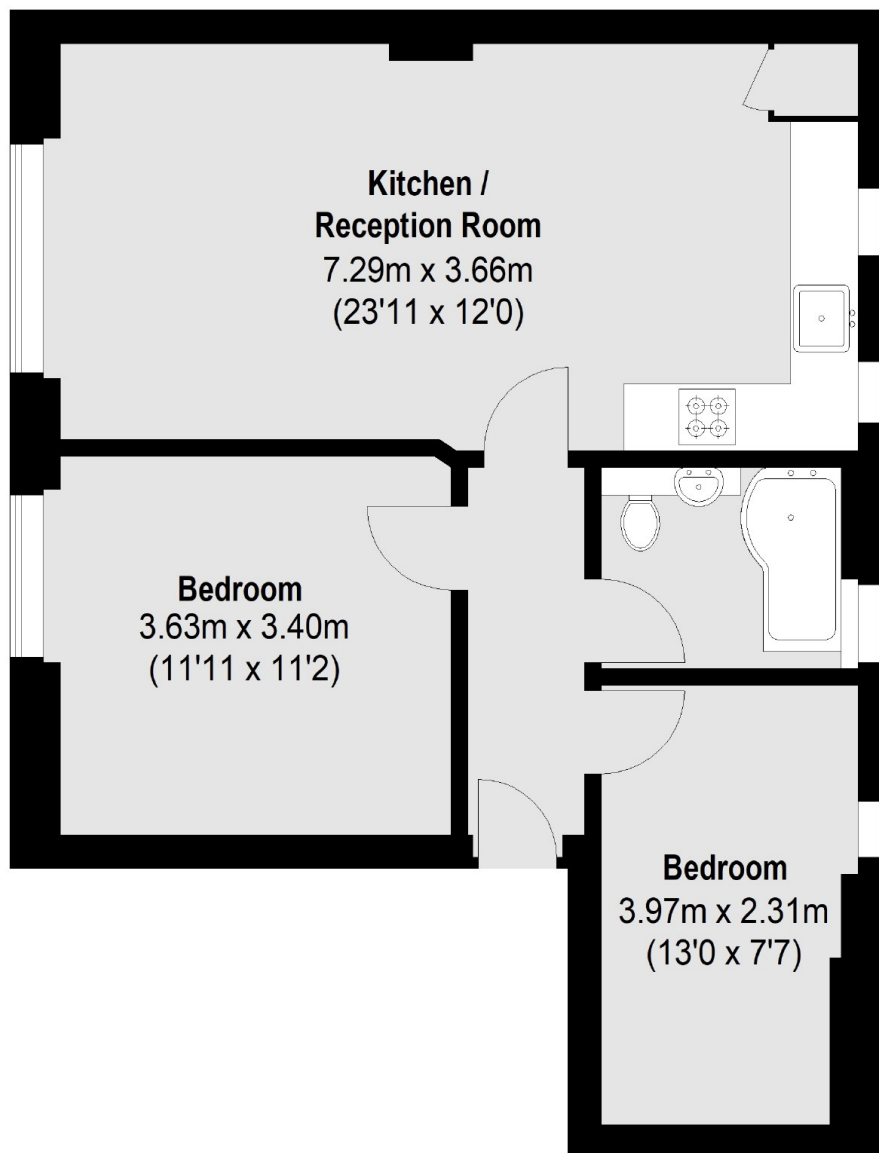
A two double bedroom warehouse conversion situated just off Mare Street and close to London Fields. The property comprises of exposed brickwork, a recently renovated bathroom, kitchen and flooring. The property also benefits from high ceilings, crittall-style windows and a shared courtyard. It is being sold chain free.

Situated on a pedestrian street the apartment is a short walk from London Fields Park, a lido, tennis courts and Broadway Market. The property is also situated within close proximity to Hackney Central and London Fields overground station for easy access to the City and Central London.

### Features

- Chain Free
- Two Double Bedrooms
- Warehouse Conversion
- Shared Courtyard
- Recently Renovated
- High Ceilings
- London Fields

# Florfield Passage, London, E8



## First Floor

Total area (approx.): 57.97 sq. m (624 Sq. ft)