



Apartment

**46 CARPENTERS  
WYND, ALLOA,  
CLACKMANNANSHIRE  
FK10 1LY**

Per month

**£850 Per**

FEATURES



# 2 Bedroom Apartment located in Alloa

Golden Tree Estates is proud to welcome you to this charming first-floor apartment located in the serene and well-maintained area of Carpenters Wynd, Alloa. Spanning an impressive 732 square feet, this delightful residence offers a perfect blend of comfort and convenience.

Upon entering, you will find a spacious reception room that invites natural light, creating a warm and welcoming atmosphere. The apartment features two well-proportioned bedrooms, ideal for a small family or professionals seeking a peaceful retreat. The modern bathroom is designed for both functionality and style, ensuring a pleasant experience for residents.

This property is fully electric, equipped with brand new electric heaters that provide efficient warmth during the cooler months. The bright and airy feel of the apartment is enhanced by its first-floor position, allowing for ample sunlight to fill the living spaces.

Situated in a quiet neighbourhood, this apartment offers a tranquil living environment while still being conveniently located near local amenities. Whether you are looking to enjoy a leisurely stroll in the nearby parks or access essential services, this location caters to all your needs.

Call us on

01786463525

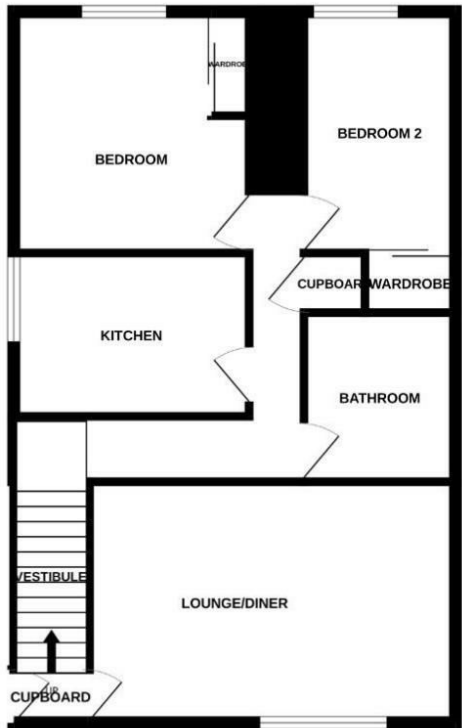
office@goldentree.online

www.goldentree.online

Council Tax Band

C

GROUND FLOOR



Energy Efficiency Rating		
	Current	Potential
Very energy efficient - lower running costs		
(92 plus) A		
(81-91) B		
(69-80) C		
(55-68) D		
(39-54) E		
(21-38) F		
(1-20) G		
Not energy efficient - higher running costs		
Scotland	EU Directive 2002/91/EC	

Agents Note: Whilst every care has been taken to prepare these particulars, they are for guidance purposes only. All measurements are approximate and are for general guidance purposes only and whilst every care has been taken to ensure their accuracy, they should not be relied upon and potential buyers are advised to recheck the measurements.

