





GOLDEN TREE ESTATES  
SALES & LETTINGS

## 1/1, 30 Northland Drive

Offers Over £154,000

 2  1  1



Golden Tree Estates is delighted to present this well-kept two-bedroom first-floor flat. Ideally located near local amenities and providing easy access to Glasgow's West End, this property is perfect for those seeking convenience and comfort.

The accommodation includes an entrance hallway leading to the lounge and kitchen. The kitchen features all the necessary and it has a modern look. There are two bedrooms and a shower room with a three-piece white suite, including a WC, wash hand basin, and waterfall shower cubicle.

Additional features include gas central heating, double glazing, a south-facing balcony, and secure entry.



GOLDEN TREE ESTATES  
SALES & LETTINGS

## Key Features

- Fantastic Location For Local Amenities
- Two Double Bedrooms
- Gas Central Heating
- Secure Entry
- South Facing Spacious Balcony
- Well Kept Two Bedroom Flat
- Parking
- Double Glazed Windows
- Shower Room
- Modern look

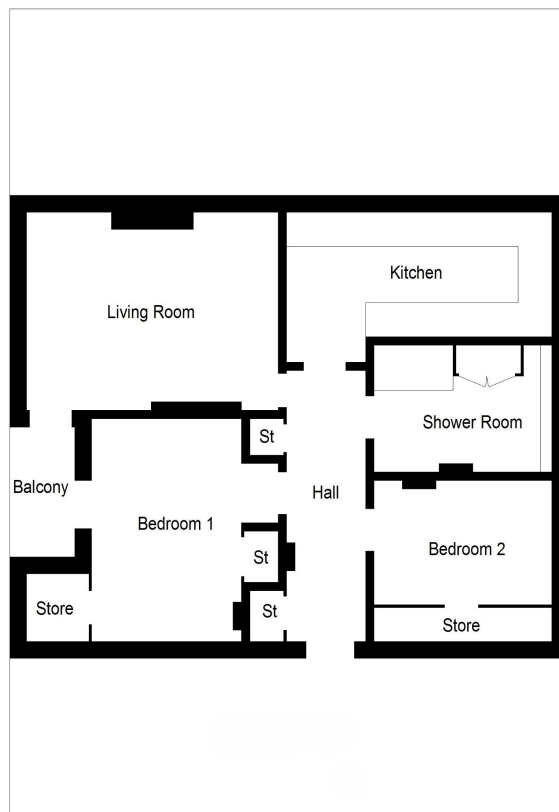


Illustration for identification purposes only, measurements are approximate, not to scale. floorplansUsketch.com © (ID1088139)