



GOLDEN TREE ESTATES
SALES & LETTINGS

95 Mary Stevenson Drive

Offers Over £179,500

3 2 1



Golden Tree Estates is proud to introduce this fantastic 3 bedroom semi-detached house located in the tranquil area of Alloa, less than 5 miles from Stirling. This modern house boasts a spacious living room. Nestled within a serene and contemporary residential estate, this freshly decorated house is in great condition, ready for you to move in. The interior is adorned with stylish contemporary designs. The convenient layout includes a roomy entrance hall, a generously sized lounge, well-appointed kitchen and 3 bedrooms.

Gas central heating, and full double glazing windows. Private back garden and private driveway included.

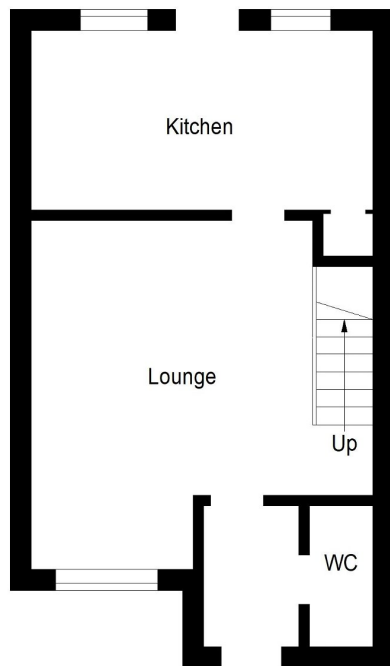


GOLDEN TREE ESTATES
SALES & LETTINGS

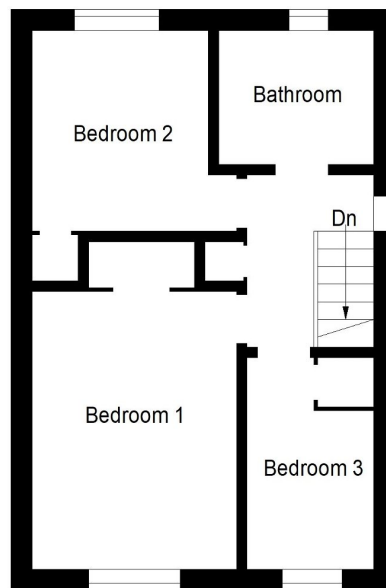
Key Features

- Spacious living room
- Private parking in driveway
- Beautiful scenery
- Semi-detached house
- Family bathroom upstairs and toilet downstairs
- Three Bedrooms
- Private back garden
- Freshly decorated
- Walk in Condition
- Stylish kitchen

Approximate Gross Internal Area = 76.8 sq m / 826 sq ft



Ground Floor



First Floor

Illustration For Identification Purposes Only. Not To Scale (ID:1069555 / Ref:87713)