



Murray Commercial
Property Consultants

To Let Ground Floor Shop

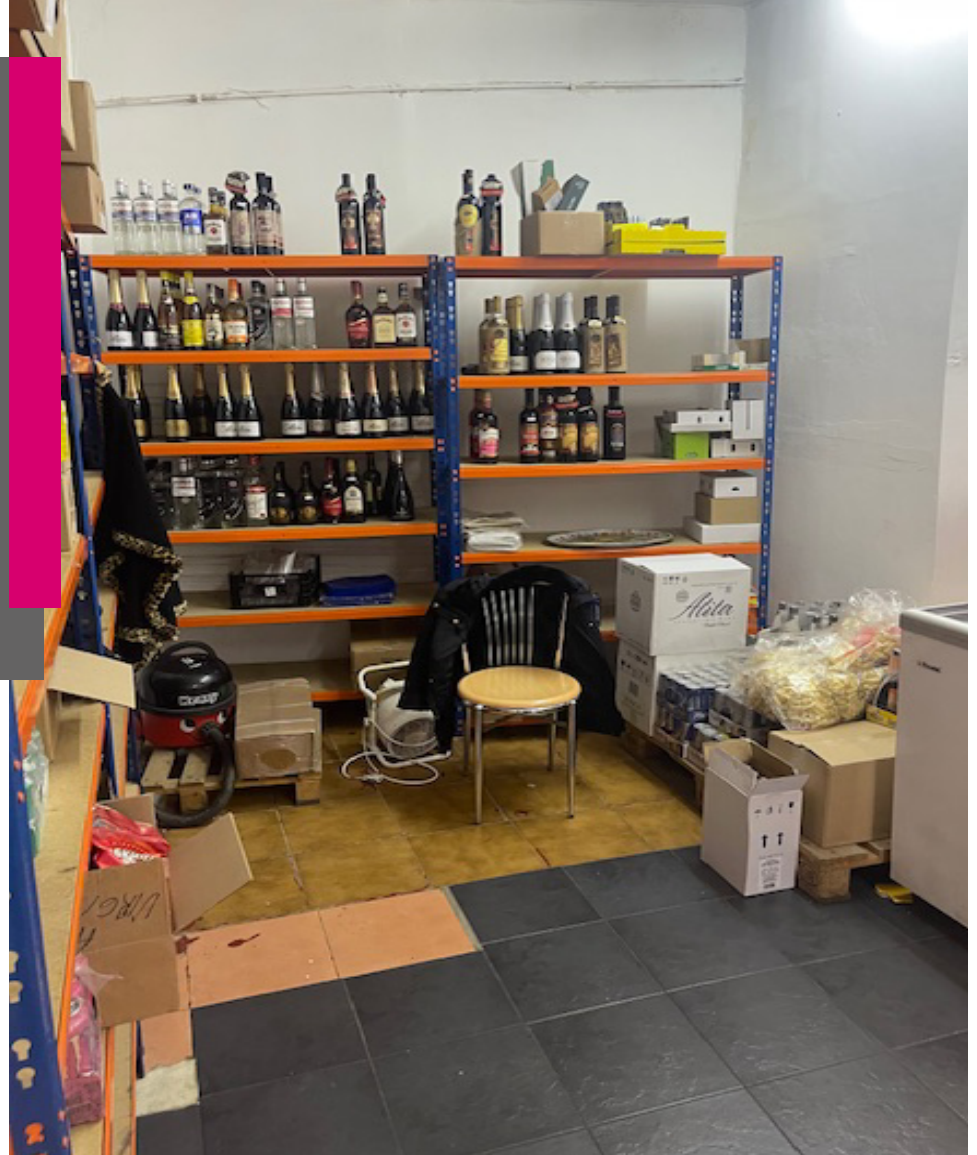
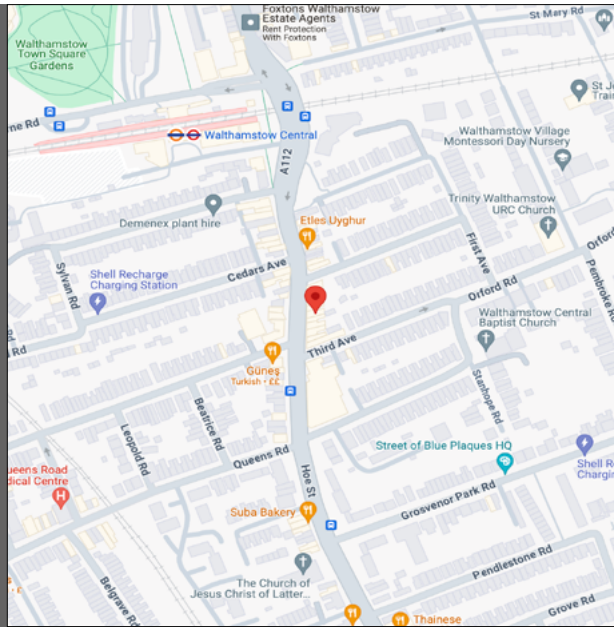
**251 Hoe Street
Walthamstow
London E17 9PT**

- VAT Free Unit
- Suitable For A Range of Uses
(Presently a supermarket)
- No Premium



LOCATION

The property is located in the centre of Walthamstow in this fast improving residential and business location. The property is less than a 2 minute walk to Walthamstow Central Underground and Main Line Station. All Town Centre amenities are readily and easily accessible including Walthamstow Street Market which operates Tuesday to Saturday. Hoe Street contains a number of multiples as well as a strong collection of independent businesses.



DESCRIPTION

The premises forms part of a larger building and is arranged exclusively over ground floor only behind a glazed frontage with access to a rear yard.

payable of approximately £2246 per annum for qualifying businesses. The rates payable incorporates the Retail, Hospitality and Leisure Relief Scheme.

BUSINESS RATES

The property is an area administered by The London Borough of Hackney. The VOA website shows the current rateable value is £18,000 giving rise to rates

TERMS

A New Effective Full Repairing and Insuring Lease is available the terms of which are negotiable.

RENT

£28,600 per annum exclusive



VIEWING AND FURTHER INFORMATION

Strictly by appointment through the Sole Agent:
James Bacon
Mob: 07501 598 981
Email: james@murraycommercial.co.uk