



Persimmon

Together, we make your home



Summerhill Park

Maghull • Liverpool

Together, we make your home

When it comes to designing a new development, we apply the same philosophy every time – make it unique, make it personal. That’s because we understand your new home is more than simply bricks and mortar. It’s a private place of sanctuary where we hope you’ll laugh, entertain and escape for many years to come.

*“As we celebrate 50 years,
find out more about us
on page 4”*



5 stars!

We're proud of our 5 star builder status awarded by the national Home Builders Federation (HBF). It's a reflection of our commitment to delivering excellence always and putting our customers at the heart of all we do.



Summerhill Park

Find out more

About Persimmon Homes	4
Your journey with us and schemes to help	6
Living at Summerhill Park	8
Development layout	10
Our homes	12
Specifications	26
Sustainability	28
Personalise with Finishing Touches	30
Proud to be building communities	32
Reasons to buy from us	34



Who we are

A little bit about us

You're about to make one of the most exciting investments of your life! A beautiful place to call home for years to come. Here are some reasons to invest in a Persimmon home...

50-year pedigree

We've been building homes and communities since the early seventies, and just as fashions have moved on, so too has construction. Over half a century we've perfected processes, fine-tuned materials and honed skills to make us one of today's most modern and progressive home builders.

Sustainability mission

We're committed to reducing our impact on the planet and building for a better tomorrow, with a dedicated in-house team focused on this. [Read more on page 28](#)

Persimmon in numbers

It's not all about numbers we know, but to give you sense of scale here are a few:

14,551

homes
sold in
2021

200+

locations
across
the UK

5000+

employees
make it all
happen

300+

apprentices
taken on
each year

£1.8m

donated to
c.900 charities
in 2021



“Target 50 forms part of our 50th Anniversary celebrations”



Women in construction

‘Target 50’ is a Persimmon initiative based on our ambition to recruit 50 female apprentices or technical trainees into construction-related roles across the UK through 2022.

Giving back

We do everything we can to give back to our communities and have proudly contributed towards community hubs, children’s play areas, schools and sports facilities.

Our ‘Community Champions’ and ‘Building Futures’ programmes help to raise funds for projects and charities across Great Britain. If you’d like to get involved visit persimmonhomes.com/community-champions to see if you could apply to support your local community.



Real Living Wage

We’re proud to be accredited to the Real Living Wage. We value our employees and want to pay them fairly for the good work they do.

Like to know more? Just scan the QR code below.



Happy hour?

We run Customer Construction Clinics from our on-site sales offices each Monday from 5-6pm. Pop in to see the team both during and after you’ve moved in to your new home.



10-year warranty

When you buy a Persimmon home it comes complete with a ‘peace of mind’ 10-year insurance-backed warranty and our own two-year Persimmon warranty.



Help when you need it

You’ll have a dedicated customer care helpline, plus cover for emergencies like complete loss of electricity, gas, water or drainage.

Finishing Touches

We know you’ll want to make your home your own, so we created ‘Finishing Touches’, our home personalisation service.

Read more on page 30





With you all the way

Your journey with us

From finding your perfect new home to moving in, we're here to help every step of the way.

1.→ 2.→ 3.

Reservation

So you've seen a home you love? Speak to one of our friendly sales advisors who will help you secure your dream home.

Solicitor

You'll need to instruct a solicitor or conveyancer at the point of reservation. Your sales advisor can recommend a local independent company.

Mortgage application

Most people will need to apply for a mortgage. We can recommend independent financial advisors to give you the best impartial advice.

4.→ 5.→ 6.

Personalise!

The bit you've been waiting for! Making the final choices for your new home. Depending on build stage you can also choose from a range of Finishing Touches.

Exchange contracts

One step closer to moving in – this is where we exchange contracts and your solicitor will transfer your deposit.

Quality assurance

Your home will be thoroughly inspected by site teams and will also have an Independent Quality Inspection to make sure it's ready for you to move into.

7.→ 8.→ 9.

Home demo

Another exciting milestone! Here's where you get to see your new home before completion. You'll be shown how everything works and any questions can be answered.

Handover

The moment you've been waiting for! The paperwork has been completed, the money transferred and now it's time to move in and start unpacking...

Aftercare

Our site and customer care teams will support you every step of the way. You'll receive a dedicated customer care line number to deal with any issues.

[persimmonhomes.com](https://www.persimmonhomes.com)



Need help?

One of the best things about buying a new-build home is the amazing offers and schemes you could benefit from. T&Cs apply.



**PART
EXCHANGE**

Part Exchange

Need to sell your home? We could be your buyer. Save money and time and stay in your home until your new one completes.



**HOME
CHANGE**

Home Change

Sell your current home with our support. We'll take care of estate agent fees and offer expert advice to help get you moving.



**EARLY
BIRD**

Early bird

If you've found a plot that's perfect for you, the Early Bird Scheme could be just what you need to secure your dream home.



- Choice of 2, 3, 4 and 5-bedroom homes
- Perfectly situated for work/life balance
- Superb commuter location
- Excellent range of local amenities



Scan me!

For availability and pricing
on our beautiful new homes
at Summerhill Park



Maghull • Liverpool

Summerhill Park

Just less than 10 miles from the bustling centre of Liverpool, our new Summerhill Park development is perfectly situated for anyone seeking an ideal work/life balance in Merseyside.

Summerhill Park sits on the edge of the popular town of Maghull. There are several pubs, bars and cafés to enjoy, as well as local sports clubs and a leisure centre. For all the culture, entertainment and night-life you could need, hop on the train to reach the vibrant heart of Liverpool in less than 30 minutes. The city has endless attractions, from fascinating museums to the historic Royal Albert Dock, a wealth of shops, bars and restaurants.

If you're a nature lover, travel less than 7 miles to reach the sandy beach at Crosby, or 11 miles to reach Formby, a stunning National Trust seaside reserve. Even closer to home is Lunt Meadows Nature Reserve, a peaceful setting for a stroll.

Put family first

Families with children will benefit from several schools less than a mile away. These include Summer Hill Primary School, Northway Primary School and Deyes High School, all rated 'Good' by Ofsted. You'll find a number of nurseries in the vicinity, and for further education there's Deyes Sixth Form, colleges in Crosby and Sefton, and five universities in Liverpool.

Fabulous transport links

Maghull train station is a short walk from the development, and operates 25-minute services to Liverpool's Moorfields station. If you're travelling by road, Maghull is just a few minutes from the intersection of the M58 and M57, both of which lead to Manchester in under an hour.

EXPLORE

Jump in the car and start exploring

Maghull Train Station
1.5 miles

Liverpool
8.6 miles

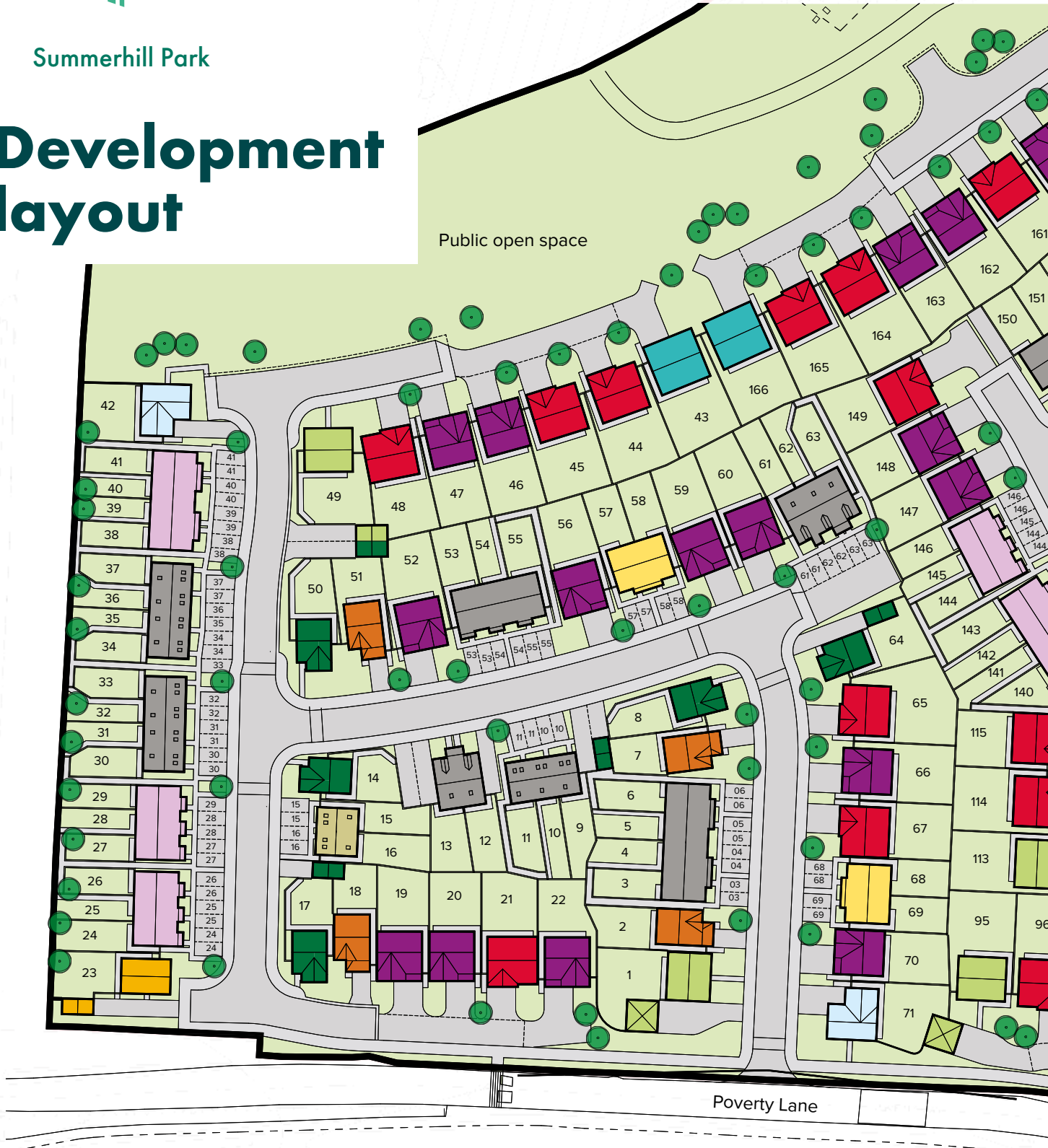
Liverpool John Lennon Airport
18.4 miles

Manchester
39.4 miles



Summerhill Park

Development layout



This site layout is intended for illustrative purposes only, and may be subject to change, for example, in response to market demand, ground conditions or technical and planning reasons. Trees, planting and public open space shown are indicative, actual numbers and positions may vary. This site plan does not form any part of a warranty or contract. Further information is available from a site sales advisor.

Our homes

2 bedroom

 The Alwick

3 bedroom

 The Moseley

 The Hanbury

 The Rufford

 The Souter

 The Hatfield

 The Clayton Corner

4 bedroom

 The Roseberry

 The Clandon Plus

 The Kendal

 The Chedworth

 The Winstar

5 bedroom

 The Tiverton

 Affordable Housing



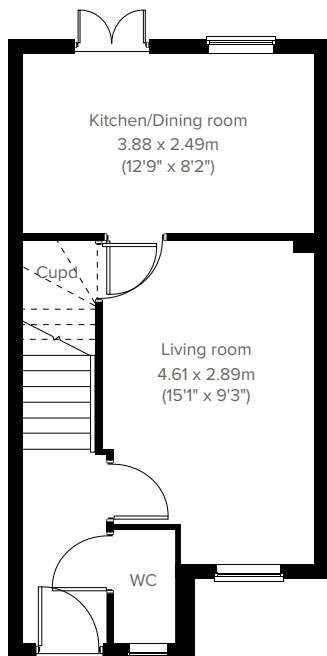


2 bedroom home

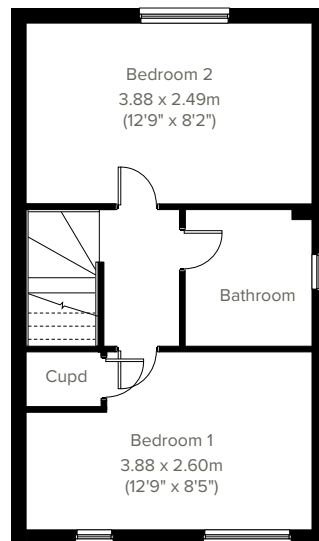
The Alnwick



Perfectly-proportioned, the Alnwick has a stylish open plan kitchen/dining room with French doors leading into the garden, two double bedrooms, a good-sized living room and off-road parking. Ideal if you're a first-time buyer looking for a fresh modern home you can make your own.



GROUND FLOOR



1ST FLOOR

Please note that elevation treatments and window/door positions may vary from plot to plot. Plot specific information will be confirmed on your reservation check list.

This information is for guidance only and does not form any part of any contract or constitute a warranty. Illustrations are of typical elevations and may vary. Floor plans are not drawn to scale and window positions may vary. Room dimensions are subject to a +/- 50mm (2") tolerance and are based on the maximum dimensions in each room. Please consult your sales advisor on site for specific elevations, room dimensions and external finishes. The EPC ratings are estimated and vary between home types, orientation and developments.

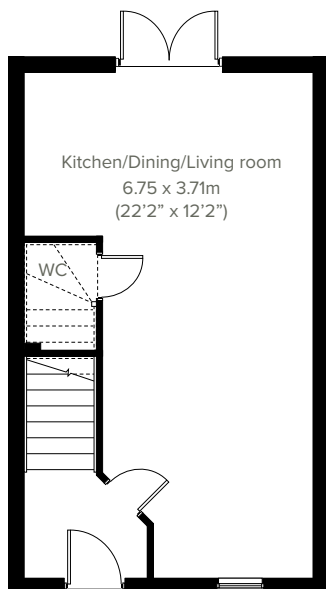


The Moseley

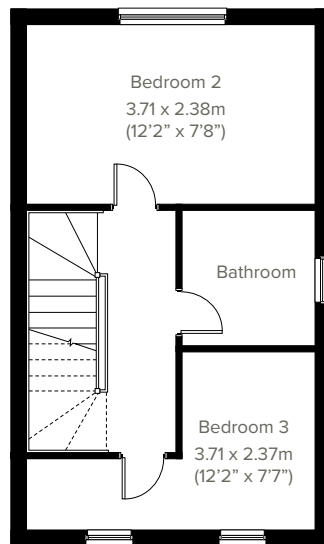
3 bedroom home



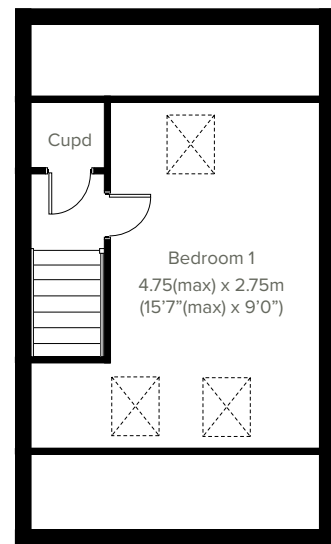
Perfect for the way we live today, the three-bedroom, 2.5-storey Moseley has a modern open plan kitchen/dining/living room with French doors leading to the garden - making it a home that's ideal for entertaining. Upstairs there are three nicely-proportioned bedrooms and a family-sized bathroom. Appealing to families, first-time buyers and young professionals.



GROUND FLOOR



1ST FLOOR



2ND FLOOR

Please note that elevation treatments and window/door positions may vary from plot to plot. Plot specific information will be confirmed on your reservation check list.

This information is for guidance only and does not form any part of any contract or constitute a warranty. Illustrations are of typical elevations and may vary. Floor plans are not drawn to scale and window positions may vary. Room dimensions are subject to a +/- 50mm (2") tolerance and are based on the maximum dimensions in each room. Please consult your sales advisor on site for specific elevations, room dimensions and external finishes. The EPC ratings are estimated and vary between home types, orientation and developments.

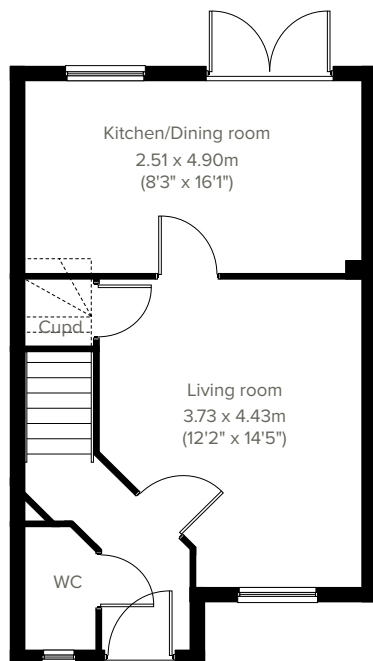


3 bedroom home

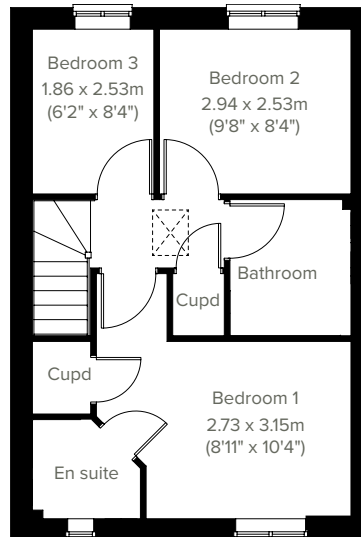
The Hanbury



Perfect for the way we live today, the three-bedroom Hanbury has a modern open plan kitchen/dining room with garden access and a spacious front-aspect living room that's ideal for entertaining. Upstairs there are three bedrooms - bedroom one has an en suite - and a family-sized bathroom. Appealing to families, first-time buyers and young professionals.



GROUND FLOOR



1ST FLOOR

Please note that elevation treatments and window/door positions may vary from plot to plot. Plot specific information will be confirmed on your reservation check list.

This information is for guidance only and does not form any part of any contract or constitute a warranty. Illustrations are of typical elevations and may vary. Floor plans are not drawn to scale and window positions may vary. Room dimensions are subject to a +/- 50mm (2") tolerance and are based on the maximum dimensions in each room. Please consult your sales advisor on site for specific elevations, room dimensions and external finishes. The EPC ratings are estimated and vary between home types, orientation and developments.

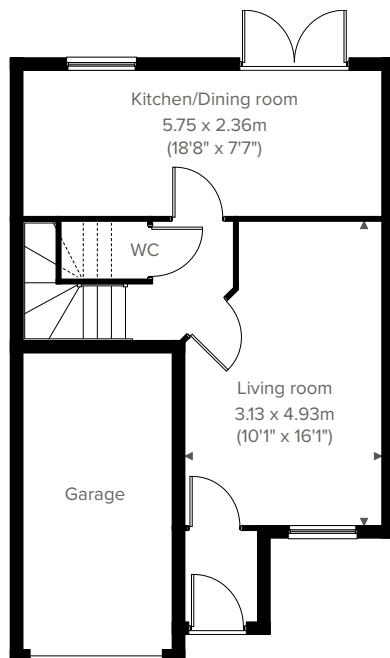


The Rufford

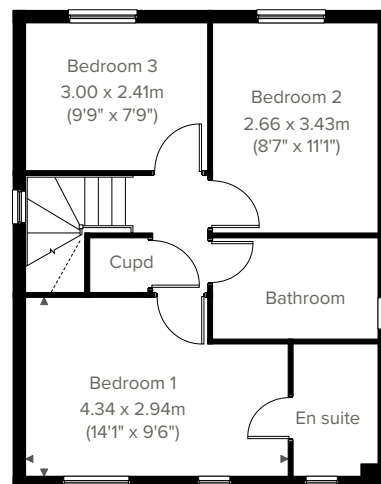
3 bedroom home



A thoughtfully-designed three-bedroom home with much to offer, the Rufford is popular with families. The bright and modern open plan kitchen/dining room with French doors leading into the garden is ideal for entertaining and family meals. The front porch, downstairs WC and cupboard takes care of everyday storage. Plus there's an en suite to bedroom one, family bathroom and integral garage.



GROUND FLOOR



1ST FLOOR

Please note that elevation treatments and window/door positions may vary from plot to plot. Plot specific information will be confirmed on your reservation check list.

This information is for guidance only and does not form any part of any contract or constitute a warranty. Illustrations are of typical elevations and may vary. Floor plans are not drawn to scale and window positions may vary. Room dimensions are subject to a +/- 50mm (2") tolerance and are based on the maximum dimensions in each room. Please consult your sales advisor on site for specific elevations, room dimensions and external finishes. The EPC ratings are estimated and vary between home types, orientation and developments.

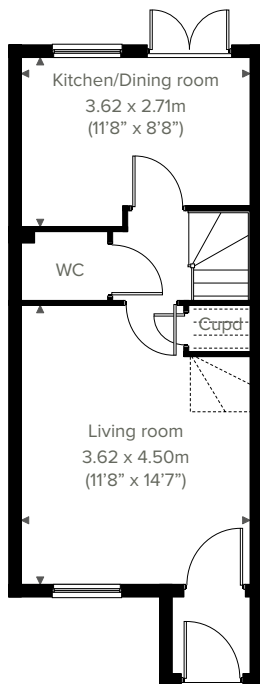


3 bedroom home

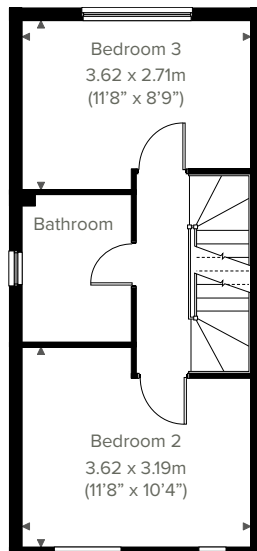
The Souther



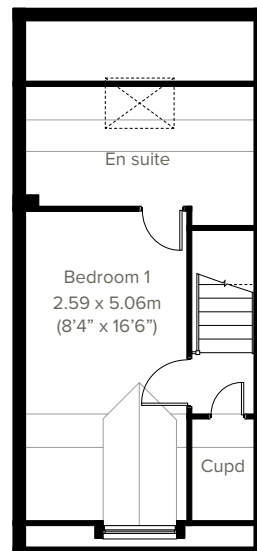
An attractive three-storey, three-bedroom home, the Souther has a modern open plan kitchen/dining room, well-proportioned living room and three good-sized bedrooms; the top floor bedroom one also has a spacious en suite. The enclosed porch, downstairs WC, two storage cupboards and off-road parking means it's practical as well as stylish.



GROUND FLOOR



1ST FLOOR



2ND FLOOR

Please note that elevation treatments and window/door positions may vary from plot to plot. Plot specific information will be confirmed on your reservation check list.

This information is for guidance only and does not form any part of any contract or constitute a warranty. Illustrations are of typical elevations and may vary. Floor plans are not drawn to scale and window positions may vary. Room dimensions are subject to a +/- 50mm (2") tolerance and are based on the maximum dimensions in each room. Please consult your sales advisor on site for specific elevations, room dimensions and external finishes. The EPC ratings are estimated and vary between home types, orientation and developments.

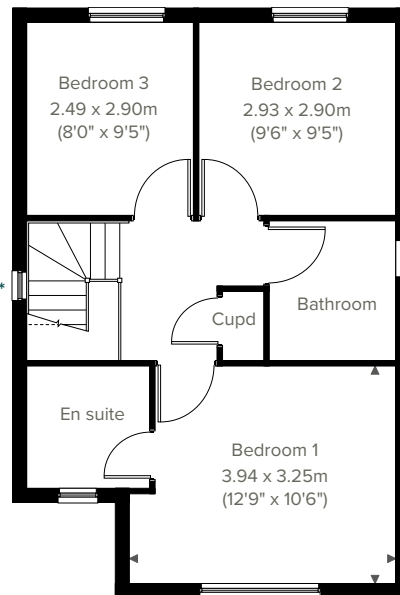
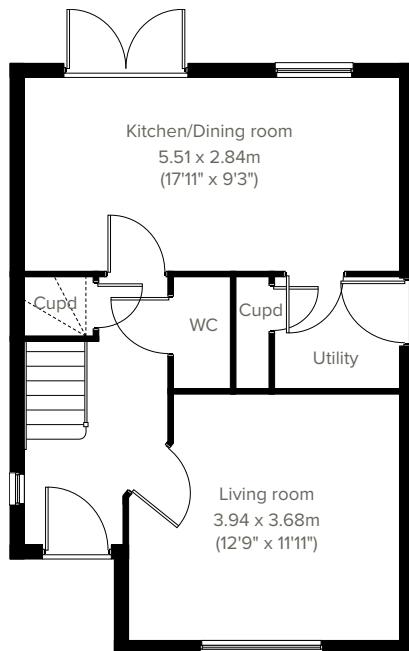


3 bedroom home

The Hatfield



Enjoy the best of modern living in this popular three-bedroom home which benefits from a stylish kitchen/dining room, downstairs WC and a spacious living room with French doors leading into the garden. Upstairs there are three good-sized bedrooms - one with an en suite, a family bathroom and a further storage cupboard.



* Landing window subject to planning on certain plots

GROUND FLOOR

1ST FLOOR

Please note that elevation treatments and window/door positions may vary from plot to plot. Plot specific information will be confirmed on your reservation check list.

This information is for guidance only and does not form any part of any contract or constitute a warranty. Illustrations are of typical elevations and may vary. Floor plans are not drawn to scale and window positions may vary. Room dimensions are subject to a +/- 50mm (2") tolerance and are based on the maximum dimensions in each room. Please consult your sales advisor on site for specific elevations, room dimensions and external finishes. The EPC ratings are estimated and vary between home types, orientation and developments.

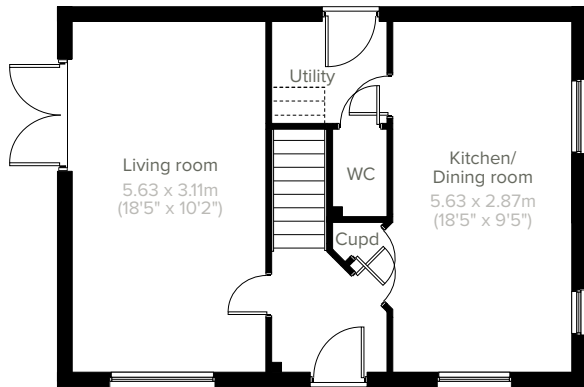


3 bedroom home

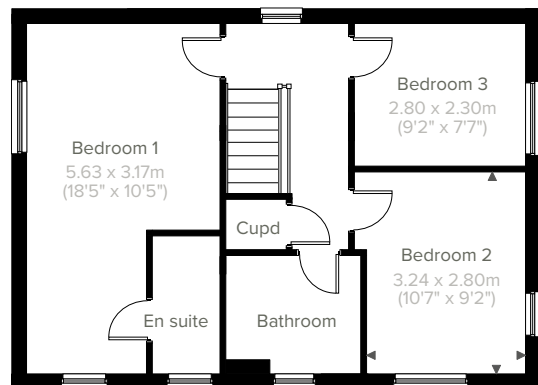
The Clayton Corner



A fantastic family home, the Clayton Corner features a stunning open plan kitchen/dining room and equally impressive living room with French doors opening into the garden. A utility room, WC and storage cupboard ensure it's practical as well as stylish. Upstairs you'll find three bedrooms, including a large bedroom one with en suite, a family-sized bathroom and another handy storage cupboard.



GROUND FLOOR



1ST FLOOR

Please note that elevation treatments and window/door positions may vary from plot to plot. Plot specific information will be confirmed on your reservation check list.

This information is for guidance only and does not form any part of any contract or constitute a warranty. Illustrations are of typical elevations and may vary. Floor plans are not drawn to scale and window positions may vary. Room dimensions are subject to a +/- 50mm (2") tolerance and are based on the maximum dimensions in each room. Please consult your sales advisor on site for specific elevations, room dimensions and external finishes. The EPC ratings are estimated and vary between home types, orientation and developments.

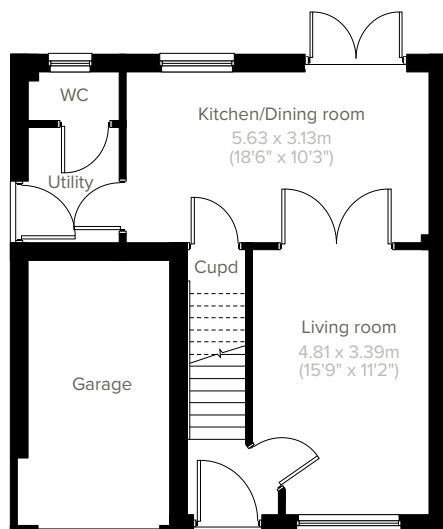


The Roseberry

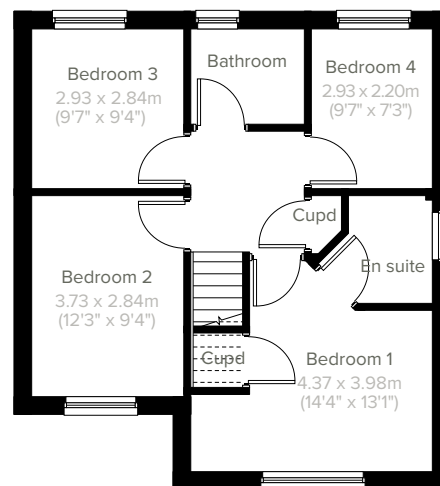
4 bedroom home



The Roseberry is a superb detached home with an integral garage, a good-sized living room with double doors leading into a bright open plan kitchen/dining room - perfect for family life and entertaining. It's practical too, with a utility, downstairs WC and three storage cupboards. The large bedroom one has an en suite with the spacious landing leading on to three further bedrooms and the main family bathroom.



GROUND FLOOR



1ST FLOOR

Please note that elevation treatments and window/door positions may vary from plot to plot. Plot specific information will be confirmed on your reservation check list.

This information is for guidance only and does not form any part of any contract or constitute a warranty. Illustrations are of typical elevations and may vary. Floor plans are not drawn to scale and window positions may vary. Room dimensions are subject to a +/- 50mm (2") tolerance and are based on the maximum dimensions in each room. Please consult your sales advisor on site for specific elevations, room dimensions and external finishes. The EPC ratings are estimated and vary between home types, orientation and developments.

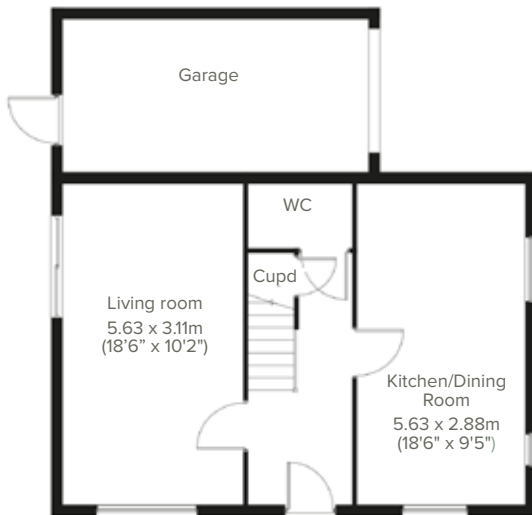


4 bedroom home

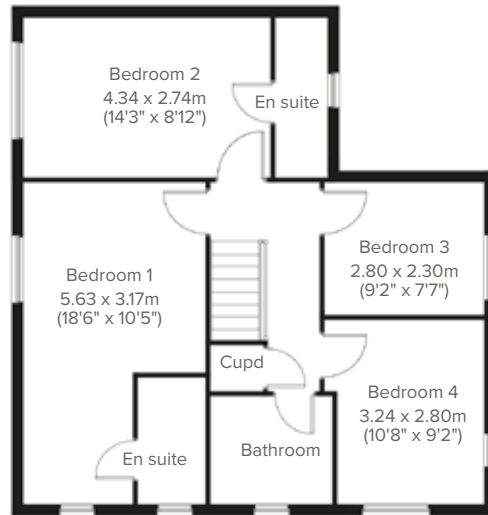
The Clandon Plus



A thoughtfully designed family home, the Clandon Plus features an open plan kitchen/dining room, living room, downstairs WC and garage with outside access. Upstairs bedrooms one and two benefit from en suites as well as two further bedrooms, a family bathroom and handy storage cupboard.



GROUND FLOOR



1ST FLOOR

Please note that elevation treatments and window/door positions may vary from plot to plot. Plot specific information will be confirmed on your reservation check list.

This information is for guidance only and does not form any part of any contract or constitute a warranty. Illustrations are of typical elevations and may vary. Floor plans are not drawn to scale and window positions may vary. Room dimensions are subject to a +/- 50mm (2") tolerance and are based on the maximum dimensions in each room. Please consult your sales advisor on site for specific elevations, room dimensions and external finishes. The EPC ratings are estimated and vary between home types, orientation and developments.

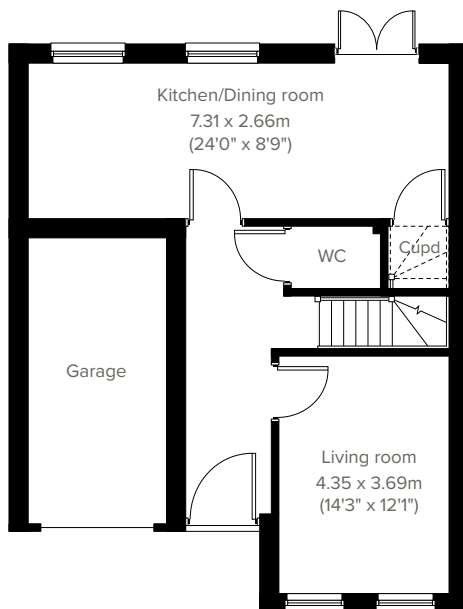


The Kendal

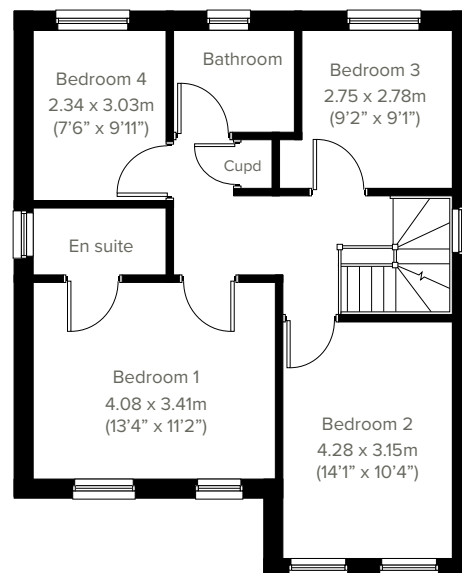
4 bedroom home



The Kendal is a contemporary four-bedroom detached home offering open plan living. The light and airy kitchen/dining room enjoys an open aspect through French doors to the rear garden. There's a bright front-aspect living room, a downstairs WC, storage cupboard and an integral garage. Upstairs there are four good-sized bedrooms with a spacious bedroom one benefiting from an en suite, plus a modern-fitted family bathroom and additional storage cupboard.



GROUND FLOOR



1ST FLOOR

Please note that elevation treatments and window/door positions may vary from plot to plot. Plot specific information will be confirmed on your reservation check list.

This information is for guidance only and does not form any part of any contract or constitute a warranty. Illustrations are of typical elevations and may vary. Floor plans are not drawn to scale and window positions may vary. Room dimensions are subject to a +/- 50mm (2") tolerance and are based on the maximum dimensions in each room. Please consult your sales advisor on site for specific elevations, room dimensions and external finishes. The EPC ratings are estimated and vary between home types, orientation and developments.

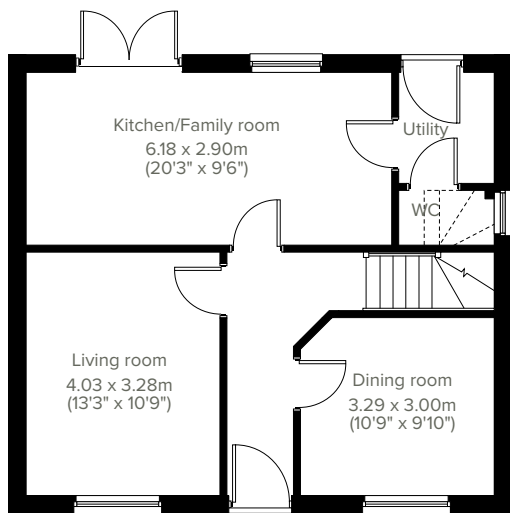


4 bedroom home

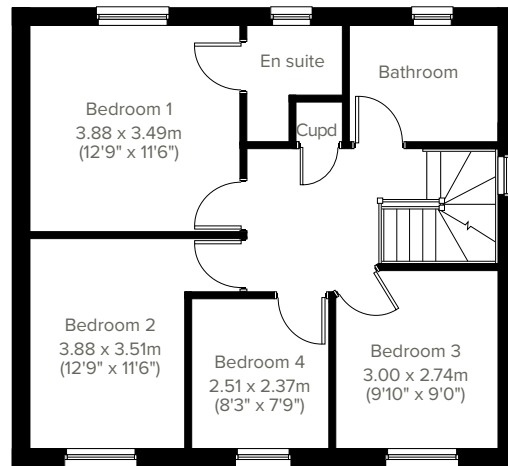
The Chedworth



A popular family home, the Chedworth ticks all the boxes. The modern and stylish open plan kitchen/ breakfast room is perfect for spending time as a family and entertaining. There's also a well-proportioned living room, separate dining room, downstairs WC and utility with outside access. Upstairs there are four bedrooms - bedroom one has an en suite - a large family-sized bathroom and two storage cupboards.



GROUND FLOOR



1ST FLOOR

Please note that elevation treatments and window/door positions may vary from plot to plot. Plot specific information will be confirmed on your reservation check list.

This information is for guidance only and does not form any part of any contract or constitute a warranty. Illustrations are of typical elevations and may vary. Floor plans are not drawn to scale and window positions may vary. Room dimensions are subject to a +/- 50mm (2") tolerance and are based on the maximum dimensions in each room. Please consult your sales advisor on site for specific elevations, room dimensions and external finishes. The EPC ratings are estimated and vary between home types, orientation and developments.

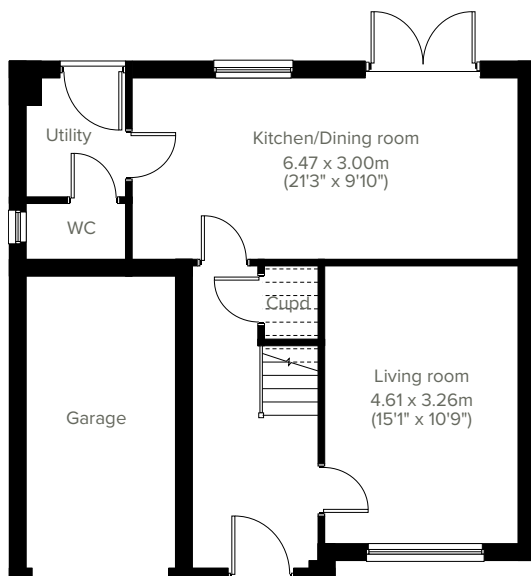


The Winster

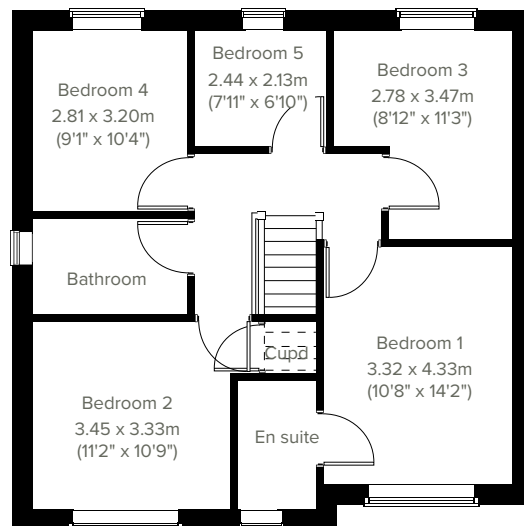
5 bedroom home



Ideal for family life, the Winster is a beautiful five-bedroom detached home. The open plan kitchen/dining room is spacious and bright with French doors leading onto the garden - perfect for gatherings with friends and family. It comes complete with a single integral garage, downstairs WC, utility, and en suite to bedroom one plus two handy storage cupboards.



GROUND FLOOR



1ST FLOOR

Please note that elevation treatments and window/door positions may vary from plot to plot. Plot specific information will be confirmed on your reservation check list.

This information is for guidance only and does not form any part of any contract or constitute a warranty. Illustrations are of typical elevations and may vary. Floor plans are not drawn to scale and window positions may vary. Room dimensions are subject to a +/- 50mm (2") tolerance and are based on the maximum dimensions in each room. Please consult your sales advisor on site for specific elevations, room dimensions and external finishes. The EPC ratings are estimated and vary between home types, orientation and developments.

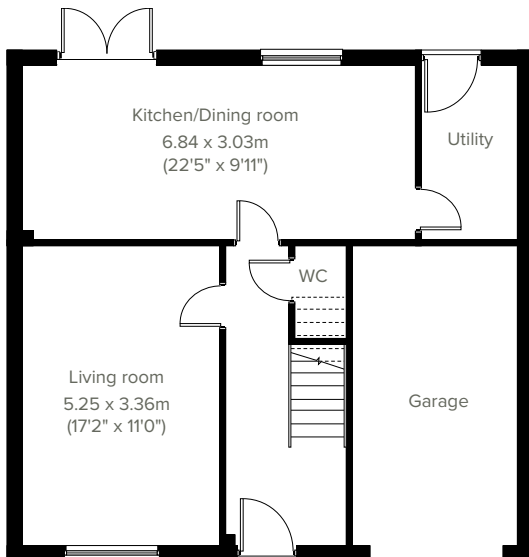


5 bedroom home

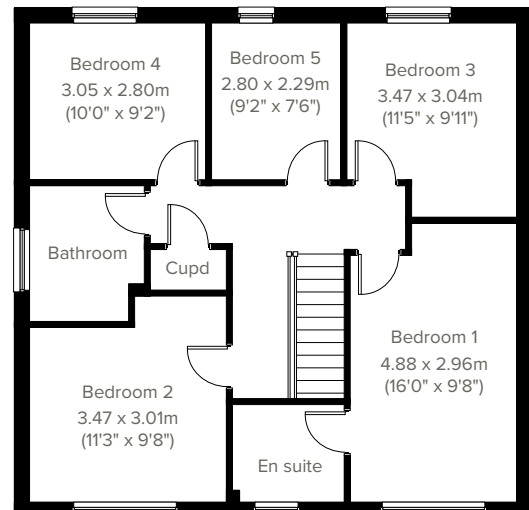
The Tiverton



Designed with families in mind, the Tiverton is a stunning five-bedroom detached home. The open plan kitchen/dining room is spacious and bright with French doors leading onto the garden - perfect for gatherings with friends and family. There's also a generous front-aspect living room, an integral garage, handy utility room with outside access, downstairs WC and en suite to bedroom one.



GROUND FLOOR



1ST FLOOR

Please note that elevation treatments and window/door positions may vary from plot to plot. Plot specific information will be confirmed on your reservation check list.

This information is for guidance only and does not form any part of any contract or constitute a warranty. Illustrations are of typical elevations and may vary. Floor plans are not drawn to scale and window positions may vary. Room dimensions are subject to a +/- 50mm (2") tolerance and are based on the maximum dimensions in each room. Please consult your sales advisor on site for specific elevations, room dimensions and external finishes. The EPC ratings are estimated and vary between home types, orientation and developments.

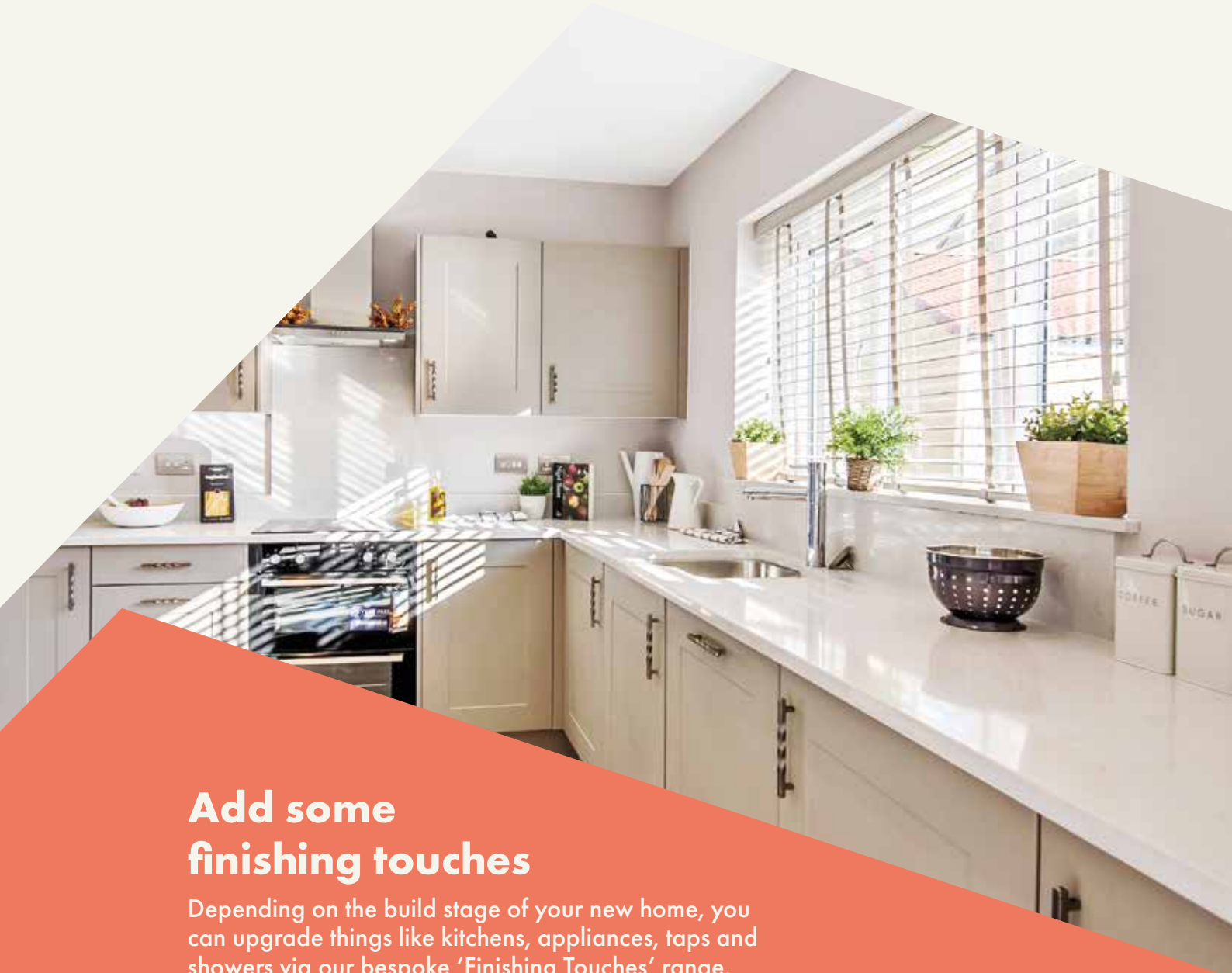




Summerhill Park

Specifications

Our homes include these items as standard to ensure you have everything you need to be comfortable from the day you move in. Built for today's modern lifestyles with sustainability in mind.



Add some finishing touches

Depending on the build stage of your new home, you can upgrade things like kitchens, appliances, taps and showers via our bespoke 'Finishing Touches' range.



External

Walls

Traditional cavity walls.
 Inner: timber frame or block.
 Outer: Style suited to planned architecture.

Roof

Tile or slate effect with PVCu rainwater goods.

Windows

Double glazed E-glass windows in PVCu frames.

Doors

GRP-skinned external doors with PVCu frames.
 French doors to garden or balcony
 (where applicable).

Electrics

External light to front.



Internal

Ceilings

Painted white.

Lighting

Pendant or batten fittings with low-energy bulbs.

Stairs

Staircase painted white.

Walls

Painted in white emulsion.

Doors

White pre-finished doors with white hinges.

Heating

Gas fired combi boiler with radiators in all main rooms, with thermostatically-controlled valves to bedrooms.

Insulation

Insulated loft and hatch to meet current building regulations.

Electrics

Individual circuit breakers to consumer unit and double electric sockets to all main rooms

General

Media plate incorporating TV and telecommunication outlets to living room.



Kitchen

General

Fully-fitted kitchen with a choice of doors and laminate worktop with upstands to match (depending on build stage) with soft closure to all doors and drawers.

Plumbing

Plumbing for washing machine.

Appliances

Single electric stainless steel oven, gas hob in stainless steel and integrated cooker hood and splash-back.



Bathroom

Suites

White bathroom suites with chrome-finished fittings.

Extractor fan

Extractor fan to bathroom and en suite (where applicable).

Shower

Mira showers with chrome fittings to en suite. Where there is no en suite, Mira thermostatic shower with wall mounted shower head, complete with shower screen.

Tiling

Half height tiling to sanitary-ware walls in bathroom and en suite (plot specific).

Splash-backs

1-course splash-back to cloakroom basin / 3-course splash-back to bath / fully tiled shower.

General

En suite to bedroom(s) where applicable.



Security

Locks

Three-point locking to front and rear doors, locks to all windows (except escape windows).

Fire

Smoke detectors wired to the mains with battery back-up.



Garage & Gardens

Garage

Garage (power and lighting supplied as standard) car ports or parking space.

Garden

Front lawn turfed or landscaped (where applicable).

Fencing

1.8 metre fence to rear garden, plus gate.





Energy efficiency built in

Sustainability

Our homes are typically 30% more efficient than traditional UK housing, helping you to save money and reduce your impact on the environment.

We're proud that we already build our homes to high levels of energy efficiency, but there's still a way to go. Our in-house sustainability team is dedicated to our mission to have net zero carbon homes in use by 2030, and for our own operations to be net zero carbon by 2040.

To achieve this, we're working to science-based carbon reduction targets in line with the Paris Agreement's 1.5°C warming pledge, investing in low-carbon solutions and technology that will further reduce the carbon footprints of our homes and out impact on the planet.

Energy efficiency built in:

- ✓ **EPC rating – B**
Our typical B rating makes our homes much more efficient than traditional D-rated homes.
- ✓ **Up to 400mm roof space insulation**
Warmer in winter, cooler in summer, reducing energy bills.
- ✓ **Argon gas filled double glazing**
Greater insulation and reduced heat loss.
- ✓ **Energy efficient lighting**
We use energy-saving LED lightbulbs in all our homes.
- ✓ **A-rated appliances**
Many of our kitchen appliances have a highly efficient A rating.
- ✓ **A-rated boilers**
Our condenser boilers far outperform non-condensing ones.
- ✓ **Local links**
We're located close to amenities and public transport to help reduce your travel footprint.
- ✓ **Ultra-fast broadband**
FibreNest fibre-to-the-home connectivity helps you live and work at home more flexibly.

Eco goodies

When you move in to your new Persimmon home you'll find some of our favourite eco brands in your Homemove box. These products are plastic free, refillable and ethically sourced.





Your home, your way

Finishing Touches to make it yours

Our goal is to make your house feel like your home before you've even collected the keys.

Key to achieving this is giving you the creative freedom to add your own style and personality to every room through our fabulous Finishing Touches collection.

Featuring the very latest designs from a host of leading brands, Finishing Touches lets you personalise your home inside and out. And rest assured, every upgrade and item available has been carefully chosen to complement the style

and finish of your new home. Of course, the real beauty is that all these extras will be ready for the day you move in.

Thanks to our impressive buying power we can offer almost any upgrade you can imagine at a highly competitive price. It can all be arranged from the comfort and convenience of one of our marketing suites, in a personal design appointment.

You can choose:



Kitchens



Appliances



Bathrooms



Flooring



Wardrobes



Fixtures & fittings

"One of the most exciting things about buying a brand new home is putting your own stamp on a blank canvas."



Share & win!

Share your love for your new Persimmon home and you could win a £100 Next voucher. There are three up for grabs every month. For inspiration, check out past winners' homes on our Instagram page @persimmon_homes

#lovemypersimmonhome

The earlier you reserve, the greater the choice

We'll always try and accommodate the Finishing Touches you want, but they are build-stage dependent, so the earlier you reserve the better.

persimmonhomes.com/finishingtouches

Finishing Touches are subject to availability and stage of construction. Prices for your specific home type will be in our price list. For a full list of Finishing Touches available for your home, please contact the sales advisor on site.



All about community

Proud to be building communities

When creating Summerhill Park, not only did we create a lovely local environment for you and your family, we also contributed to the wider community.

Throughout the development process, we proactively engage with local communities and work closely with planning authorities. Summerhill Park has achieved the right balance of homes and open space and the right mix of house types for a thriving community.

We also include much-needed homes for our Housing Association partners. Our plan enhances local facilities too, providing investment in local infrastructure such as transport, education, retail and recreation facilities, as well as initiatives to generate biodiversity.



“We’ve actively enhanced biodiversity at Summerhill Park .”

EDUCATION

Extension of Summerhill Primary School to a two form entry school.

HOUSING

Affordable and extra care housing provision.

NEW ROAD LINK

Improvement to Junction 1 of the M58 Motorway.

HEALTH

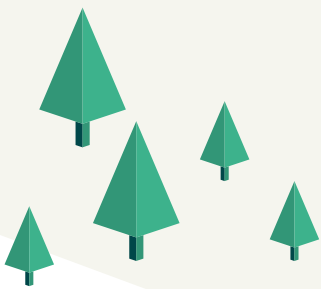
New health care facility in Maghull.

COMMUNITY SPACES

New main public park as well as other areas of public open space.

TRANSPORT

A new bus service through the site.





6 reasons why it pays to buy new

Did you know?

Most of the benefits of buying new are obvious, but some are not. Here's a quick summary of the key reasons why it's such a smart move:

1.

No chain

Few things are more annoying in the home buying process than a time-consuming chain you can't control. Buying new limits the chance of getting involved in one.

2.

Energy efficient

Our homes include cost-effective combi boilers, first-rate loft insulation and draught-free double glazed windows to meet stringent energy-efficient standards, keeping your energy bills as low as possible.

3.

Brand new

Absolutely everything in your new home is brand new. You get all the latest designs and tech, complete with manufacturers' warranties. Win-win.

4.

More ways to buy

We offer a range of schemes to help get you on the property ladder, including Home Change and Part Exchange. You may also be eligible to use the Government's Help to Buy scheme.

5.

10 year warranty

All our new homes come with a ten-year, insurance-backed warranty, as well as our own two-year Persimmon warranty. In the unlikely event you ever need to claim, our Customer Care Team are there to help you.

6.

Safe & secure

All our homes are built from fire-retardant materials and come with fitted smoke alarms and fire escape windows. They're also far more secure than older buildings thanks to the security locks and lighting we use.

[persimmonhomes.com](https://www.persimmonhomes.com)

Your home, better connected for a brighter future.







Great news! Summerhill Park benefits from access to ultrafast, full fibre-optic broadband.





Your home, better connected with FibreNest

- ▶ 100% full fibre-optic internet access installed directly into your new home
- ▶ You and your family can do more online at the same time, with less lag and hold-ups
- ▶ Enjoy lightning-fast speeds that won't be affected by the length of the line serving your property
- ▶ Full-fibre future-proofs your home, ensuring you'll always be able to access the latest in online services
- ▶ Stream 4k content, play online games and more on multiple devices all at the same time with less interruptions
- ▶ Work from home like you do in the office, thanks to our high-capacity, super reliable network
- ▶ Enjoy an exceptional level of customer support from our UK call centres

How our packages compare¹

 <h3>500Mb</h3> <p>Ultrafast Broadband</p> <p>Great for families with many devices, avid gamers and home workers.</p> <p>Up to 500Mb download Up to 50Mb upload</p>	 <h3>250Mb</h3> <p>Megafast Broadband</p> <p>Stream 4k Ultra-HD content, play online games and more.</p> <p>Up to 250Mb download Up to 25Mb upload</p>
 <h3>125Mb</h3> <p>Superfast Broadband</p> <p>Watch full HD TV whilst performing larger downloads.</p> <p>Up to 125Mb download Up to 10Mb upload</p>	 <h3>75Mb</h3> <p>Faster Broadband</p> <p>Browse the web intensively, play online games and watch catch-up TV.</p> <p>Up to 75Mb download Up to 10Mb upload</p>
 <h3>20Mb</h3> <p>Standard Broadband</p> <p>Browse, stream music and download larger files.</p> <p>Up to 20Mb download Up to 2Mb upload</p>	 <h3>10Mb</h3> <p>Budget Broadband</p> <p>Suitable for basic general web browsing.</p> <p>Up to 10Mb download Up to 1Mb upload</p>

Download type	500Mb	250Mb	125Mb	75Mb	20Mb	10Mb
 HD movie (12GB)	3m 15s	6m 30s	13m	23m	1h 20m	2h 40m
 Video game (40GB)	11m	21m 45s	43m 45s	1h 17m	4h 30m	9h

To have your new home connected, register now at fibrenewest.com/connect
 Questions? Just give our friendly team a call on **0333 234 2220**



Please see fibrenewest.com for up-to-date details on our packages and pricing.

No hidden costs. No price rises during the minimum term of your contract or automatic increases at the end.² Great service. Guaranteed.

¹Estimated download times are calculated at the maximum attainable speed and assumes that speed being available for the duration of the download. Speeds are delivered to your FibreNest Hub and may not be achieved when using a device that is incapable of communicating at that speed. Circular graphical illustrations represent proportional segments of time based on the longest and shortest download times displayed. ²FibreNest will not increase the price of your package during the minimum term of your contract unless required to by a change in law or regulatory obligations, for example, due to an increase in the rate of VAT. FibreNest does not plan automatic price increases to apply at the end of your minimum term; however, the basic price of our packages may vary over time and may take effect before you enter a subsequent minimum term with us.



Summerhill Park

Poverty Lane

Maghull

Liverpool

L31 3DS

T: 01513 057 193

E: summerhillpark.nwst@persimmonhomes.com

persimmonhomes.com/summerhill-park

Head Office

Persimmon Homes North West

Crofts Bank Road

Urmston

Manchester

M41 0UH

T: 0161 746 3737

E: nwst.sales@persimmonhomes.com

persimmonhomes.com



Issue: June 2022 Ref: 450-367

Persimmon plc, Registered office: Persimmon House, Fulford, York YO19 4FE Registered in England no: 1818486

Summerhill Park is a marketing name only. The copyright in this document and design is confidential to and the property of Persimmon Homes Developments 2022. These details are intended to give a general idea of the type of home but they do not form part of any specification or contract. The dimensions are approximate and may vary depending on internal finish. By the time you read this some of the details may have changed because of the Persimmon Homes policy of continually updating and improving design features. Therefore, please be sure to check the plan and specification in the sales office to keep you up-to-date with the latest improvements. The vendors of this property give notice that: (i) the particulars are produced in good faith, are set out as a general guide only and do not constitute any part of a contract; (ii) no person in the employment of Persimmon Homes or their authorised agents has any authority to make or give any representation or warranty whatever in relation to this property.