



# Fairfield House

*High Street, Stanhope, Bishop Auckland, DL13 2UR*

Freehold £1,300,000 | Ref: 6445180

## KEY HIGHLIGHTS



Luxury 5 Star Visit England self-catering country house



Very profitable business with excellent bookings



12 bedrooms sleeping up to 24 guests



Private and secluded circa 1.2 acre site



Tennis court, cinema room, games room, hot tub



Beautifully presented throughout



Close to the centre of vibrant & historic tourist led town




Surrounded by North Pennines National Landscape



Scope for further development of buildings

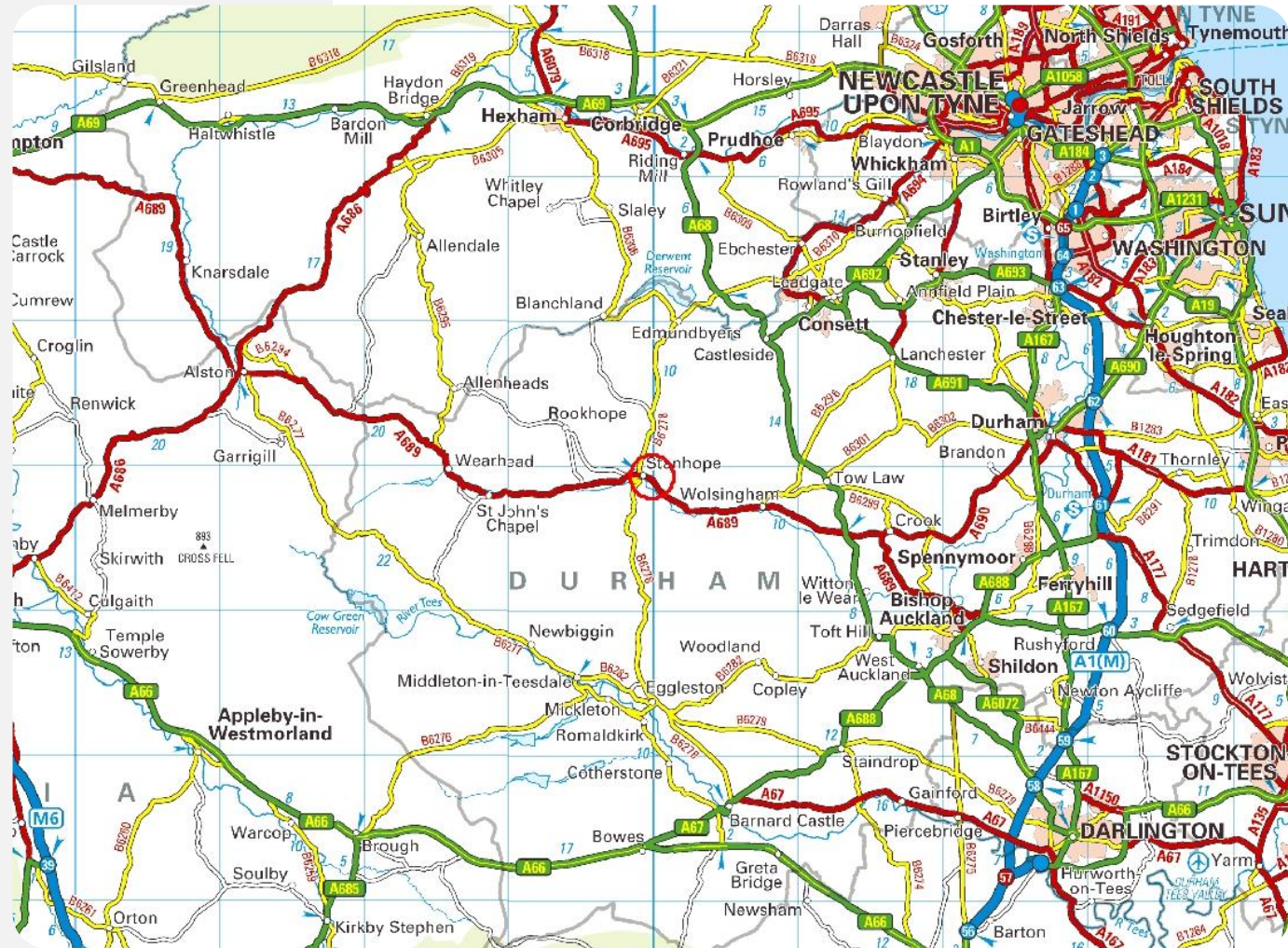


# LOCATION

 Stanhope, Bishop Auckland DL13 2UR

Fairfield House is set in a private and secluded circa 1.2 acre site which backs directly onto stunningly picturesque countryside but also is only a short stroll away from the very popular Weardale town of Stanhope in western County Durham.

Located near the equally charming towns of Frosterley and Wolsingham and at the crossroads of the A689 and B2678, Stanhope has much to attract visitors, with its quaint shops, cafes and pubs and even its own castle and it is surrounded by the dramatic landscape of rolling hills and heather moorland which is the North Pennines National Landscape.





## THE HOUSE

Fairfield House is a beautiful and very imposing period property with an array of charming character features combined with contemporary luxuries and refinements. It boasts very spacious accommodation across three floors including eight superb and spacious bedrooms, five of which have en-suite facilities, one has its own private shower room, whilst the two attic bedrooms rooms share a bathroom. There are two very striking lounges, each with lovely garden views, a formal dining room ideal for catering for large groups and a magnificent kitchen with central island and granite/marbled worktops. Completing the accommodation is a very useful utility/boot room.

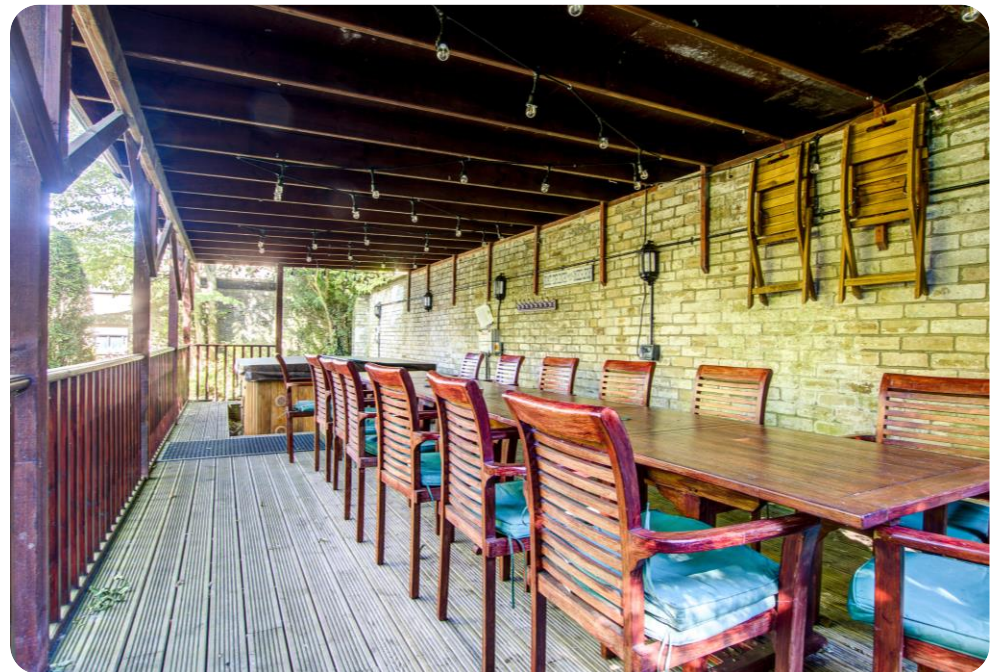
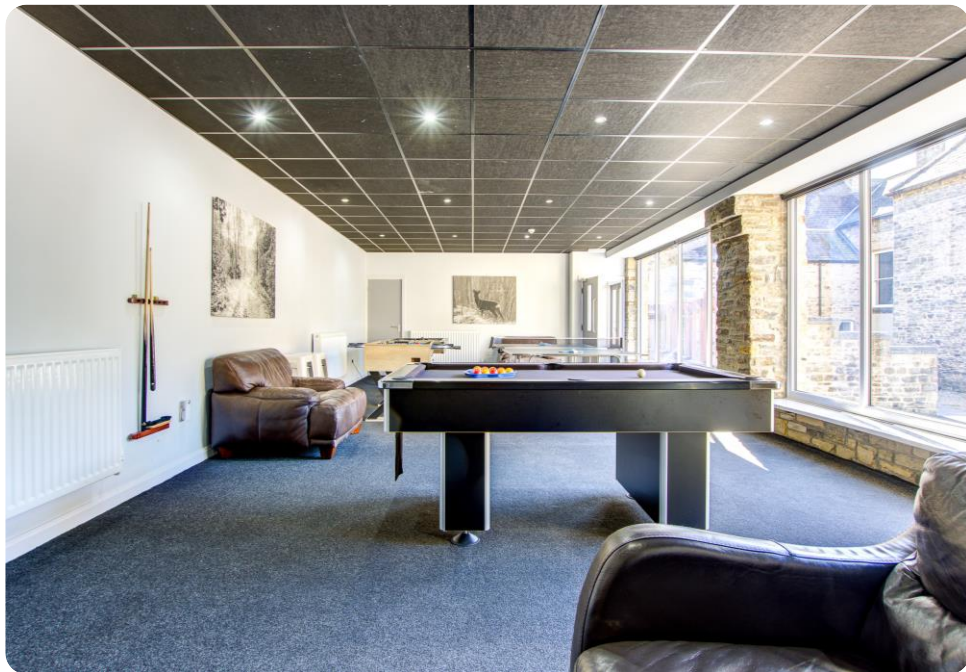






## THE ANNEX

Offering significant additional accommodation and situated at the rear of Fairfield House, is the annex which provides two huge bedrooms, each with luxurious en-suites, a cinema room and also a games room with pool table, table tennis, games console and table football. Also, in the annexe are two very large store-rooms, one of which is double height, and it is felt this provides great scope to further develop the accommodation with the addition of several further bedrooms or self-contained holiday cottage.









## ADDITIONAL BEDROOMS (ANNEX 2)

Completed in the last few years is the second annex, a lovely and well-presented block of two self-contained studio apartments, each with bedroom and kitchenette area and, of course, en-suite shower rooms.





## EXTERNAL DETAILS

The gardens enjoy a huge degree of privacy, being secluded and unoverlooked. The circa 1.2 acre plot included a recently tarmacked drive with parking for up to a dozen vehicles including outdoor sockets where guests can charge their cars, a large flat lawn to the front of the house, ideal for sports and activities and a private patio terrace and tennis court to the side. At the rear there is a covered deck with large 16-seater dining table, barbeque area and hot tub, all adding further appeal for guests and visitors.





## THE OPPORTUNITY

Our seller client operates Fairfield House as a luxury 5-star self-catering country house with private hire/exclusive use for parties, gatherings, wedding and birthday celebrations, business meetings, team building events and of course, for holidays and staycations. Guests invariably stay multiple nights, usually across long weekends and usually only one stay per week. Housekeeping change-over is carried out by a local team used almost exclusively by our client.

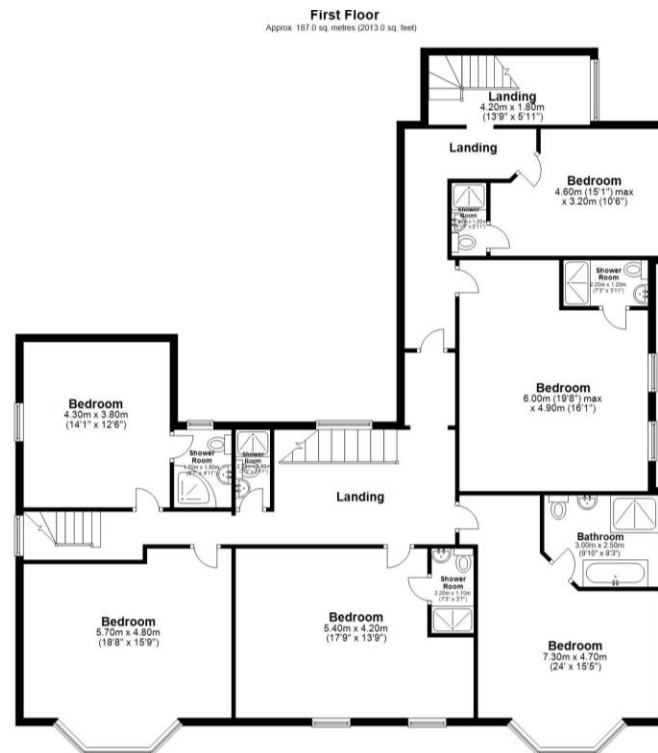
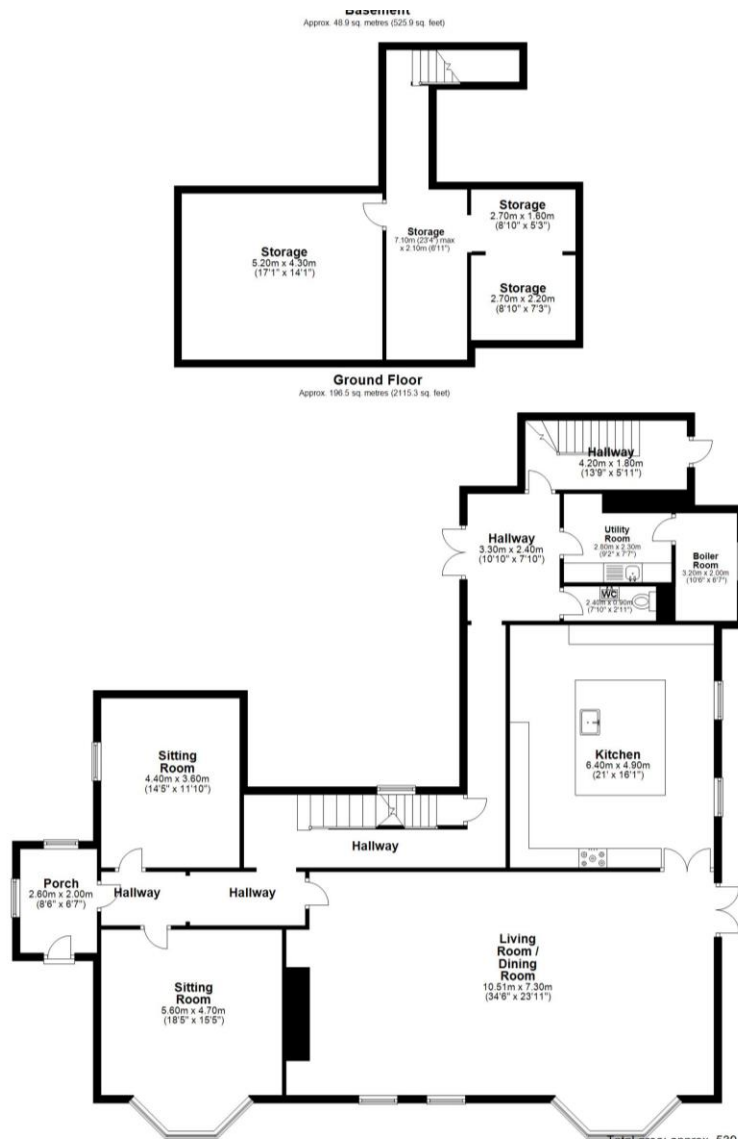
Fairfield House is an award-winning business, having won the 2022 Rose Award from Visit England.

## TRADING INFORMATION

The last three years trade accounts are available on request however, as a guide, turnover to the end of January 2024 shows £166,000 and an adjusted net profit of £76,000 net of all operational costs.



# FLOOR PLAN - FAIRFIELD HOUSE



Total area: approx. 539.3 sq. metres (5805.4 sq. feet)

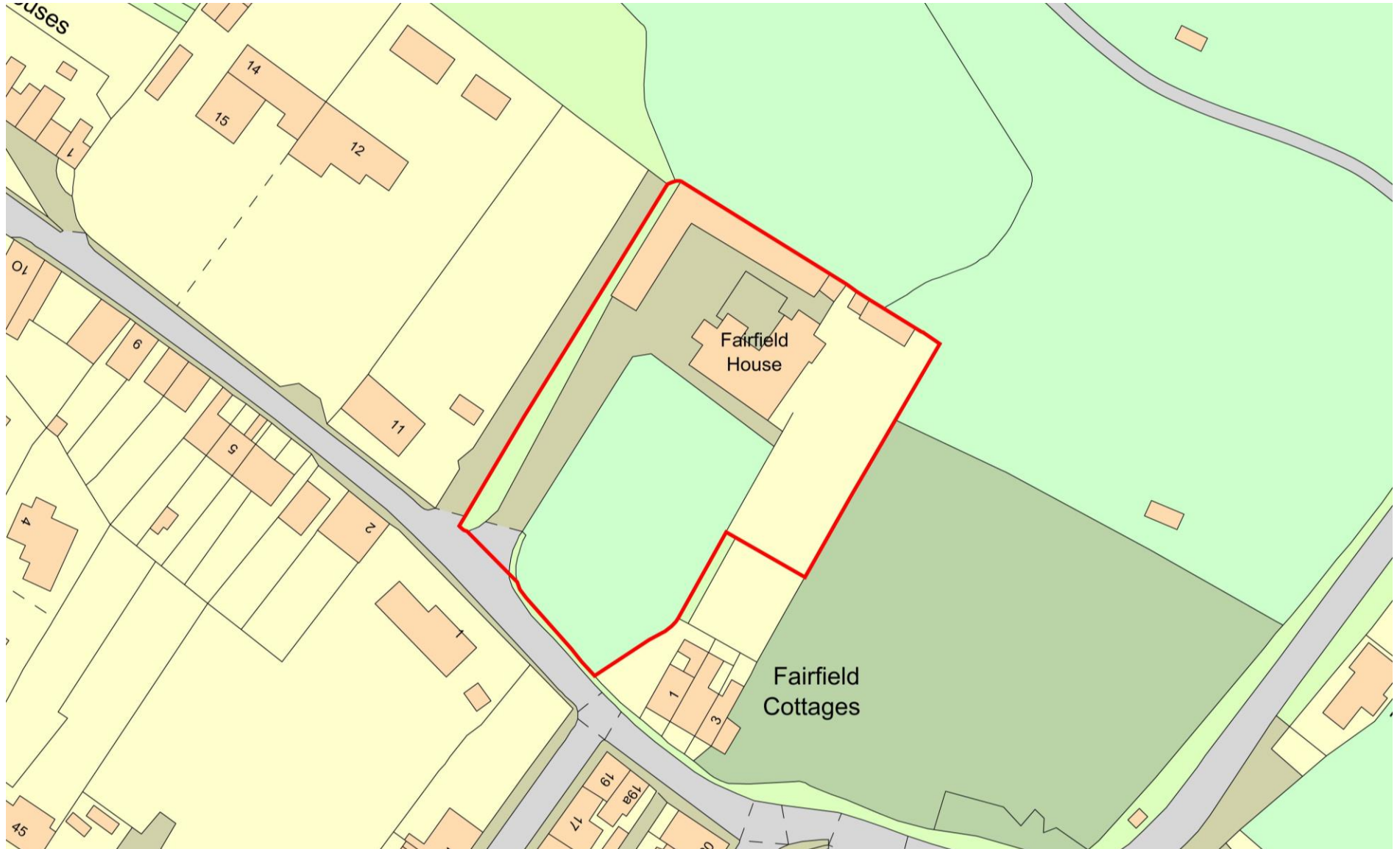
SKETCH PLAN FOR ILLUSTRATIVE PURPOSES ONLY All measurements walls, doors, windows, fittings and Appliances, sizes and locations, are approximate only. They cannot be regarded as a representation by the seller, nor their agent PRODUCED BY TIFFBOX



# FLOOR PLAN - FAIRFIELD HOUSE ANNEX



# SITE PLAN



# CONTACTS

No direct approach may be made to the business. For an appointment to view, or for further information, please contact



**Mark Worley**

Director – Hotels

M: +44 (0) 7791 980 852

E [mark.worley@christie.com](mailto:mark.worley@christie.com)

#### CONDITIONS OF Christie & Co

These sales particulars are prepared as a general guide to the property (which expression includes business and trade content, if any, included in the sale) for the convenience of a prospective purchaser (an "acquirer") and are intended for business people familiar with commercial transactions. If you are not sure that you fit this description you should take relevant independent advice before proceeding further. Christie & Co for themselves and for the vendors, whose agents Christie & Co are, give notice that: (a) These particulars are made without responsibility on the part of Christie & Co or the Client; they do not obviate the need to make appropriate searches, enquiries and inspections, nor do they constitute any part of an offer or contract, and statements herein are not to be relied upon as statements or representations of fact; any acquirer must satisfy himself, by inspection or otherwise, as to their correctness and any error, omission or misdescription therein shall not affect or annul the sale or be grounds for rescission or compensation; (b) The Client does not make or give, and neither Christie & Co nor any of their employees has any authority to make or give, any representation or warranty whatsoever in relation to the properties; (c) Christie & Co has not carried out a detailed survey, nor tested the services, appliances and specific fittings; (d) Dimensions (where given) are approximate and should be verified by an acquirer; and (e) Any accounts or financial statements or registration information provided to an acquirer are provided on behalf of the Client by Christie & Co, who cannot therefore offer any guarantee of their completeness or accuracy, and accordingly shall not be liable for any loss, damage, cost, expenses or other claims for compensation arising from inaccuracies or omissions therein. These details were believed to be correct at the date of publication but their accuracy is not guaranteed. Subject to contract. Copyright Reserved Christie & Co (2024).

#### CUSTOMER DUE DILIGENCE CHECKS

The Money Laundering, Terrorist Financing and Transfer of Funds (Information on the Payer) Regulations 2017 (as amended) require us to conduct due diligence checks upon all purchasers. When an offer has been accepted, the prospective purchaser(s) will need to provide, as a minimum, proof of identity and residential address; if the purchaser is a company or other legal entity, then any person owning more than 25% must provide the same.

