

Bertie's of Otterburn

Luxury Bed & Breakfast

The Old Post Office, Otterburn, Northumberland, NE19 1NP

Asking Price £450,000



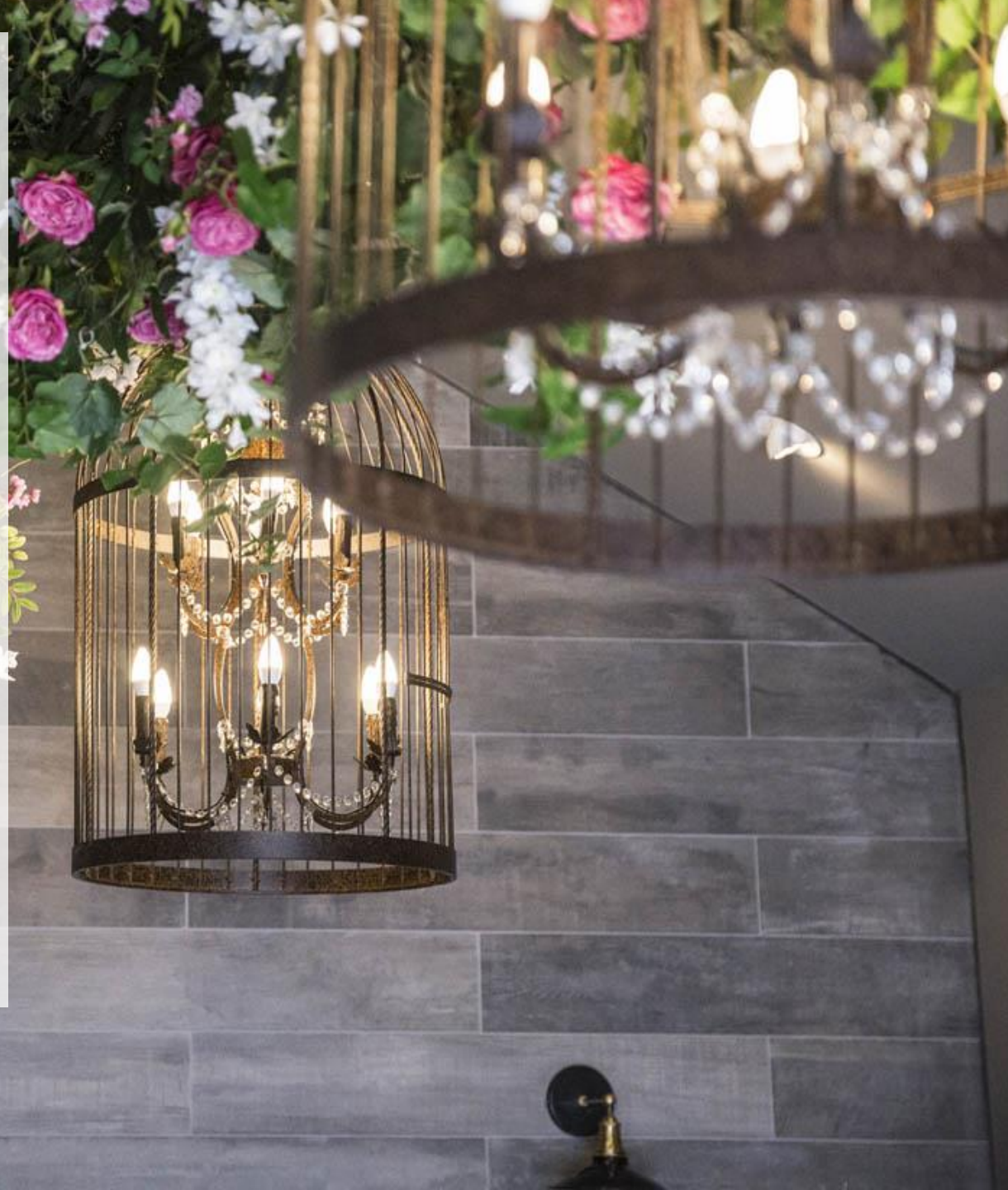
6445146
christie.com

 **CHRISTIE & CO**

KEY INVESTMENT HIGHLIGHTS

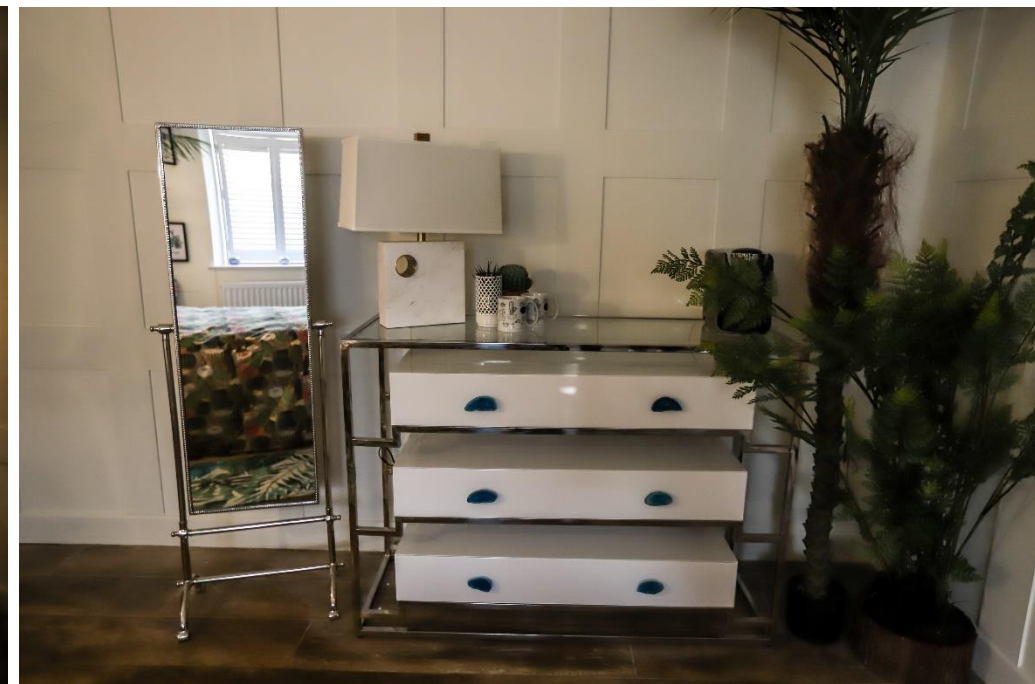
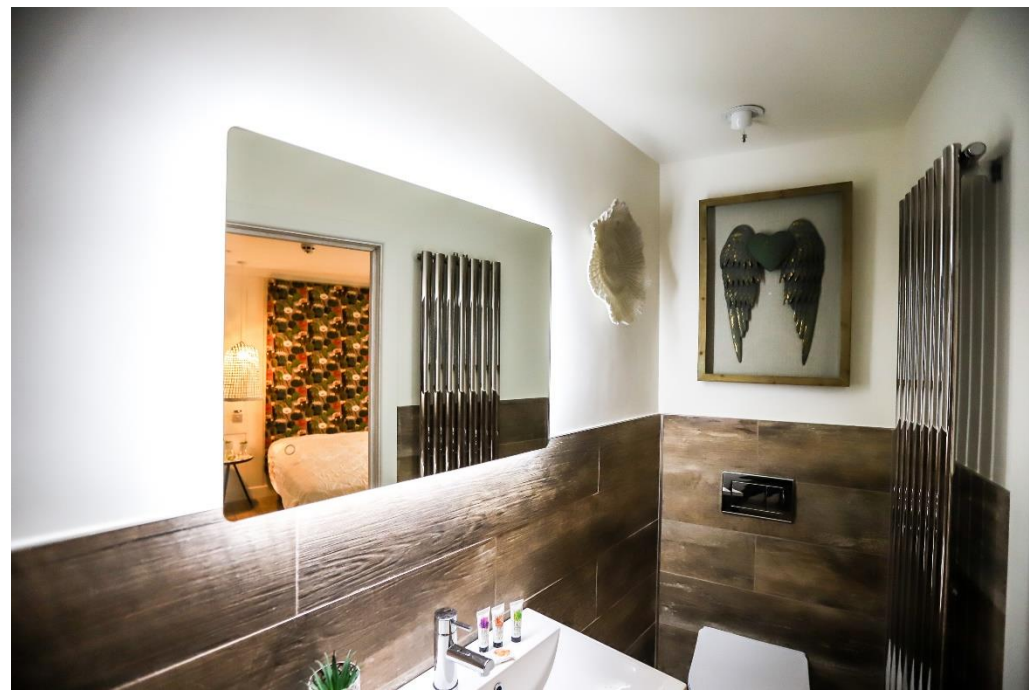
- Six bespoke and individually designed suites
- Hand selected furnishings and décor
- Superb standards of presentation throughout
- On site parking and complimentary WiFi
- Breakfast room and kitchen
- Main road location in the village of Otterburn
- Edge of Northumberland National Park
- Close to two major wedding venues
- Trading accounts are available on request. Energy Rating E

Rooms include 40" flat screen TV, radio alarm clock, bottled water, tea & coffee making facilities, eco friendly toiletries, anti allergy pillows and 100% cotton linen Bertie's bathrobes.



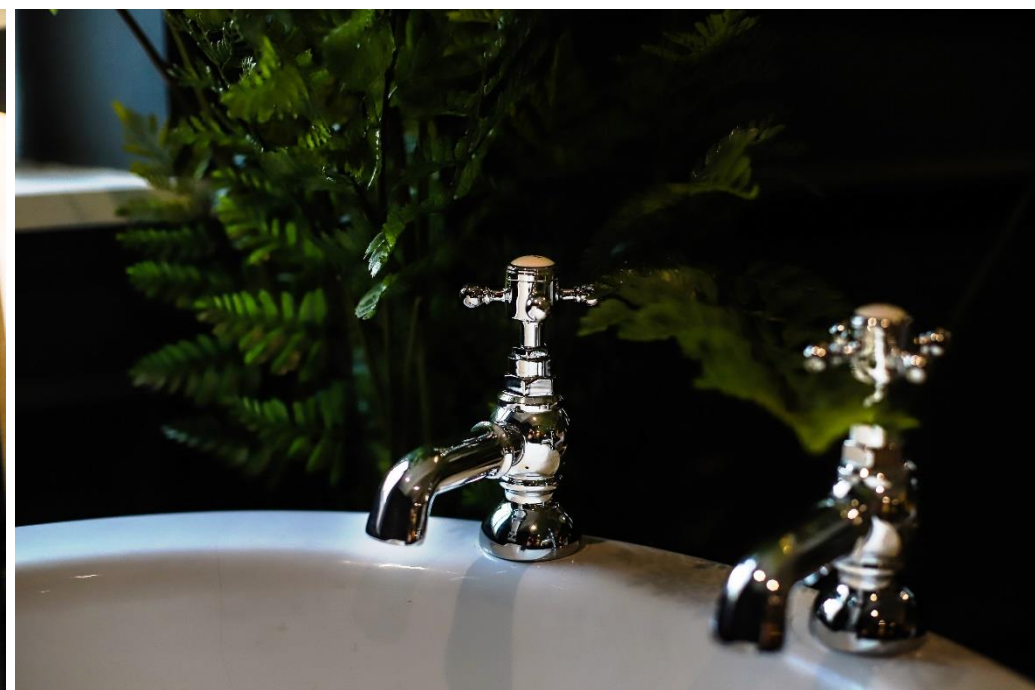
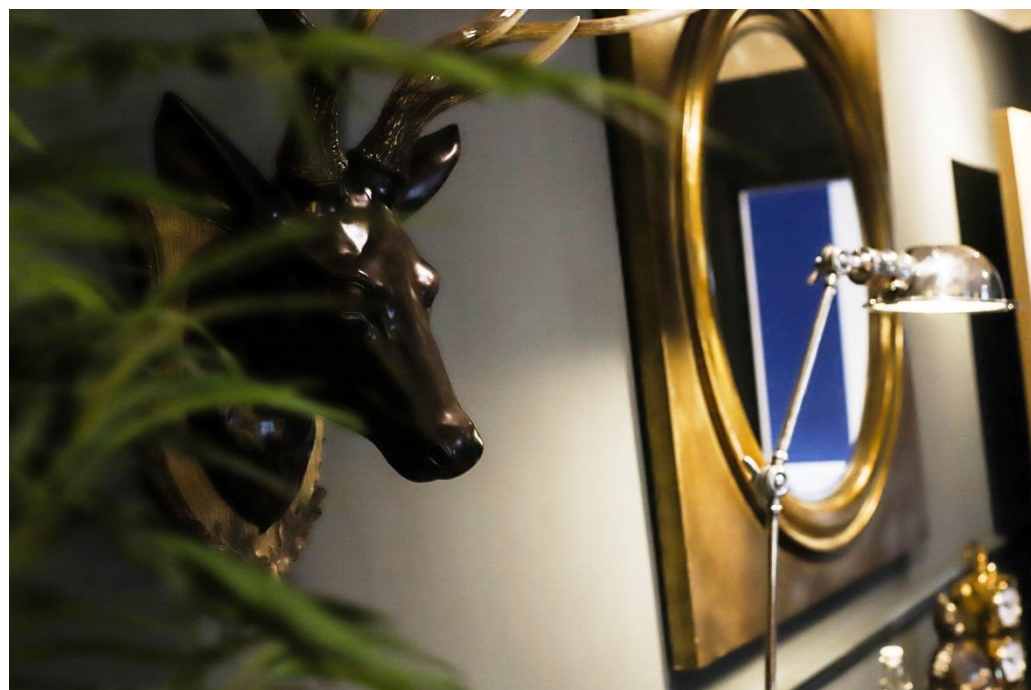
THE PRICKLY PEAR

This striking ground floor suite is themed around the North American desert with plantation shutters, wood panelled walls and superb en suite with walk in shower.



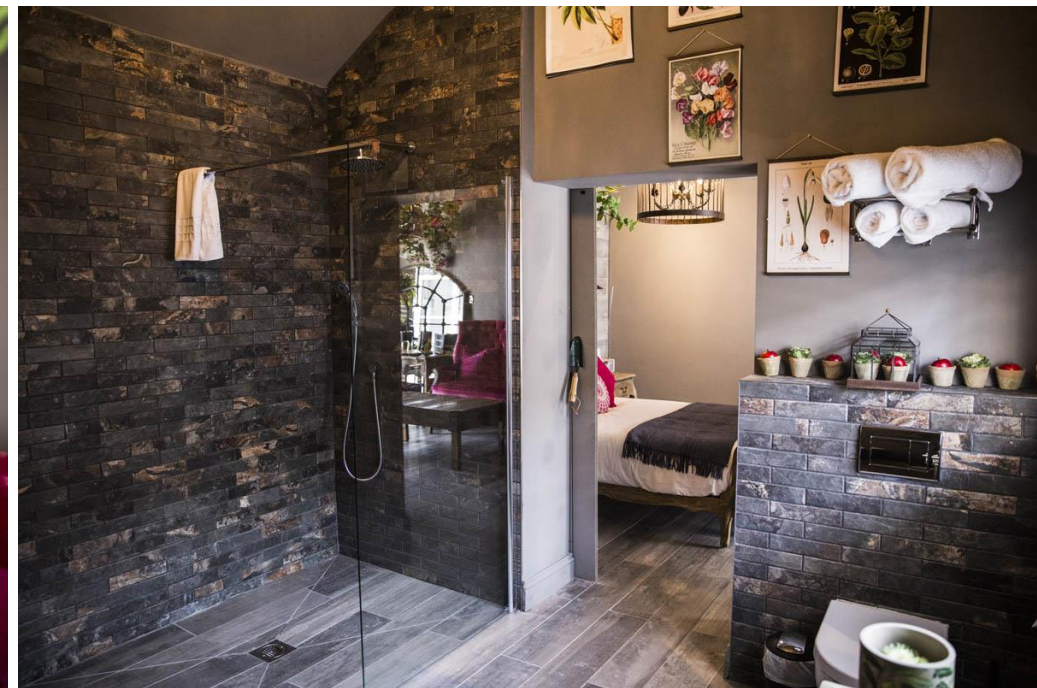
THE W ROOM

The W Room is located on the ground floor and perfectly combines classic features with quirky designs boasting a show-stopping bedroom bath as well as a full en-suite wet room.



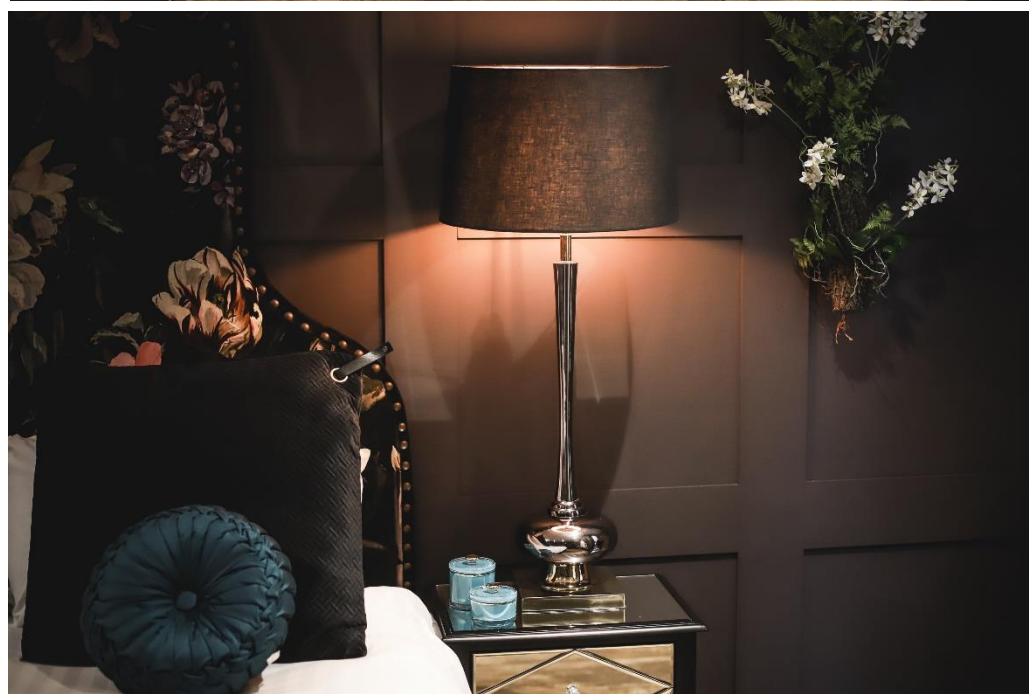
THE POTTING SHED

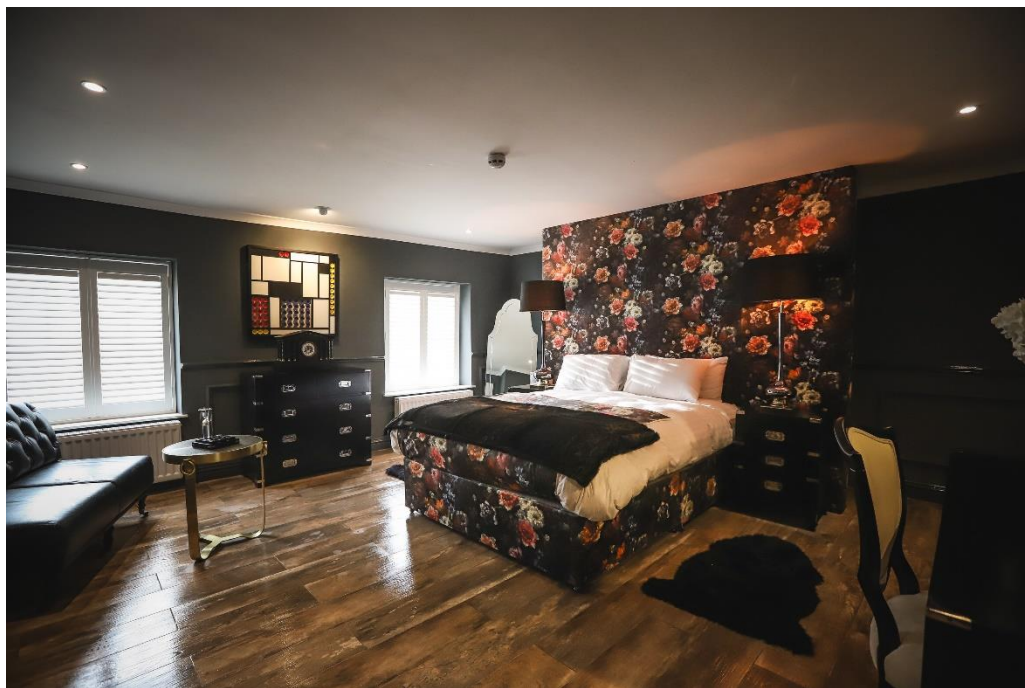
This outstanding suite is detached from the main building with its own entrance, adding an air of privacy and seclusion. Dating back to the 18th century, this room was the former sorting office of the village post office and comprises a large bedroom with king size bed and very spacious en suite bathroom with freestanding claw foot bath.



THE MIDNIGHT GARDEN

The Midnight Garden on the first floor, boasts views of the historic Otterburn Castle, which neighbours Bertie's, and features a superb en suite with walk in shower cubicle, twin vanity basins and Carrera marbled walls.





THE FLOWER SHOP

Located on the first floor this is a lovely suite with fireplace, plantation shutters, bold floral décor and a superb en suite with walk in double shower and twin rail fall showers. The feature of this room is the wonderful free standing bath.



THE AVIARY

This first floor suite is inspired by John Audubon, an 18th century American ornithologist, naturalist, and painter and comprises a wood panelled bedroom with excellent en suite including a walk in shower cubicle with rain fall shower.



CONTACT DETAILS

Mark Worley

Director - Hotels

Mobile: +44 7791 980 852

Email: mark.worley@christie.com



CONDITIONS OF THESE PARTICULARS

These sales particulars are prepared as a general guide to the property (which expression includes business and trade content, if any, included in the sale) for the convenience of a prospective purchaser or tenant (an "acquirer") and are intended for business people familiar with commercial transactions. If you are not sure that you fit this description you should take relevant independent advice before proceeding further. Christie & Co for themselves and for the vendors, owners or landlords of the property (together the "Client") whose agents Christie & Co are, give notice that: (a) These particulars are made without responsibility on the part of Christie & Co or the Client; they do not obviate the need to make appropriate searches, enquiries and inspections, nor do they constitute any part of an offer or contract, and statements herein are not to be relied upon as statements or representations of fact; any acquirer must satisfy himself, by inspection or otherwise, as to their correctness and any error, omission or mis-description therein shall not affect or annul the sale or be grounds for rescission or compensation; (b) The Client does not make or give, and neither Christie & Co, nor any of their employees has any authority to make or give, any representation or warranty whatsoever in relation to the property; (c) Christie & Co have not carried out a detailed survey, nor tested the services, appliances and specific fittings; (d) Dimensions (where given) are approximate and should be verified by an acquirer; and (e) Any accounts or financial statements or registration information provided to an acquirer are provided on behalf of the Client by Christie & Co, who cannot therefore offer any guarantee of their completeness or accuracy, and accordingly shall not be liable for any loss, damage, cost, expenses or other claims for compensation arising from inaccuracies or omissions therein. These details were believed to be correct at the date of publication but their accuracy is not guaranteed. Subject to contract. Copyright reserved Christie & Co. September 2020