

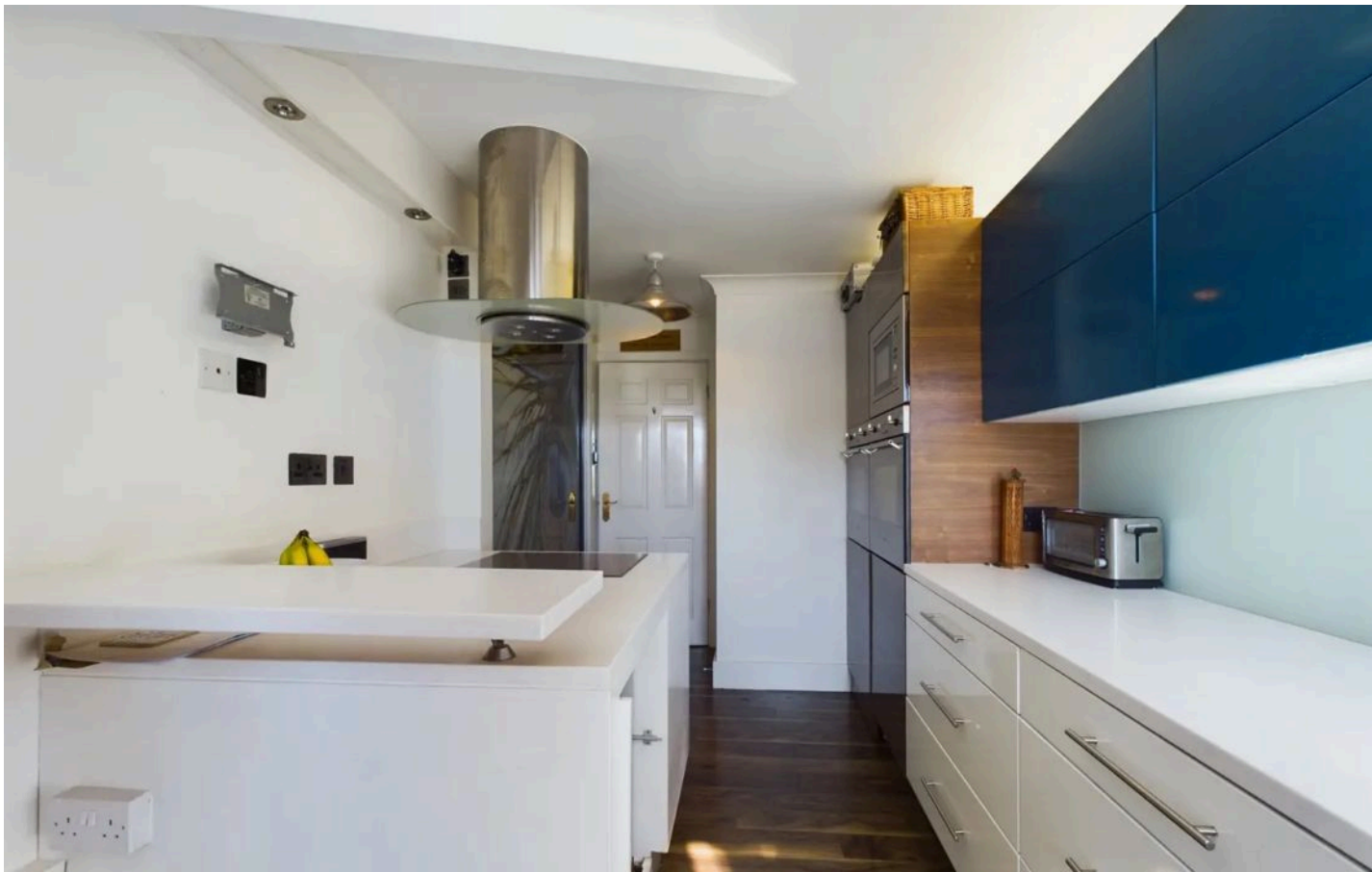


## 5 Stukeley Park Chestnut Grove, Great Stukeley

In Excess of £210,000

 **Oliver James**  
Property Sales & Lettings





## 5 Stukeley Park Chestnut Grove

Great Stukeley, Huntingdon

An elegant top floor apartment with beautifully presented accommodation, allocated parking and panoramic countryside views. No chain.

Council Tax band: B

Tenure: Leasehold

- Top floor apartment in a prestigious development.
- Two double bedrooms.
- The Gross Internal Floor Area is approximately 721 sq.ft. / 67 sq.metres.
- Beautifully modern kitchen with integrated appliances.
- Allocated parking space.
- External brick built storage shed.
- Lovely well manicured communal grounds.
- Spacious living room with bespoke storage and TV cabinet.
- Amazing countryside views yet just 5 minutes drive to Huntingdon and the Train Station.
- EPC: C.











