



14 Ermine Court Ermine Street, Huntingdon
£125,000

 **Oliver James**
Property Sales & Lettings



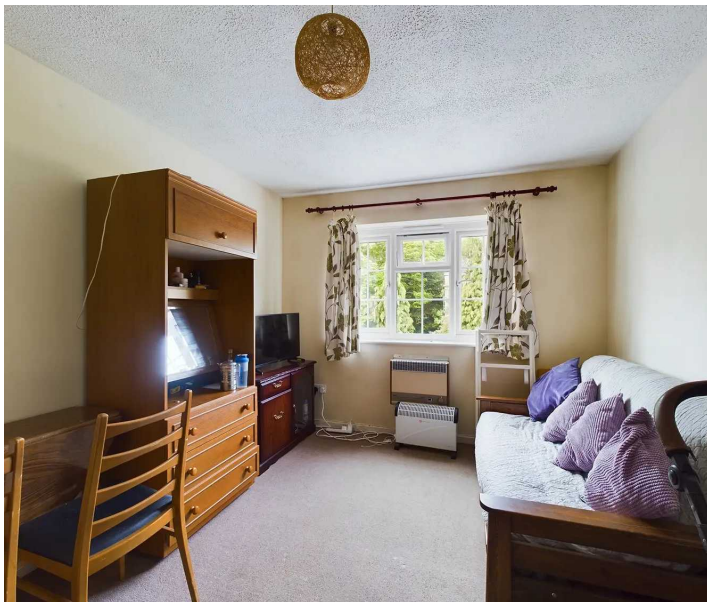
14 Ermine Court Ermine Street Huntingdon, Huntingdon

A town centre apartment situated in a popular development with allocated parking. The property is sold with no forward chain.

Council Tax band: A

Tenure: Leasehold

- First floor apartment.
- One double bedroom.
- The Gross Internal Floor Area is approximately 341 sq/ft / 31 sq/metres.
- Town centre location.
- Five minute walk to Huntingdon Train Station.
- The Property is offered with no forward chain.
- Pleasant communal gardens and parking area.
- Quick access out of Huntingdon onto the A14 / A1 road network.
- Allocated parking space and additional visitor spaces available.
- EPC: D.





INTRODUCTION

A first floor one bedroom apartment, situated in this popular development close to the town centre and within walking distance of the train station. The property offers well proportioned living accommodation set within a pleasant development with designated off road parking and additional visitor parking as well.

LOCATION

Situated in a prominent position within central Huntingdon, Ermine Street is located on the Northern outskirts of Town providing easy and quick access onto the major road networks giving access in all directions. Schools catering for all age groups, both private and public can be found within a 20 mile radius. Huntingdon itself benefits from a variety of independent shops, larger supermarkets and retail outlets. Within walking distance, Huntingdon Train Station provides access to London Kings Cross in under an hour, as well as the guided bus into central Cambridge.

