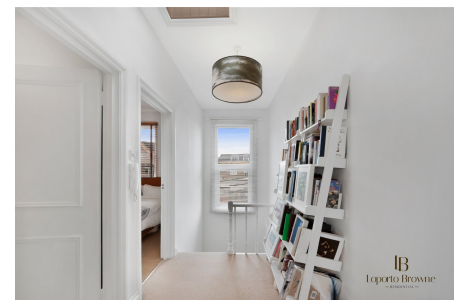


Felixstowe Road, NW10

Fixed Price £375,000

 1  1  1



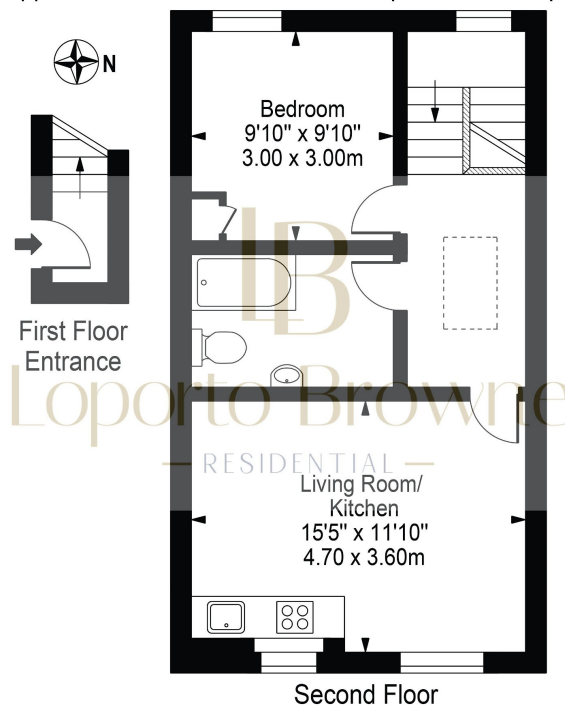
This charming 1-bedroom top-floor flat, nestled within the vibrant Kensal Triangle neighbourhood delightfully boasts a superb location, just a leisurely 5-minute stroll from Kensal Green Station, which offers convenient access to both the Bakerloo Line and Overground services, making your daily commute a breeze.

Tall ceilings and expansive windows throughout the entire flat creates a warm and welcoming feeling as you enter the property, making it a perfect space to unwind after a long days work.

Key Features

- Highly desirable 1 bed flat
- Tall Ceilings
- Flooded with natural light
- Ample Storage
- Suitable for first time buyers
- Perfect fit for a pied-a-terre
- Great BTL investment
- Located near Kensal Green Station
-
-

Felixstowe Road
Approx. Gross Internal Area 474 Sq Ft - 44.00 Sq M



For Illustration Purposes Only - Not To Scale

This floor plan should be used as a general outline for guidance only and does not constitute in whole or in part an offer or contract. Any intending purchaser or lessee should satisfy themselves by inspection, searches, enquiries and full survey as to the correctness of each statement. Any areas, measurements or distances quoted are approximate and should not be used to value a property or be the basis of any sale or let.