


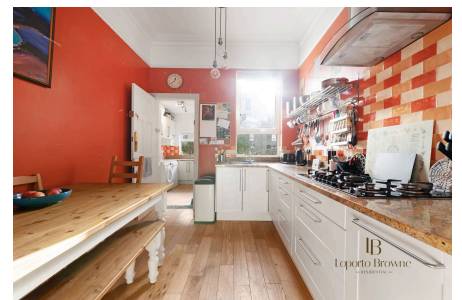


Prout Grove, NW10

Guide Price £800,000

 3  2  2

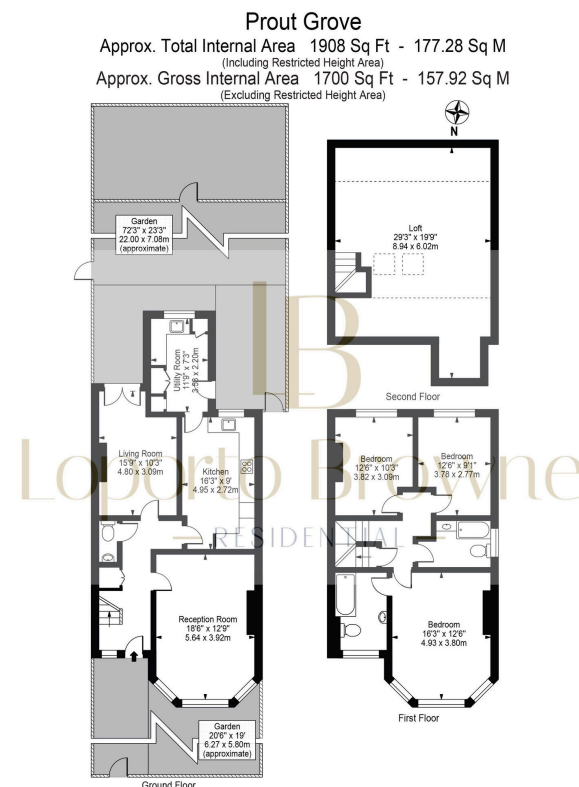


Guide Price: £800,000 - £900,000

Prout Grove is a beautifully presented three-bedroom, two-bathroom Edwardian family home with a separate guest WC, full of period charm and character. The property features a bright lounge, a dining room opening onto a mature south-facing garden, a well-equipped kitchen, and a utility room with side access. A partially converted loft with planning permission offers the potential to create a luxurious top-floor bedroom or additional living space. Set in a sought-after NW10 location near Neasden station, local shops, and Gladstone Park, this home combines space, style, and potential in one exceptional package.

Key Features

- Guide Price: £800,000 - £900,000
- Three bedrooms, two bathrooms, plus a separate guest WC
- Dining room with built-in storage and French doors opening onto the garden
- Utility room with side access and space for appliances
- South-facing rear garden approximately 72 feet long, mature with lawn and gazebo
- Semi-detached Edwardian family home full of period character
- Bright lounge with oak flooring, ceiling cornices, and feature fireplace
- Well-appointed kitchen with modern appliances and elegant worktops
- Partially converted loft with planning permission for a luxurious top-floor bedroom or additional living space
- Excellent location near Neasden station, local shops, bus routes, and Gladstone Park



For Illustration Purposes Only - Not To Scale

This floor plan should be used as a general outline for guidance only and does not constitute in whole or in part an offer or contract.
 Any intending purchaser or lessee should satisfy themselves by inspection, searches, enquiries and full survey as to the correctness of each statement.
 Any areas, measurements or distances quoted are approximate and should not be used to value a property or be the basis of any sale or let.