



Loporto Browne
— RESIDENTIAL —

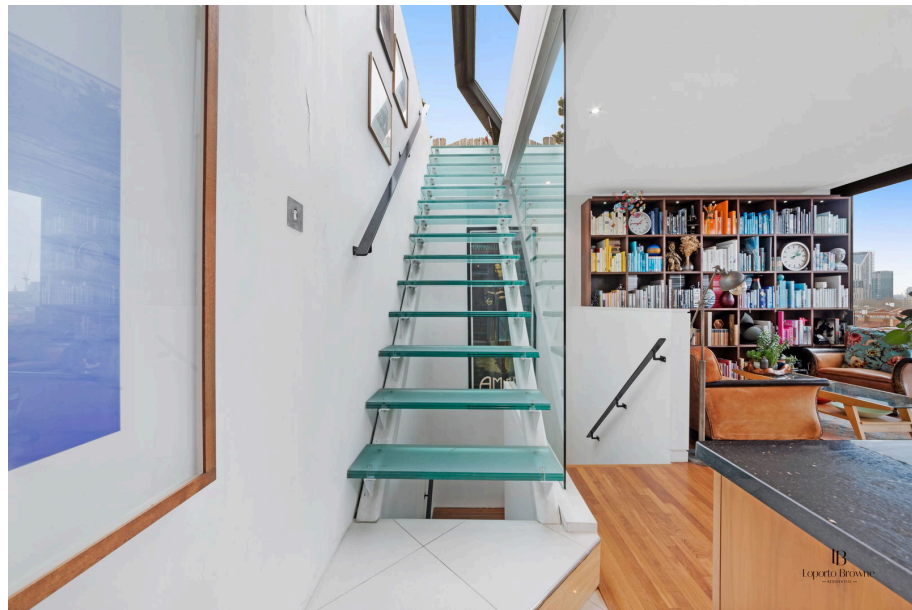
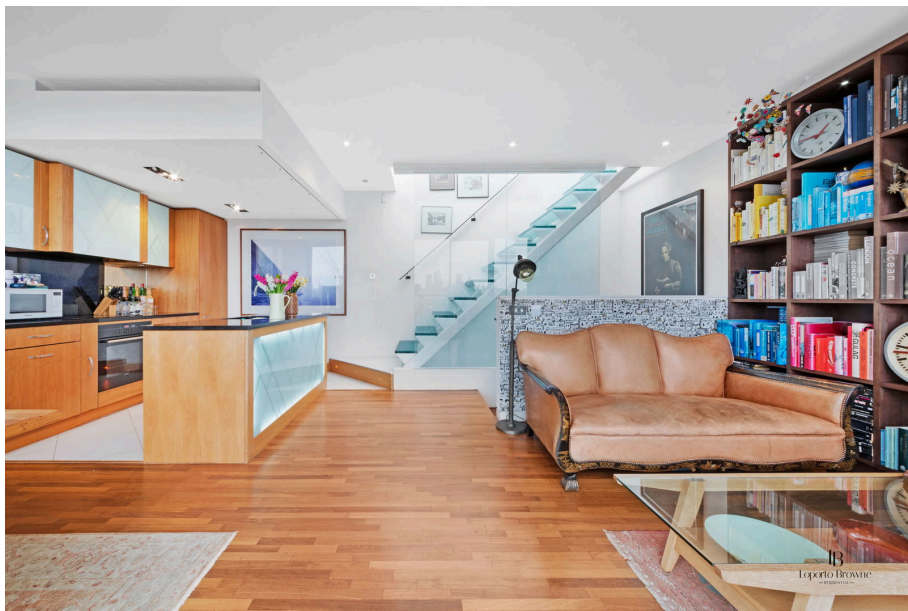
The Jam Factory, SE1

Guide Price £1,000,000

🛏 2 🚿 1 🛋 1



- Guide Price: £1,000,000 to £1,100,000
- Penthouse apartment set within a converted warehouse
- Access to a communal garden
- Lift access and parking can be bought
- Airconditioning and zonal lighting
- 2 bed, 1 bathroom with a balcony and roof terrace
- Stylish design throughout
- Sensational views over the City
- Private security and concierge
- Oli and Liana are proud to be instructed on this superb penthouse apartment



Guide is £1,000,000 to £1,100,000

Penthouse with a Past: The Jam Factory, SE1

Set within the iconic red-brick Hartley's Jam Factory, this duplex penthouse is packed with industrial character and unlike anything else on the market. Converted in 2003, this Victorian building delivers New York-style loft living with a distinctly London edge.

Step into a striking open-plan living space, where floor-to-ceiling windows span the full width of the room, opening onto a Juliet balcony. A well-designed kitchen with island, moody lighting and clever zoning keeps the space both atmospheric and practical.

Downstairs, you'll find two double bedrooms each with floor-to-ceiling windows creating uninter the London Eye. working from hc

