



Loporto Browne
— RESIDENTIAL —

Croxley Road, W9

Guide Price £650,000

🛏 2 🚿 2 🛋 1

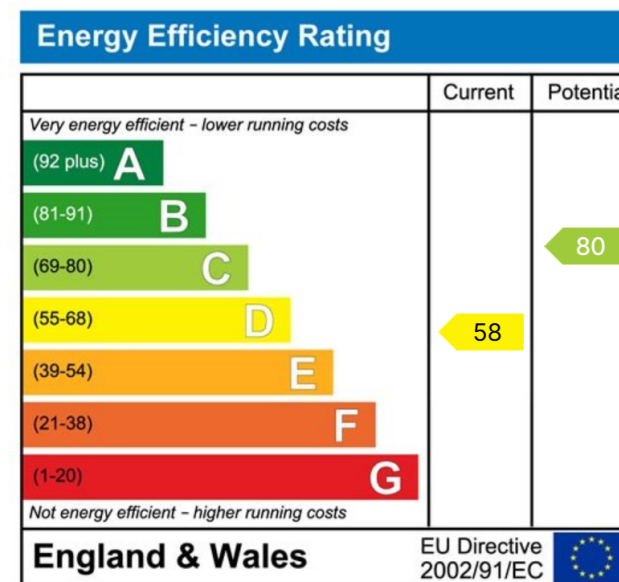
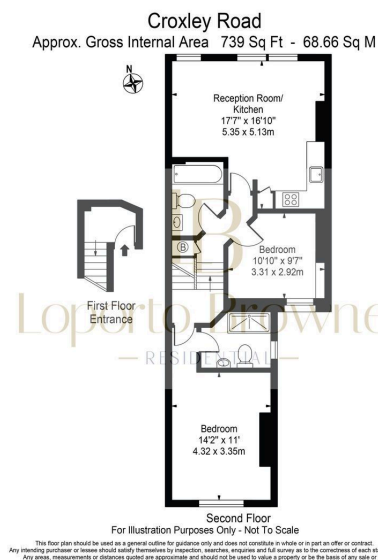


- Please contact Loporto Browne Residential to arrange a viewing at your earliest convenience
- Beautifully finished throughout to a high standard with stylish modern interiors
- Two spacious double bedrooms, including a principal suite with en-suite
- Beautiful modern street perfectly positioned between Maida Vale, Queen's Park and North Kensington
- Close to excellent local amenities including cafés, restaurants, boutique shops and the Queen's Park and Gunpowder Square and Westbourne Park stations nearby (Bakerloo, Overground, Hammersmith & City and Circle Lines)



This beautifully renovated two-bedroom, two-bathroom apartment is set on the top floor of an elegant Victorian conversion on Croxley Road, perfectly positioned between Maida Vale, Queen's Park, and North Kensington. Recently refurbished throughout to a high standard, the property offers bright and stylish interiors that combine period charm with contemporary comfort.

Please contact Loporto Browne Residential to arrange a viewing at your earliest convenience.



LB Residential
Grand Union Studios
332 Ladbroke Grove
W10 5AD

Email: hello@lbresidential.co.uk
Web: www.lbresidential.co.uk
Tel: 0203 062 6262