



LB

LB

Loporto Browne
— RESIDENTIAL —

Farm Avenue, NW2

Guide Price £400,000

🛏 2 🚿 1 🚗 1



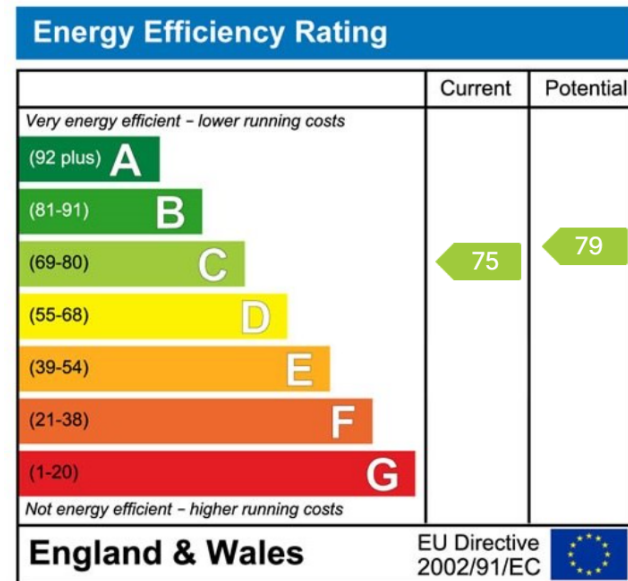
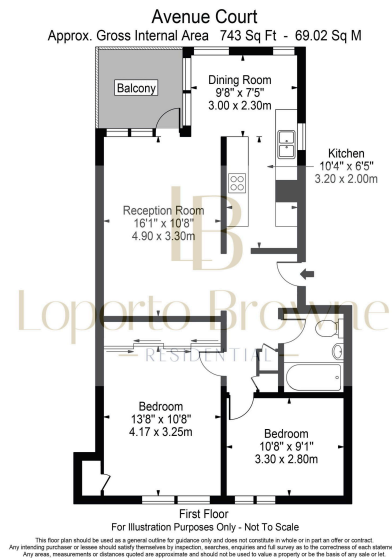
- GUIDE PRICE £400,000 to £450,000
- Private lock-up garage offering secure parking or additional storage
- Chain Free
- Close to Outstanding Little Learners Montessori Nursery and St Agnes Catholic School
- Sleek fitted kitchen with contemporary ergonomic design
- Large private balcony, perfect for relaxing or entertaining
- Excellent transport links: Cricklewood Station (Thameslink) and multiple bus routes
- Benefiting from miles & proximity to the Brent Cross regeneration project
- Super stylish two-bedroom apartment finished to a high modern standard
- Liana & Oli are delighted to be instructed on this wonderful home



GUIDE PRICE £400,000 to £450,000

A beautifully presented apartment, this stylish two-bedroom home is the perfect choice for first-time buyers seeking modern living in a fantastic North West London location. Finished to a high standard throughout, the property combines contemporary design and everyday comfort, offering two well-proportioned double bedrooms, a sleek fitted kitchen and a large balcony, ideal for enjoying a morning coffee or evening glass of wine. Adding to its appeal, the apartment also benefits from a private lock-up garage, providing secure parking or valuable additional storage, something rarely available in this location.

Liana & Oli are delighted to be instructed on this wonderful home, which is offered to the market chain-free. Early viewing is highly recommended.



LB Residential
Grand Union Studios
332 Ladbroke Grove
W10 5AD

Email: hello@lbresidential.co.uk
Web: www.lbresidential.co.uk
Tel: 0203 062 6262