




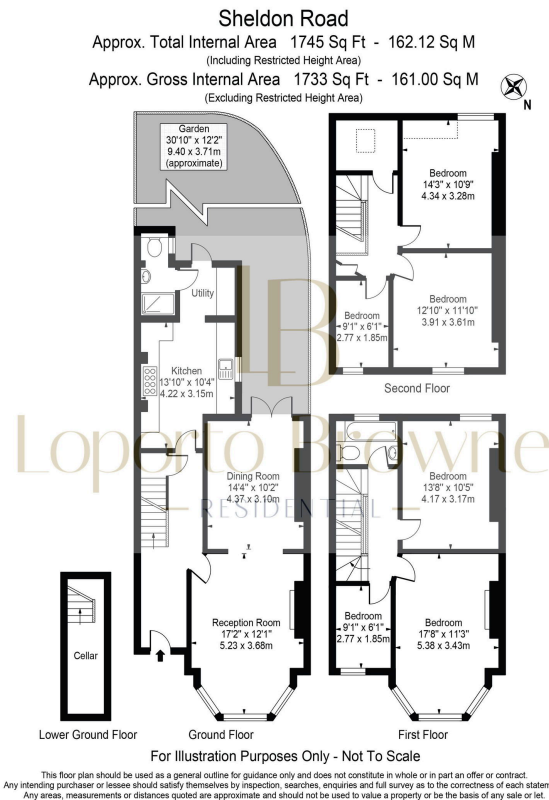
## Sheldon Road, NW2

Guide Price £1,000,000

 6  2  2



- GUIDE PRICE £1,000,000 TO £1,100,000
- Measuring 1,745 sq ft - Six-bedroom Edwardian family home
- Elegant period features including marble fireplaces
- Bay-fronted double reception with French doors
- Bright shaker-style kitchen with gas range cooker
- Versatile basement with storage/wine cellar potential
- Moments from Gladstone Park and local amenities
- Excellent local and private school access with coach pick-up
- Great transport links: Jubilee Line & Thameslink nearby
- Oli & Liana are delighted to be instructed as sole agents on this lovely family house.



**GUIDE PRICE £1,000,000 TO £1,100,000**

A six-bedroom Edwardian family home blending period charm with everyday practicality. Located on Sheldon Road just a short stroll from the cafés and connections of Willesden Green and Cricklewood this freehold property offers 1,745 sq ft of versatile space perfectly suited to family life.

Oli & Liana are delighted to be instructed as sole agents on this lovely family house.