

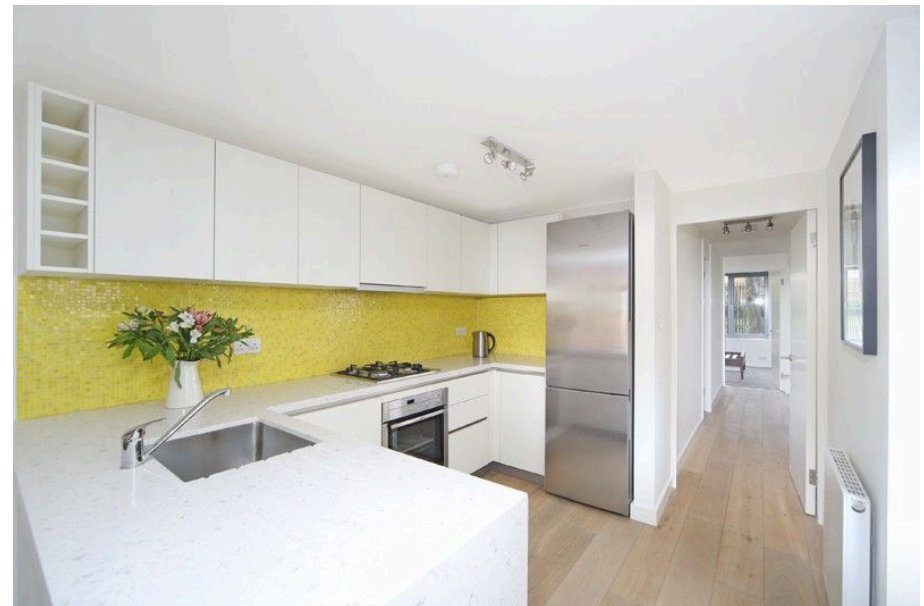


Loporto Browne
— RESIDENTIAL —

Sandbourne, W11

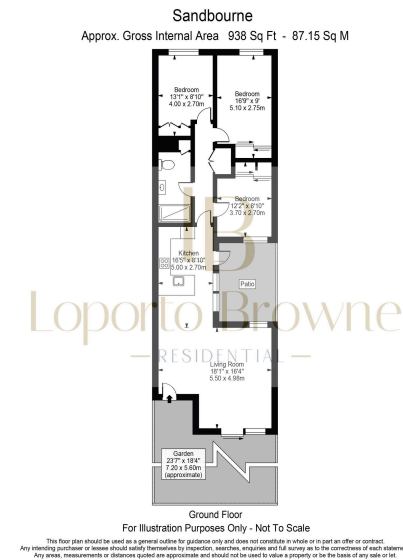
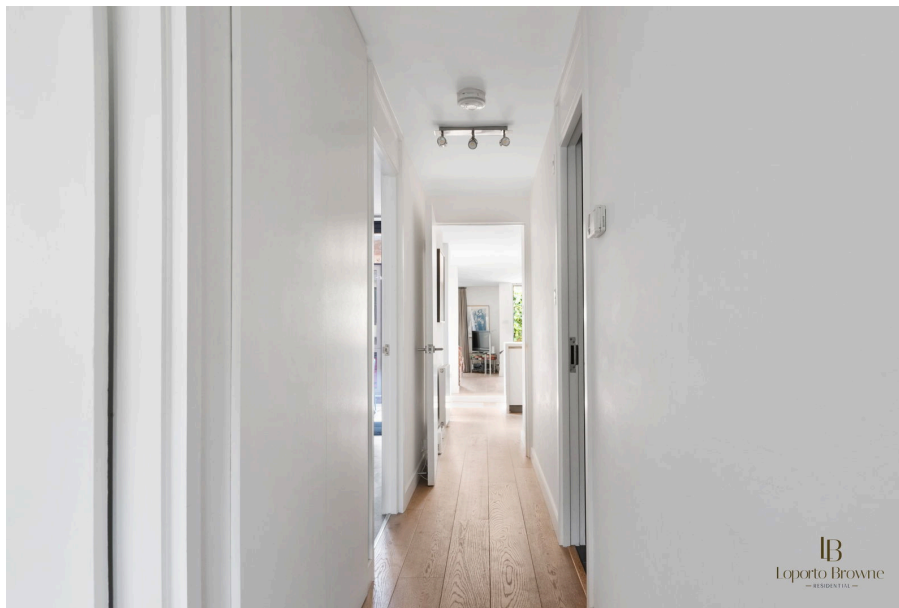
£725,000

3 2 1



- 3 bed and 2 bathrooms
- South west facing private garden
- High finish
- Communal garden
- Excellent transport links to take you all over London
- Own entrance
- Separate utility room
- Heating and hot water included in the service charge
- Purpose built block in a superb location in Notting Hill
- Strong rental yield for BTL and investors

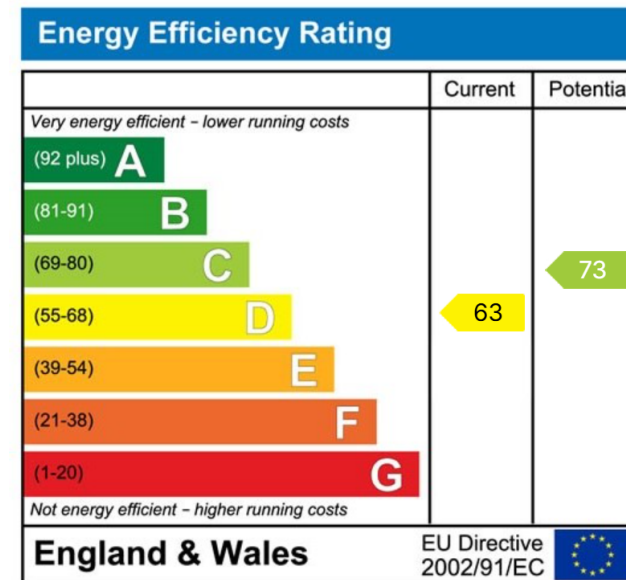




This attractive maisonette with 916 sq.ft resides in the heart of Notting Hill; sandwiched between Ledbury Road, Westbourne Park Road, Talbot Road and St. Stephen's Gardens sits this block of flats; Sandbourne.

The private entrance on the ground floor accesses through a tranquil and secluded southwest facing garden that takes you into the spacious living room and dining area which leads to a fully functional, separate kitchen.

There are three spacious double bedrooms with built in storage. There are two separate bathrooms and a utility room. There is an abundance of storage throughout the apartment.



LB Residential

Grand Union Studios
332 Ladbroke Grove
W10 5AD

Email: hello@lbresidential.co.uk

Web: www.lbresidential.co.uk

Tel: 0203 062 6262