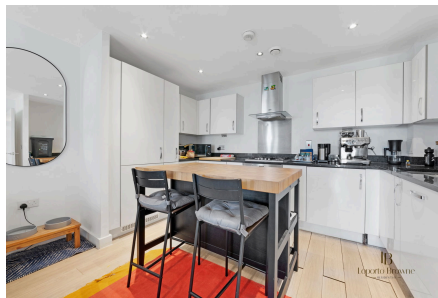


Cipher Court, NW2

Guide Price £375,000

🛏 2 🚿 2 🛋 1



Guide Price: £375,000 to £425,000

Stunning Two-Bedroom, Two-Bathroom Apartment in a Gated Development – Cipher Court, NW2

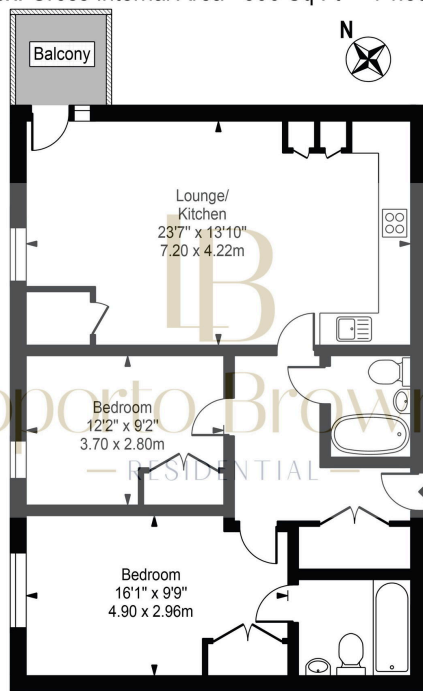
An immaculately presented and spacious third floor apartment benefits from an abundance of natural light and features a dual-aspect open-plan kitchen/living area, perfect for modern living.

The well-designed layout comprises three good-sized bedrooms, complemented by two sleek bathrooms one en-suite as well as a eat-in kitchen with modern appliances. Enjoying a tranquil location on the residential cul-de-sac.

Key Features

- Guide Price: £375,000 to £425,000
- Two double bedrooms, including a master with en-suite
- Lift access
- Open-plan kitchen/reception room with integrated appliances
- Stylish family bathroom
- Private balcony offering outdoor space
- Secure underground parking (permit fee applies)
- Communal roof terrace with fantastic south facing views over London
- Landscaped communal garden with a pond and seating area
- Excellent energy efficiency rated B

Cipher Court
 Approx. Gross Internal Area 806 Sq Ft - 74.88 Sq M



Third Floor

For Illustration Purposes Only - Not To Scale

This floor plan should be used as a general outline for guidance only and does not constitute in whole or in part an offer or contract.
 Any intending purchaser or lessee should satisfy themselves by inspection, searches, enquiries and full survey as to the correctness of each statement.
 Any areas, measurements or distances quoted are approximate and should not be used to value a property or be the basis of any sale or let.