



Loporto Browne
— RESIDENTIAL —

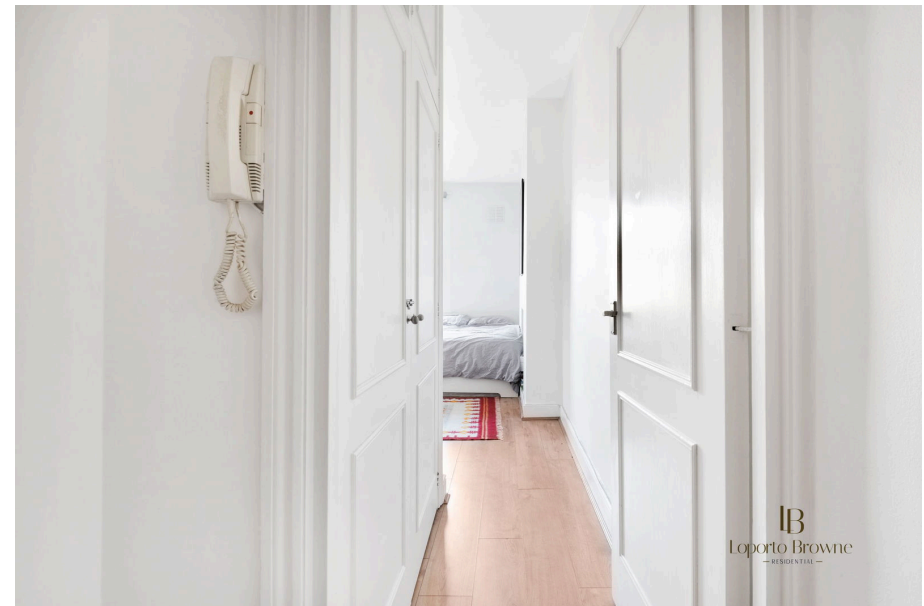
Brondesbury Villas, NW6

Guide Price £300,000

1 1 0

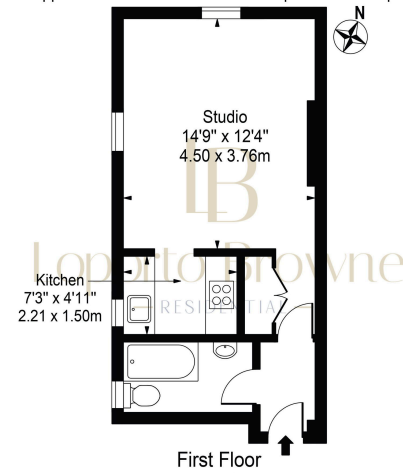


- Guide Price: £300,000-£325,000
- Period conversion
- Bright and airy and looks south and west
- High ceilings
- Fantastic location benefiting from many amenities
- Share of freehold
- Ideal studio flat for first time buyers, buy to let investors or a pied-a-terre.
- Wooden floors
- Separate functional kitchen
- Oli and Liana are delighted to be instructed to sell this lovely studio flat





Brondesbury Villas
Approx. Gross Internal Area 313 Sq Ft - 29.08 Sq M



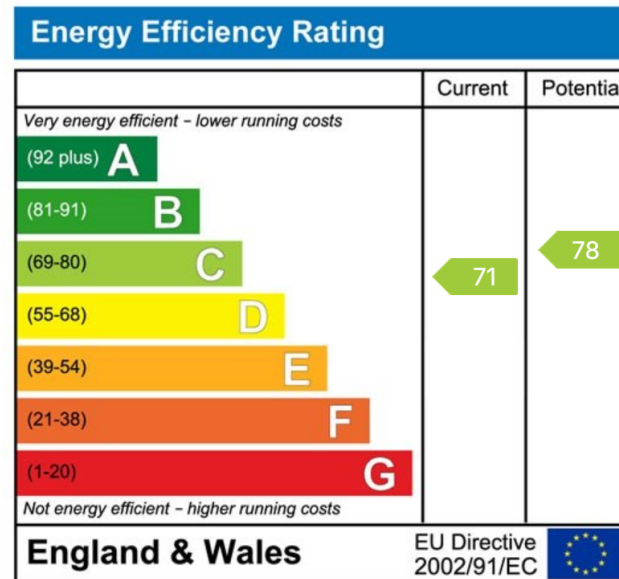
For Illustration Purposes Only - Not To Scale
This floor plan should be used as a general guide only and does not constitute a contract. Any intending purchaser or lessee should satisfy themselves by inspection, enquiries and full survey as to the correctness of each statement. Any areas, measurements or distances quoted are approximate and should not be used to value a property or be the basis of any sale or let.

Guide Price: £300,000- £325,000

LB Residential are instructed to sell this perfect studio flat, located on this tree lined street, the flat is in a Victorian period conversion that has a modern design occupying 313 sq.ft of living space. It is an ideal studio flat for first time buyers, buy to let investors or a pied-a-terre.

The flat looks south and west and is peaceful and quiet, as it is on the first floor it benefits from high ceilings and period features.

Brondesbury Villas is moments from the amenities of Salusbury Road, living in Queens Park feels like living in an urban village. Why would you need to leave when you have everything on your doorstep?



LB Residential

Grand Union Studios

332 Ladbroke Grove

W10 5AD

Email: hello@lbresidential.co.uk

Web: www.lbresidential.co.uk

Tel: 0203 062 6262