

## Omnibus House, NW2

Guide Price £550,000

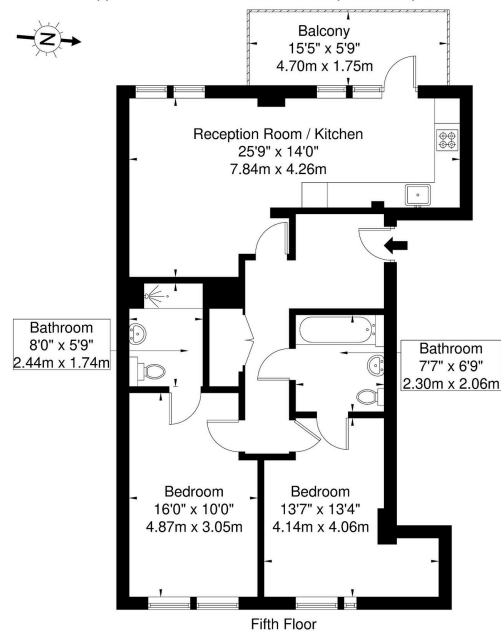
🛏 2 🚿 2 🛋 1



- 2 double bedroom, 2 bathroom Apartment
- Open-plan living with a large L-shaped living room
- Excellent location is moments away from Cricklewood Overground
- Lock up garage
- Brent Cross regeneration is close by
- Located on the top floor of a sought-after new development in NW2
- Fully integrated kitchen including high-end appliances
- Private terrace with stunning views over the London skyline
- Communal garden with play area
- GUIDE PRICE £550,000 to £595,000

### Omnibus House Cricklewood Broadway NW2 2DP

Approx. Gross Internal Area = 78.2 sq m / 841 sq ft



Ref

Copyright

**BLEU  
PLAN**

The Floor plan is not to scale and measurements and areas shown are approximate and therefore should be used for illustrative purposes only. The plan has been prepared in accordance with the RICS code of Measuring Practice and whilst we have confidence in the information produced it must not be relied on. If there is any aspect of particular importance, you should carry out or commission your own inspection of the property.  
Copyright © BLEUPLAN

A 2 double bedroom, 2 bathroom apartment located on the top floor of a sought-after new development a short walk away from Cricklewood Overground Train Station with access to the Thameslink, allowing easy and quick access to London's famous streets and landmarks.

It enjoys open-plan living with a large L-shaped living room, dining area and a fully integrated kitchen including high-end appliances, 2 double bedrooms, the main with large en-suite, family

bathroom, private terrace, stunning views over the London skyline including Wembley stadium and lock-up garage. There is ample storage and a well-maintained communal garden.

Property video available upon request.

**GUIDE PRICE £550,000 to £595,000**