



Loporto Browne
— RESIDENTIAL —

Lyndale Avenue, NW2

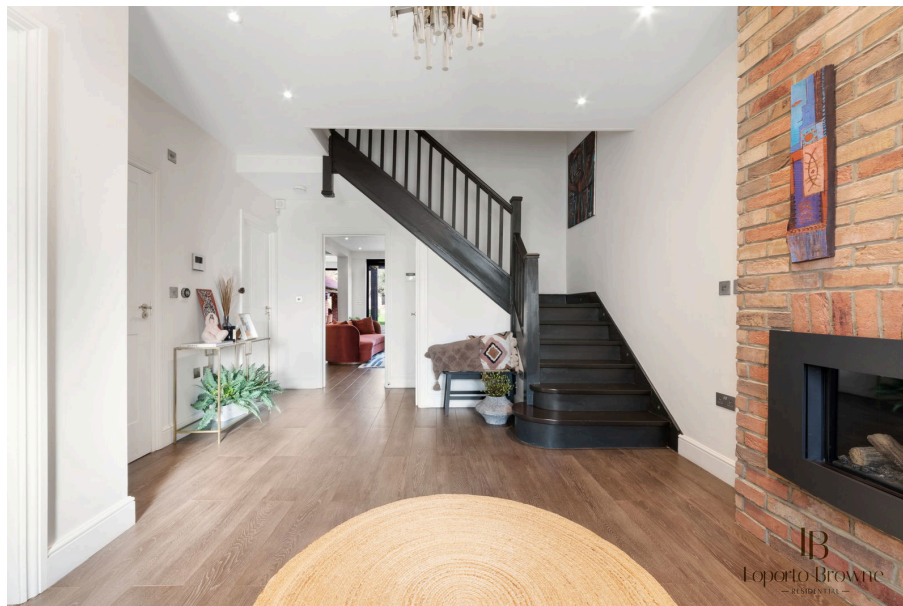
£2,750,000

5 4 2



- Grand entrance hall with a feature fireplace
- Large central island which is the heart of the home
- 110 ft garden
- High ceilings and drenched in natural light
- Dining area framed on two sides by floor-to-ceiling bifold doors
- Plumbed garden studio
- Brick-built summer house is also plumbed for an outdoor kitchen
- Private balcony with a view of the garden
- Four well-proportioned bedrooms, two of which enjoy ensuite shower rooms
- The house is well positioned for superb transport links

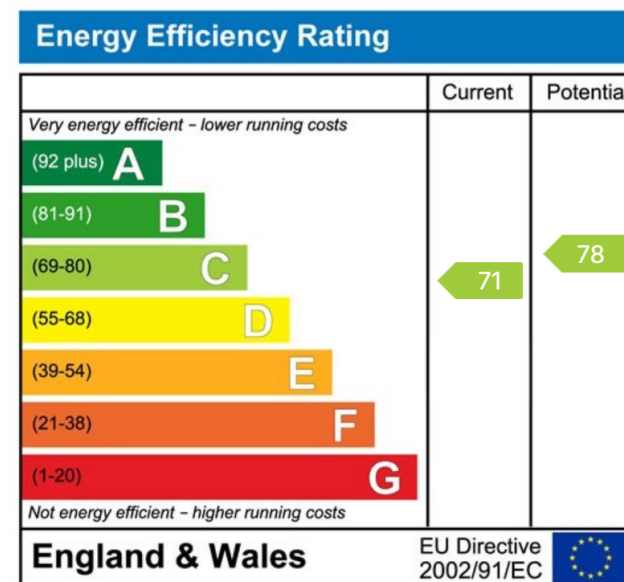




Tucked away on a quiet, tree-lined street between Hampstead and West Hampstead, this spacious five-bedroom home offers a beautifully curated space for both entertaining and family life.

Freehold, off-street parking, and a sought-after location, this home offers the very best of North West London living.

Please reach out to Oli & Liana to arrange your private viewing.



LB Residential
 Grand Union Studios
 332 Ladbroke Grove
 W10 5AD

Email: hello@lbresidential.co.uk
 Web: www.lbresidential.co.uk
 Tel: 0203 062 6262