

Croxley Road, W9

Guide Price £500,000

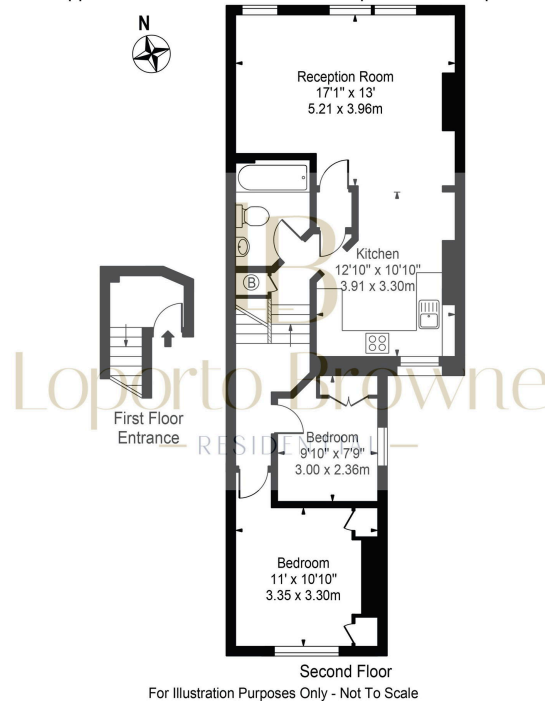
🛏 2 🚿 1 🛋 1



- Please contact Loporto Browne Residential to arrange a viewing at your earliest convenience
- Situated on the top floor of a Victorian conversion
- Spacious layout and period features
- Strong transport links with easy access to Queen's Park and Westbourne Park Tube stations
- Queen's Park a short stroll away
- GUIDE PRICE £500,000 to £550,000
- An exciting renovation opportunity
- Nestled between the sought-after areas of Maida Vale, Queen's Park, and North Kensington
- Sunday farmers' market in Queen's Park
- Offers a blank canvas in this sought-after location



Croxley Road, W9
 Approx. Gross Internal Area 739 Sq Ft - 68.66 Sq M



This floor plan should be used as a general outline for guidance only and does not constitute in whole or in part an offer or contract.
 Any intending purchaser or lessee should satisfy themselves by inspection, searches, enquiries and full survey as to the correctness of each statement.
 Any areas, measurements or distances quoted are approximate and should not be used to value a property or be the basis of any sale or let.

This two-bedroom home, situated on the top floor of a Victorian conversion on Croxley Road, presents an exciting renovation opportunity. With its spacious layout and period features, it offers a blank canvas to create a home tailored to your personal taste.

Please contact Loporto Browne Residential to arrange a viewing at your earliest convenience.
GUIDE PRICE £500,000 to £550,000