



Loporto Browne  
— RESIDENTIAL —

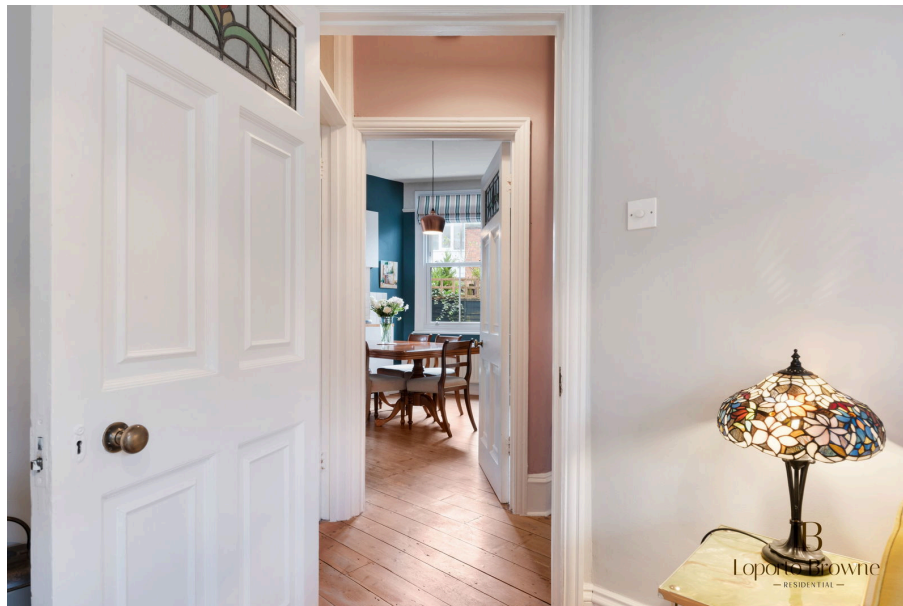
# Temple Road, NW2

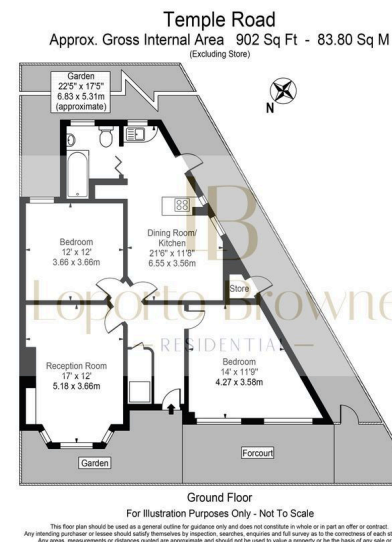
Guide Price £600,000

2 1 1



- Guide Price £600,000 to £650,000
- Original wooden floors, fireplaces and high ceilings
- Separate Eat in kitchen/ dining room
- Double Glazing
- Tastefully designed and share of freehold
- 2 double bedrooms, 1 bathroom with its own entrance
- End of terrace with views over the church
- South facing private decked garden
- Abundance of storage
- Oli and Liana are delighted to be instructed on this gorgeous flat, please watch the video and book a viewing.





## Guide Price £600,000 to £650,000

Full of natural light, this beautiful home has a welcoming entrance hall which leads to a bright reception room with a gorgeous period fireplace and a large bay window giving a sense of air and light. There are 2 double bedrooms and one bathroom. The generous main bedroom has plenty of storage is also drenched in natural sunlight. The property is elegant, requires no work and is ready to move into. The kitchen is ideal for entertaining as it looks onto an expansive dining area. This tastefully designed property also has original wooden floors and fireplaces. The flat is completed by a private decked garden at the back which also leads to a separate utility room at the side.

