


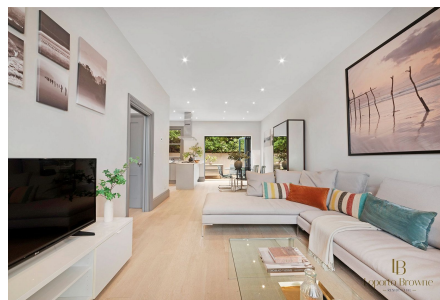


## Ponsard Road, NW10

Guide Price £1,000,000

 3  3  2



**Guide Price: £1,000,000 to £1,100,000**

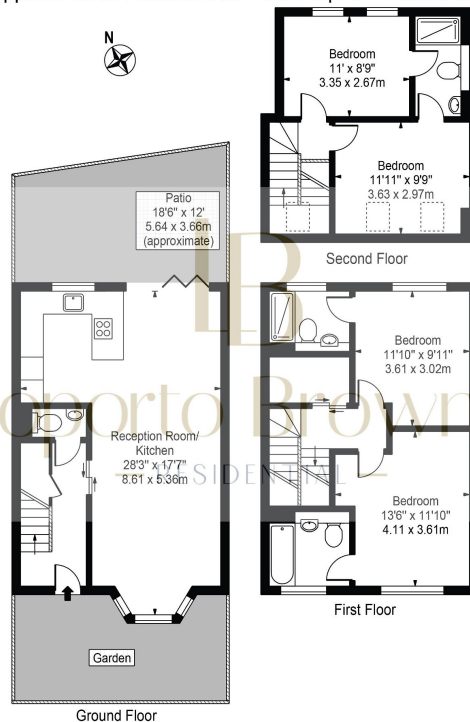
Located in this tranquil cul-de-sac, this stunning four double bedroom end-of-terrace Victorian family home spans three floors. This home has undergone a complete renovation and boasts an exquisite finish throughout; however, it still captures the original historical feel and period features. An ideal family home ready to move into within a peaceful corner of Kensal Green NW10.

Oli & Liana are delighted to be instructed on this exceptional home, please watch the video and a viewing is highly recommended to fully appreciate the quality and uniqueness of this special house.

## Key Features

- Guide Price: £1,000,000 to £1,100,000
- Three modern bathrooms
- High standard of finish throughout
- Separate utility room
- Private, well-maintained garden
- Four spacious bedrooms
- End-of-terrace in a peaceful cul-de-sac
- Open-plan kitchen and dining area
- Separate WC
- Great location in the heart of Kensal Green

**Ponsard Road**  
 Approx. Gross Internal Area 1254 Sq Ft - 116.50 Sq M



For Illustration Purposes Only - Not To Scale

This floor plan should be used as a general outline for guidance only and does not constitute in whole or in part an offer or contract.  
 Any intending purchaser or lessee should satisfy themselves by inspection, searches, enquiries and full survey as to the correctness of each statement.  
 Any areas, measurements or distances quoted are approximate and should not be used to value a property or be the basis of any sale or let.