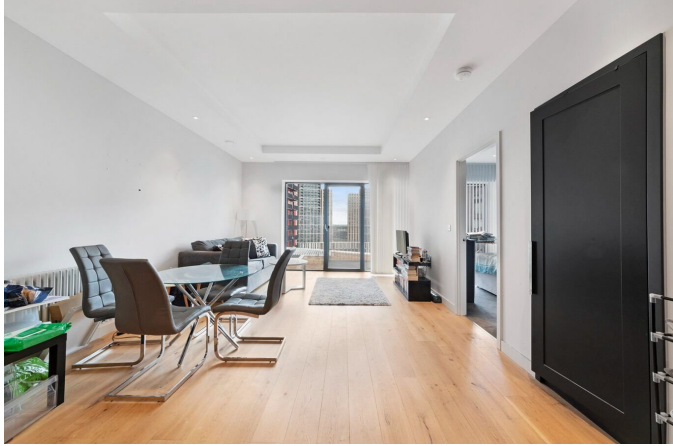


Modena House, London City Island, E14

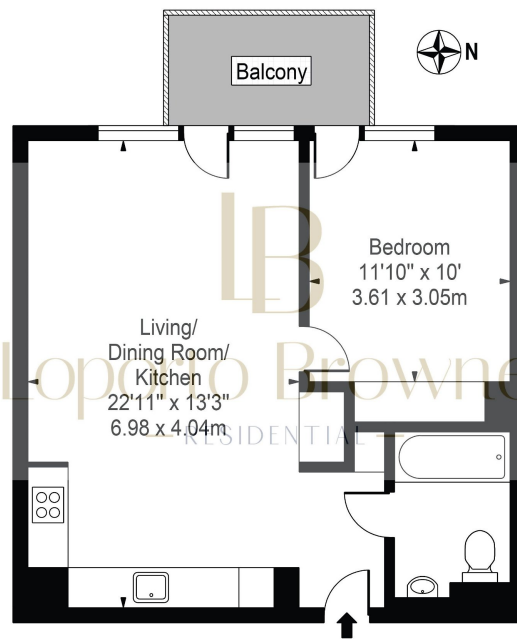
£450,000

🛏️ 1 🚿 1 🚿 1



- One bedroom with a private balcony
- 24 hour concierge
- Landscaped gardens
- Swimming pool and spa
- Gym
- Excellent transport links via DLR and Jubilee Line
-
-

Modena House
 Approx. Gross Internal Area 549 Sq Ft - 51.00 Sq M



Ninth Floor

For Illustration Purposes Only - Not To Scale

This floor plan should be used as a general outline for guidance only and does not constitute in whole or in part an offer or contract.
 Any intending purchaser or lessee should satisfy themselves by inspection, searches, enquiries and full survey as to the correctness of each statement.
 Any areas, measurements or distances quoted are approximate and should not be used to value a property or be the basis of any sale or let.

Stylish one-bedroom apartment positioned in Modena House, within the sought-after London City Island development in E14. Spanning approximately 550 sq ft, this residence offers an inviting open plan kitchen/living space, a spacious double bedroom with integrated storage, a contemporary bathroom, and a secluded balcony. The apartment showcases modern living with its industrial-inspired loft features while maintaining a high level of refinement.

Residents of London City Island enjoy exclusive membership to the City Island Social club, granting access to a variety of upscale private amenities. These amenities include a clubhouse, 24/7 concierge service, a convenience store, a fully equipped gym, spa facilities, screening rooms, swimming pools, and lush gardens. Commuting is convenient with nearby access to the DLR, Jubilee Line, and local bus routes, offering easy travel options.

LB Residential are happy to be instructed to sell this fantastic apartment.