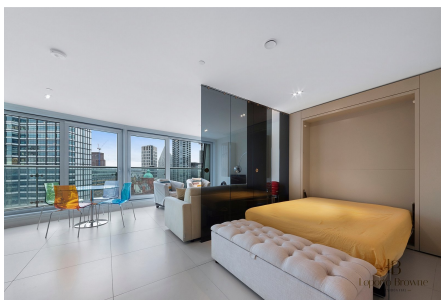


## Bezier Apartments, City Road, London

£550,000

🛏 0 🚿 1 🚗 1



Situated in the heart of the city, surrounded by cultural hubs and prime dining establishments this exceptional property promises the ultimate urban lifestyle.

A dedicated concierge team available 24/7 providing a level of service that adds an extra layer of exclusivity to the residence. Cutting-edge, on-site gym equipped with modern facilities, offering the convenience of a private fitness centre just steps away from the front door. Breathtaking panoramic views of the iconic London skyline.

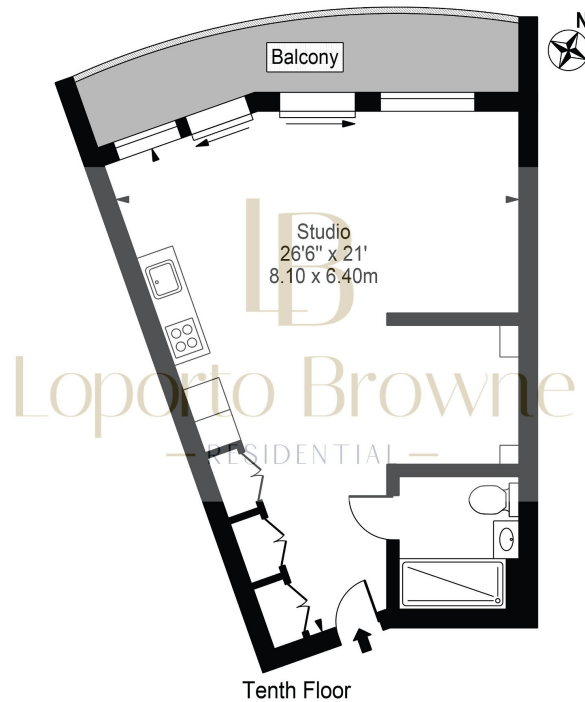
Bezier Apartments is located in the heart of London and boasts a plethora of amenities, ensuring a well-rounded and convenient lifestyle for its residents.

## Key Features

- High end studio flat on the 10th floor
- Perfect pied a terre, first time buy or a buy to let investment
- Breath-taking panoramic views of the iconic London skyline
- Access to gym, sauna and steam room
- Excellent transport links
- Situated in the heart of the city
- 
- 

### Bezier Apartments

Approx. Gross Internal Area 462 Sq Ft - 42.90 Sq M



For Illustration Purposes Only - Not To Scale

This floor plan should be used as a general outline for guidance only and does not constitute in whole or in part an offer or contract. Any intending purchaser or lessee should satisfy themselves by inspection, searches, enquiries and full survey as to the correctness of each statement. Any areas, measurements or distances quoted are approximate and should not be used to value a property or be the basis of any sale or let.