



31 Draper Road

, Bournemouth, BH11 8BE

Guide price £270,000





## 31 Draper Road

, Bournemouth, BH11 8BE

Guide Price £270,000 - £305,000

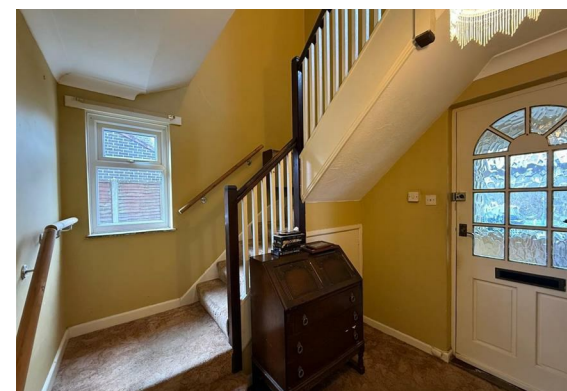
This three-bedroom semi-detached family home is offered to the market with vacant possession and presents an excellent opportunity for purchasers seeking a refurbishment project in an established residential location.

The property appears to be in sound structural condition and benefits from double-glazed windows along with UPVC fascias and soffits. Internally, the accommodation now requires full redecoration throughout, together with the installation of a new kitchen and bathroom, allowing an incoming buyer to modernise and tailor the home entirely to their own specification.

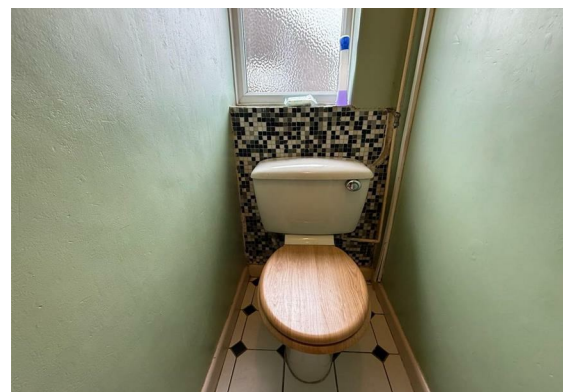
The existing layout provides well-proportioned rooms suited to family living, with scope to enhance and reconfigure subject to the necessary consents. The three bedrooms are arranged over the upper floor, making the property ideal for owner-occupiers, investors or those looking to add value through improvement.

Externally, the home offers the further advantage of off-road parking, outbuilding and garden space, completing what is a compelling prospect for those seeking a project with strong future potential.

Offered with no forward chain, the property is particularly well-suited to buyers keen to move quickly and take on a comprehensive refurbishment.

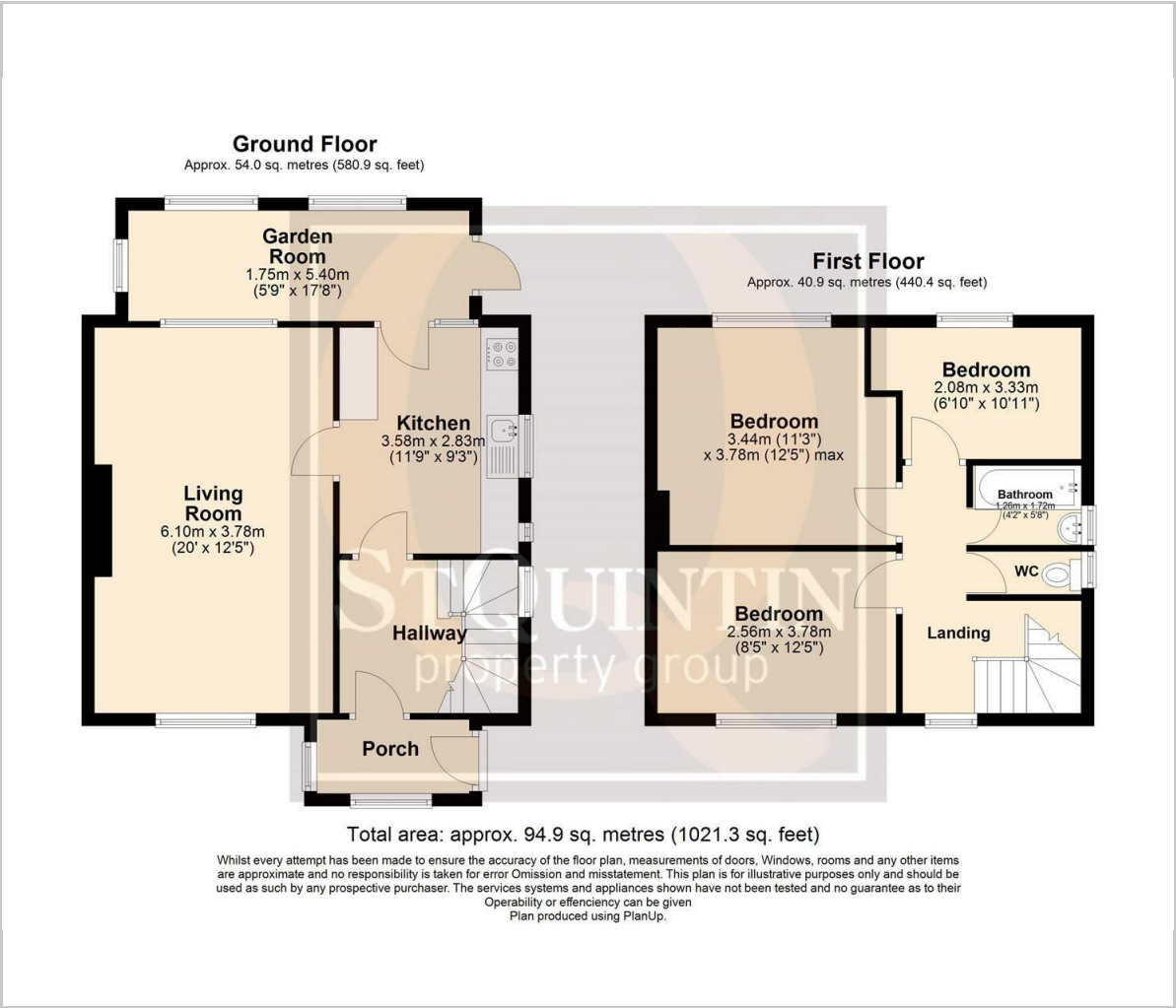








Floor Plan

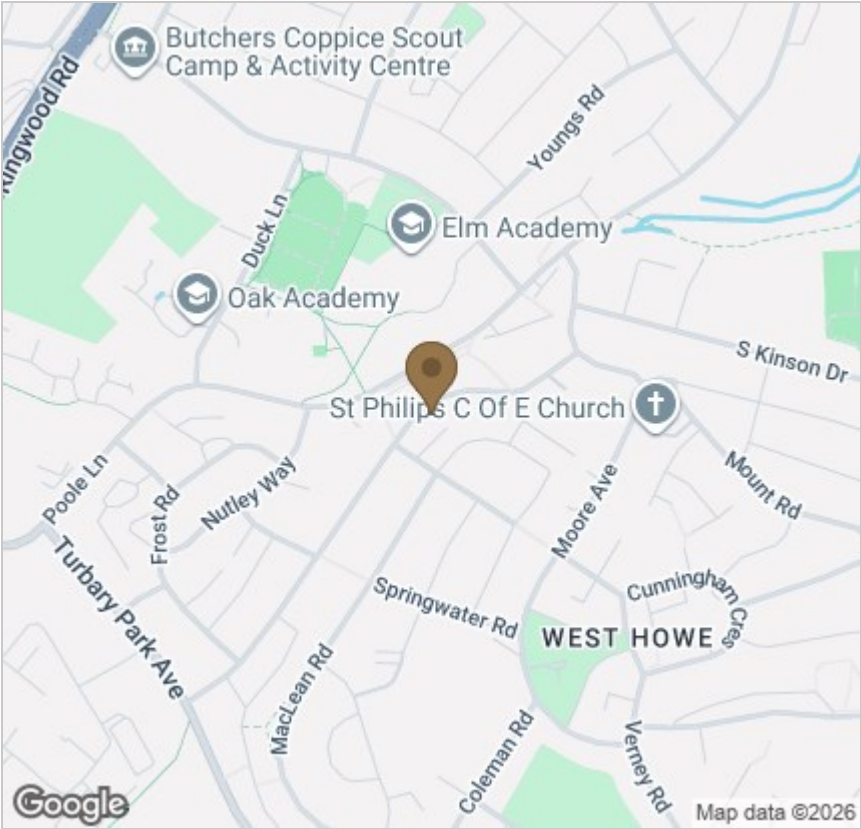


Viewing

Please contact our StQ Property Group Office on 01202877123 if you wish to arrange a viewing appointment for this property or require further information.

These particulars, whilst believed to be accurate are set out as a general outline only for guidance and do not constitute any part of an offer or contract. Intending purchasers should not rely on them as statements of representation of fact, but must satisfy themselves by inspection or otherwise as to their accuracy. No person in this firms employment has the authority to make or give any representation or warranty in respect of the property.

Area Map



Energy Efficiency Graph

