



7 Trigon Road
Poole, BH15 3EP

Offers in excess of £340,000



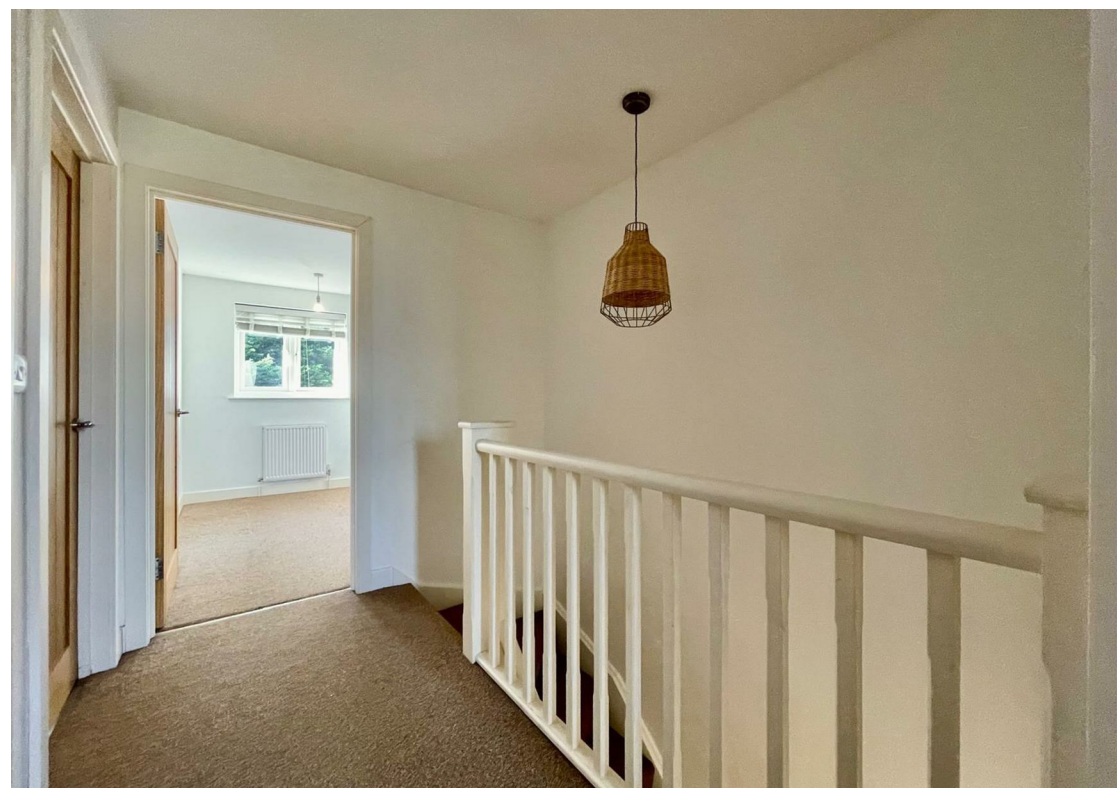
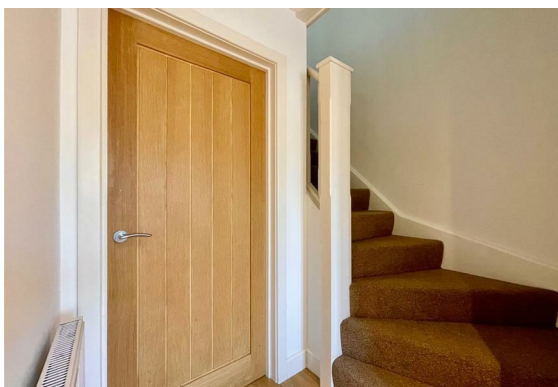
7 Trigon Road

, Poole, BH15 3EP

Viewings By Way Of Appointment -
Open Evening - Monday 12th May
5PM - 7PM please call to book.

This attractive and spacious three-bedroom semi-detached home, built in 2015, is tucked away in a quiet cul-de-sac with excellent access to Bournemouth and Poole. Designed with comfort and efficiency in mind, the property offers a welcoming hallway, a generous lounge/diner with French doors leading to a decked area and private rear garden, a separate modern kitchen, and a convenient downstairs W.C. Upstairs, there are three well-proportioned bedrooms—two of which are doubles with fitted storage—and a contemporary family bathroom.

Built with high-quality finishes throughout, the home features oak laminate flooring, internal oak doors, gas central heating, high-security uPVC double glazing, and a composite front door. Energy efficiency is a key benefit, with LED lighting, A-rated appliances, excellent insulation, and a 1.3kW LG PV solar panel system with a feed-in tariff, helping to reduce energy costs. Outside, the property includes tandem off-road parking for two vehicles and a private rear garden, making it an ideal choice for families or professionals seeking comfort, sustainability, and convenience.





Floor Plan

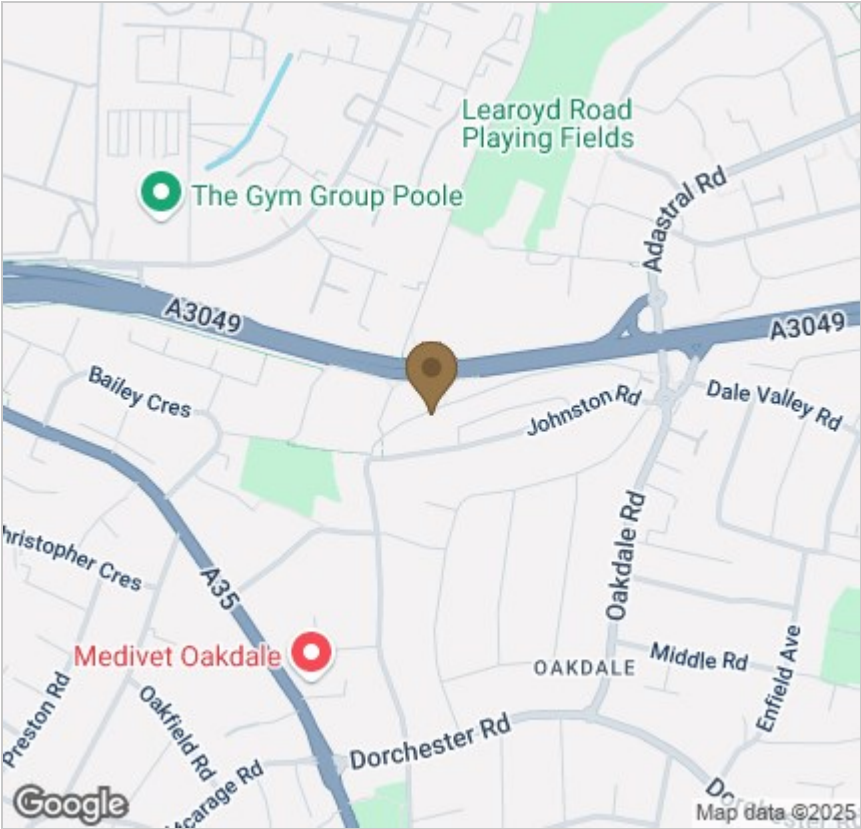


Viewing

Please contact our StQ Property Group Office on 01202877123 if you wish to arrange a viewing appointment for this property or require further information.

These particulars, whilst believed to be accurate are set out as a general outline only for guidance and do not constitute any part of an offer or contract. Intending purchasers should not rely on them as statements of representation of fact, but must satisfy themselves by inspection or otherwise as to their accuracy. No person in this firms employment has the authority to make or give any representation or warranty in respect of the property.

Area Map



Energy Efficiency Graph

