



1 Avalon
, Poole, BH14 8HT

Offers in excess of £900,000



1 Avalon

, Poole, BH14 8HT

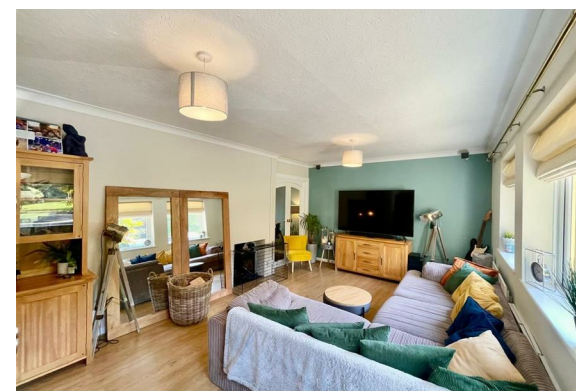
Viewings By Way Of Appointment - Open Evening - Thursday 15th May 5PM - 7PM Booking Essential

Nestled in the desirable area of Avalon, Poole, this splendid four-bedroom house is a true gem, set on a private corner plot of approximately one-third of an acre. Located in one of Lilliput's premier cul-de-sac locations, it is just a stone's throw from the water's edge and within walking distance of Evening Hill, where you can enjoy breath-taking panoramic views over Poole Harbour, Brownsea Island, and Sandbanks.

Upon entering the property through an inviting conservatory-style porch, you are greeted by a spacious and welcoming entrance hall that leads to all principal rooms. The well-planned layout features two reception rooms, including a generous front lounge that boasts three large windows, allowing natural light to flood the space. The heart of the home is undoubtedly the stylish kitchen/dining area, equipped with light wood effect units, quartz work surfaces, and integrated appliances. French doors open out to a delightful rear patio sun terrace, perfect for al fresco dining or simply enjoying the tranquil surroundings.

The accommodation comprises four bedrooms, including a luxurious main bedroom with an en-suite bath/shower room. A second bedroom is accessed by a reception room although this could easily be a dressing room, while a third bedroom offers versatility for various needs. A modern family bathroom and a separate cloakroom complete the interior, ensuring convenience for family living.

With ample parking for up to 11 vehicles and sprawling established grounds, this property offers both space and privacy, making it an ideal family home with significant potential for added value. This is a rare opportunity to acquire a beautifully positioned residence in a sought-after location, perfect for those seeking a blend of comfort and elegance in Poole.





Floor Plan



Viewing

Please contact our StQ Property Group Office on 01202877123 if you wish to arrange a viewing appointment for this property or require further information.

These particulars, whilst believed to be accurate are set out as a general outline only for guidance and do not constitute any part of an offer or contract. Intending purchasers should not rely on them as statements of representation of fact, but must satisfy themselves by inspection or otherwise as to their accuracy. No person in this firms employment has the authority to make or give any representation or warranty in respect of the property.

Area Map



Energy Efficiency Graph

