



Broomfield court Apple Tree Grove
, Ferndown, BH22 9LA

Offers over £300,000



Broomfield court Apple Tree

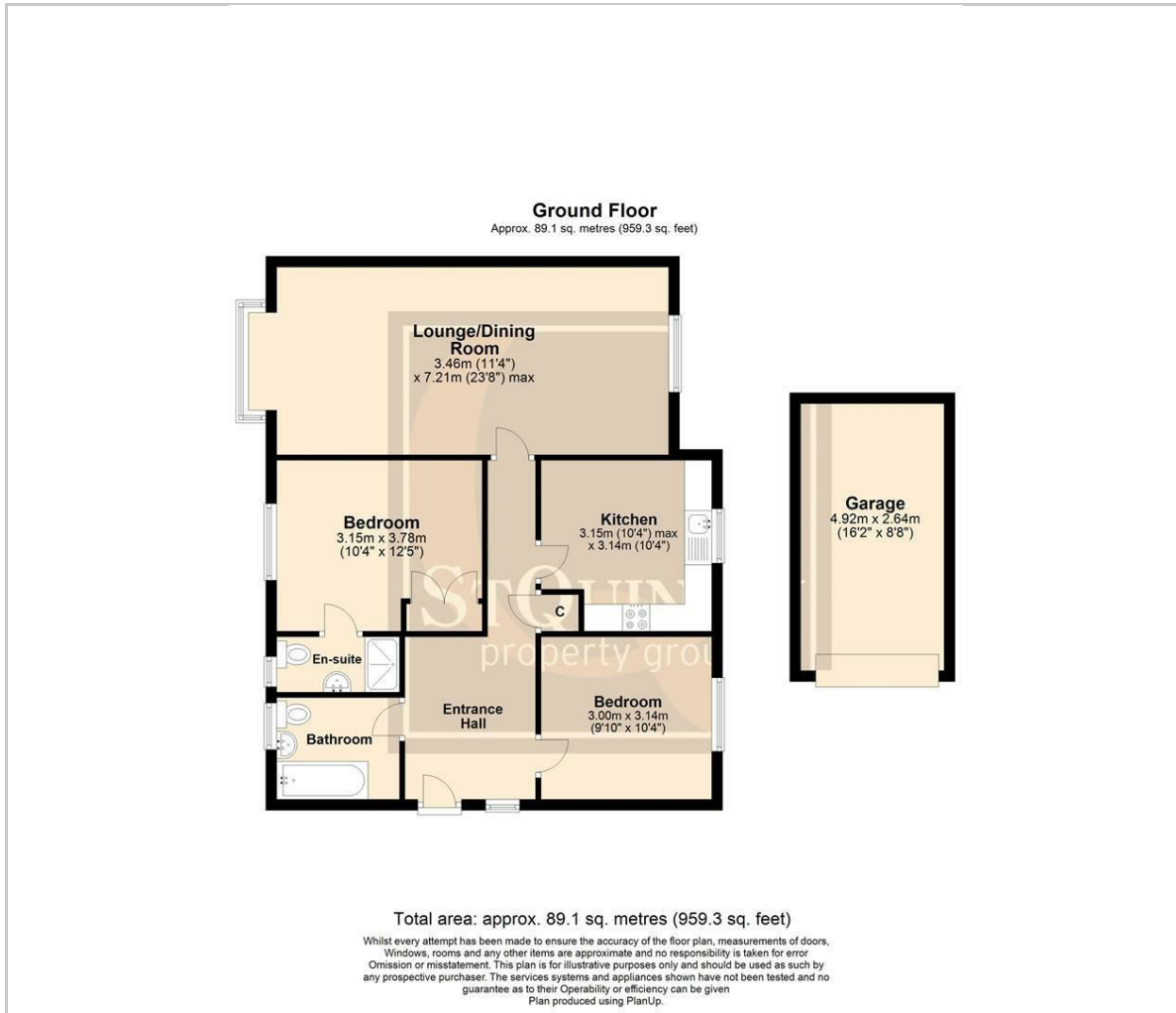
Ferndown, BH22 9LA

St Quintin is delighted to offer this spacious newly refurbished two-bedroom ground floor flat in a quiet cul de sac, benefiting from recently extended lease and situated just half a mile from Ferndown town centre. Entering through the communal front door, a hallway leads to the private entrance into the property where you are greeted by a spacious 21' hall with an airing cupboard and large storage cupboard. The 23' dual aspect sitting/dining room has a sliding glazed door to the private patio and well-maintained communal gardens with a southerly aspect. The modern kitchen has ample base and eye-level units, integrated oven and hob, plumbing for a washing machine, and space for a fridge freezer. The master bedroom is a spacious double with a fitted wardrobe and ensuite shower room. Bedroom two is also a double. The newly fitted bathroom features a panelled bath with mixer taps and shower hose, a pedestal wash hand basin, WC, and fully tiled walls. Ferndown offers nearby nature reserves for woodland walks, excellent schools, and easy access to Bournemouth, Ringwood, and Wimborne. The town centre, half a mile away, has a variety of shops, leisure facilities, and M&S Food Hall. For the active, there's a fitness centre, championship golf courses, the River Stour, and green belt areas with diverse wildlife and scenic walks.





Floor Plan

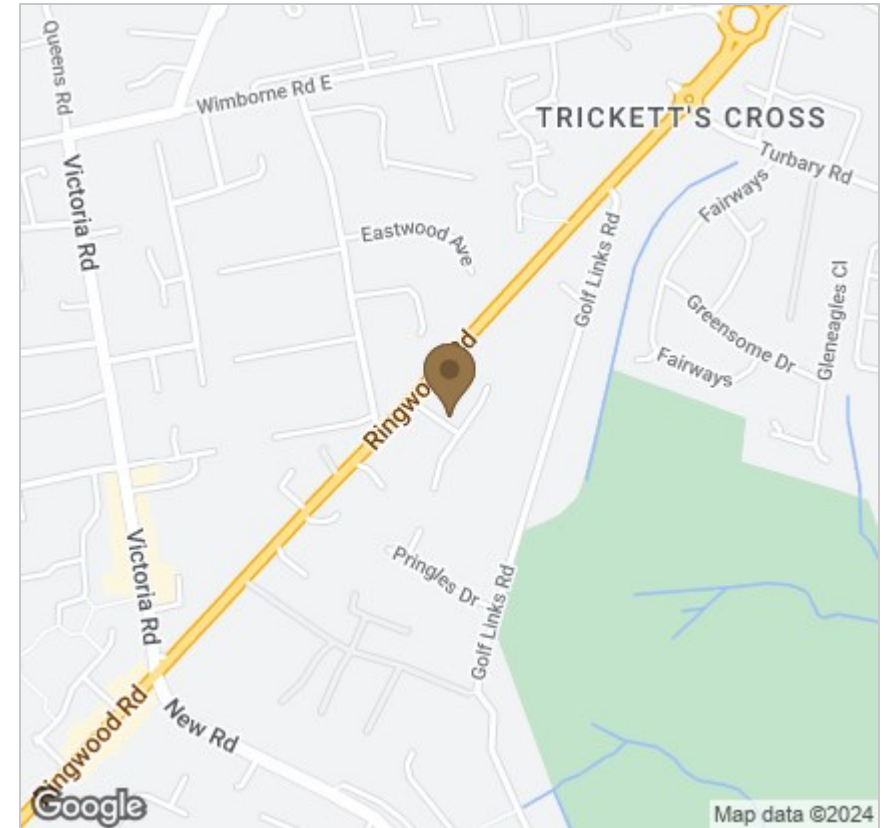


Viewing

Please contact our StQ Property Group Office on 01202877123 if you wish to arrange a viewing appointment for this property or require further information.

These particulars, whilst believed to be accurate are set out as a general outline only for guidance and do not constitute any part of an offer or contract. Intending purchasers should not rely on them as statements of representation of fact, but must satisfy themselves by inspection or otherwise as to their accuracy. No person in this firm's employment has the authority to make or give any representation or warranty in respect of the property.

Area Map



Energy Efficiency Graph

