



20 Henbury House Gardens

Sturminster Marshall, Wimborne, BH21 3TZ

Guide price £400,000



20 Henbury House Gardens

Sturminster Marshall, Wimborne,
BU24 2TZ

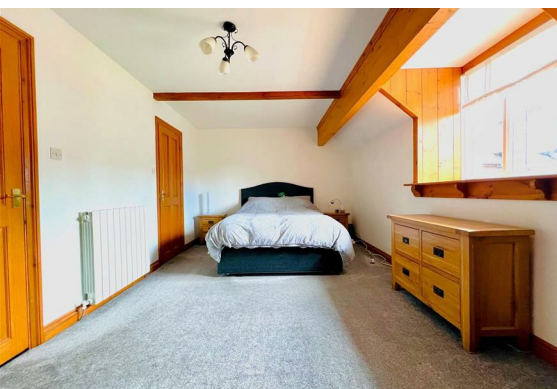
This bespoke home is set within Henbury House, a classic Georgian house built in 1770 occupying private estate grounds. The extensive grounds were sympathetically developed approximately 20 years ago creating a select community within this stunning semi rural position on the outskirts of Wimborne, Dorset with excellent commuting access to Bournemouth, Southampton and London via the A31.

This exceptional home is approached via a private driveway nestling within a mews and benefits from private parking for 2 vehicles as well as ample visitor parking. The Henbury House Estate offers residents exclusive access to woodland and countryside walks in a semi rural environment which belies the developments close proximity to the local market town of Wimborne, Blandford, Poole and Broadstone. The A31 is within close proximity ensuring direct access to the aforementioned conurbations. The current owners have undergone a stunning modernisation project incorporating modern decor, floor coverings, bathrooms and a beautiful kitchen befitting this unique environment.

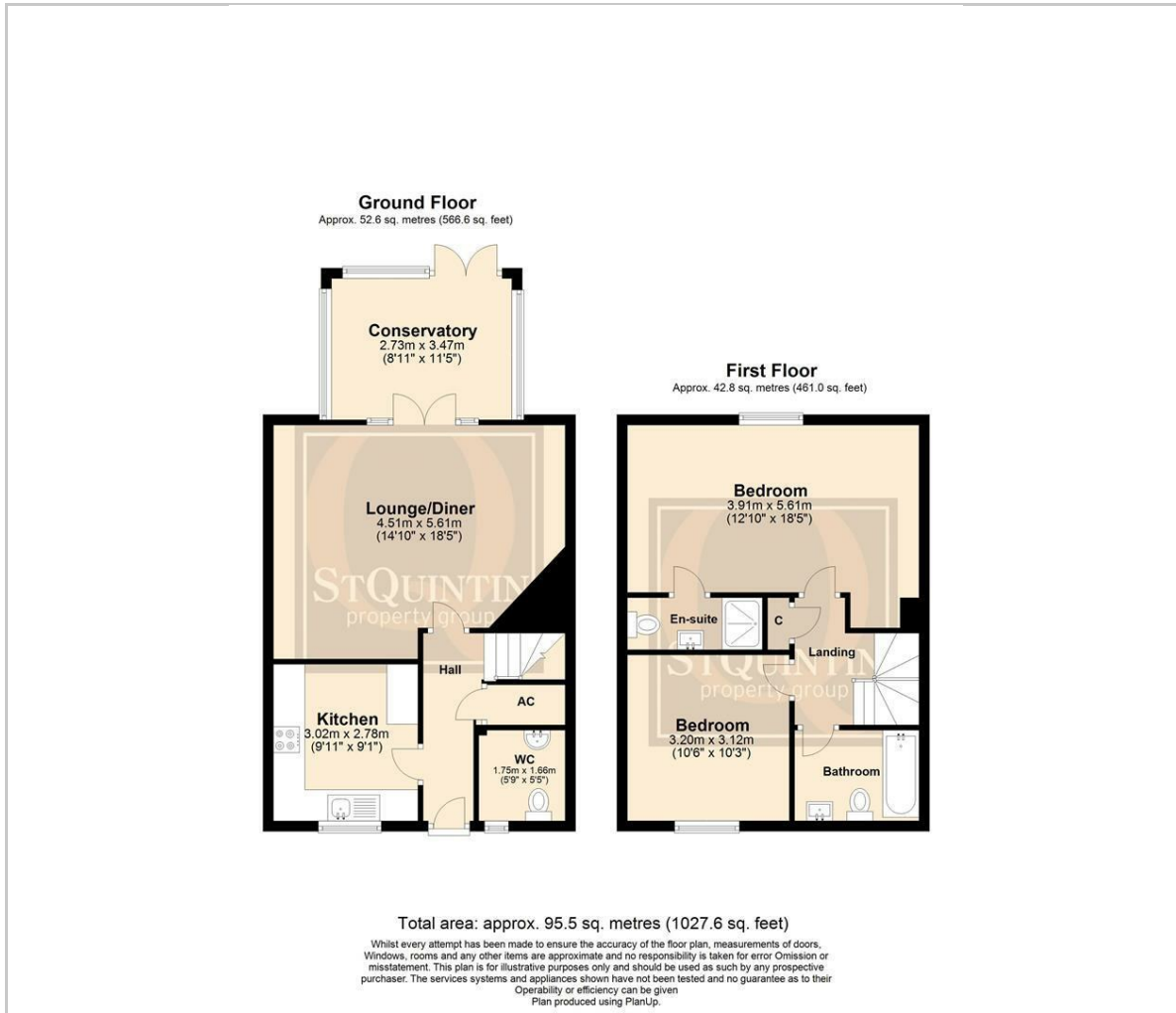
ENTRANCE HALLWAY

With smooth finish ceilings, hard tiled flooring, wall mounted alarm, smoke alarm, large built in storage cupboard housing pressurised hot water cylinder, double panelled radiator, wall mounted thermostat control.





Floor Plan

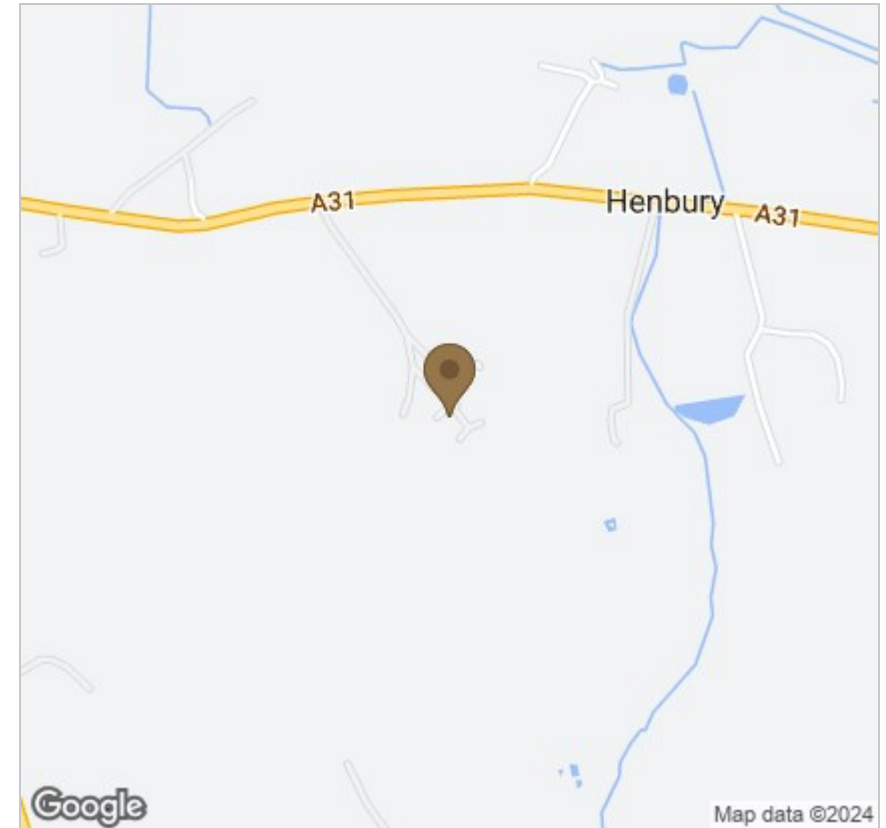


Viewing

Please contact our StQ Property Group Office on 01202877123 if you wish to arrange a viewing appointment for this property or require further information.

These particulars, whilst believed to be accurate are set out as a general outline only for guidance and do not constitute any part of an offer or contract. Intending purchasers should not rely on them as statements of representation of fact, but must satisfy themselves by inspection or otherwise as to their accuracy. No person in this firm's employment has the authority to make or give any representation or warranty in respect of the property.

Area Map



Energy Efficiency Graph

