



20 Dolphin Terrace Westons Lane
, Poole, BH15 1FH

Offers in excess of £225,000

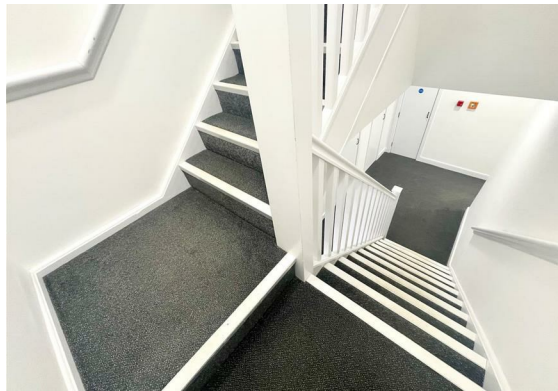


20 Dolphin Terrace Westons

, Poole, BH15 1FH

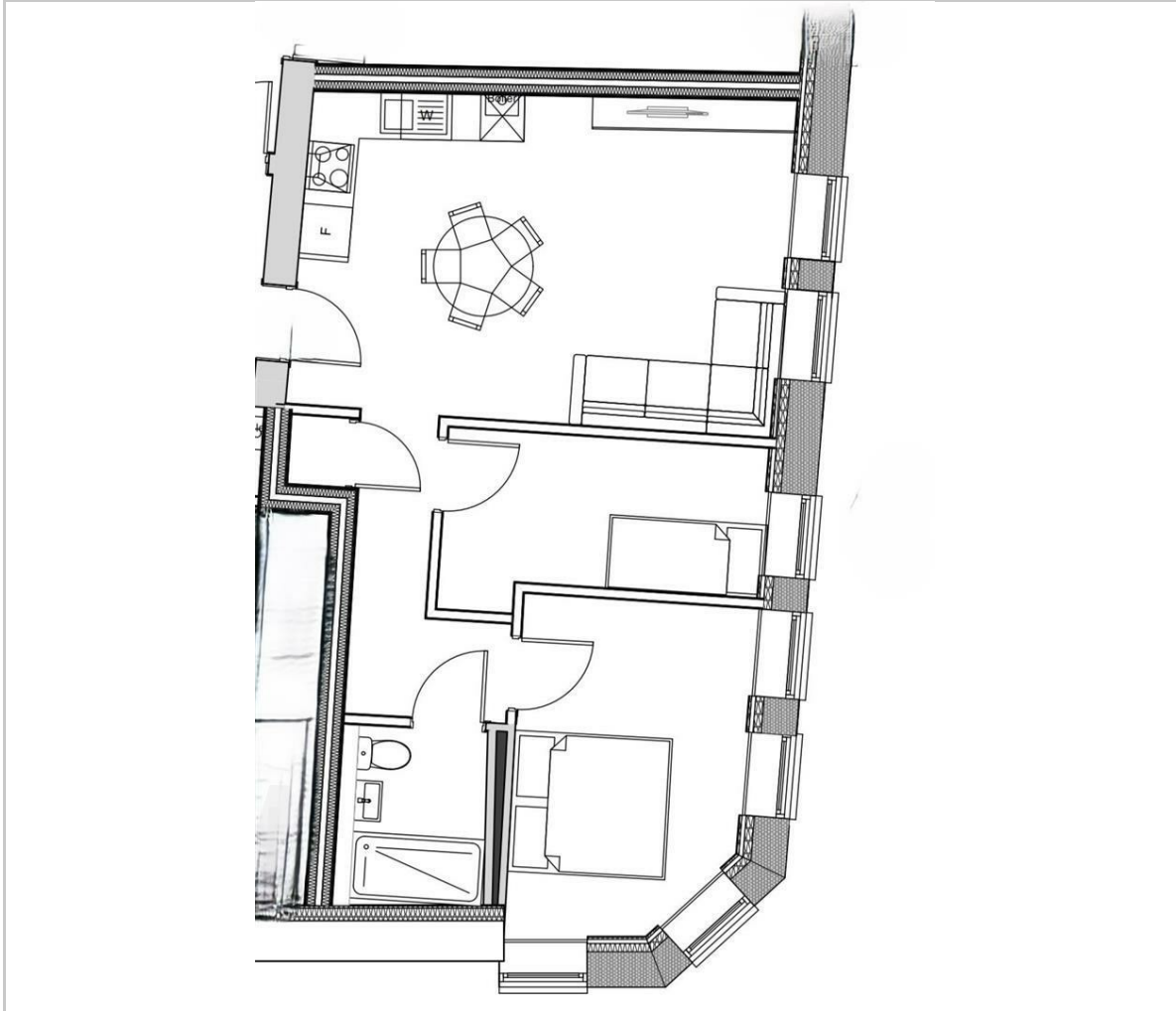
Guide Price - £240,000 - £250,000 - Flat 20
Dolphin Terrace is in the agents opinion one of the finest examples of affordable, town centre, two bedroom luxury living currently available. This stunning second floor apartment boasts luxury throughout and is ideal for FTB, investors or those that want to lock up and go without the worry of maintenance and gardening. The communal areas and apartment itself have been built to a high specification. Because of the location of this apartment and what is available on your doorstep, you can imagine getting home after a hard day at the office and walking to anyone of the local restaurants for a bite to eat. Poole Quay also has a number of shops, Tesco express and a Sainsbury's local both just a 2 minute walk away meaning there is rarely a need to make a trip to a larger store. There is a large Sainsburys and an Aldi just a few minutes away. Poole Quay, on the edge of Poole's stunning harbour, the worlds second largest natural harbour second to Sydney. Home to several Islands including National Trust site Brownsea Island, famous for establishing the Scout association and the Brownsea Open Air Theatre. Poole Quay is the final stop along the High Street, home to the Dolphin Shopping Centre and a huge range of local shops and department stores.

The historic charm of Poole Old Town still remains with a strong sense of its historical seventeenth century heyday. On the Quay itself is an impressive collection of traditional pubs and modern restaurants. Throughout the summer Poole Quay's schedule is packed with weekly bike, sports car and firework nights, along with Harry Paye day, folk and food festivals and many more. Just along the harbour is Harbourside, through to Poole Park, Whitecliff Park. Sandbanks, with its world famous beaches, and home to the beach polo is within 3 miles and the ferry to the Purbeck Hills and Studland, where Dorset's Jurassic coast is one of the UK's highlights is close by.





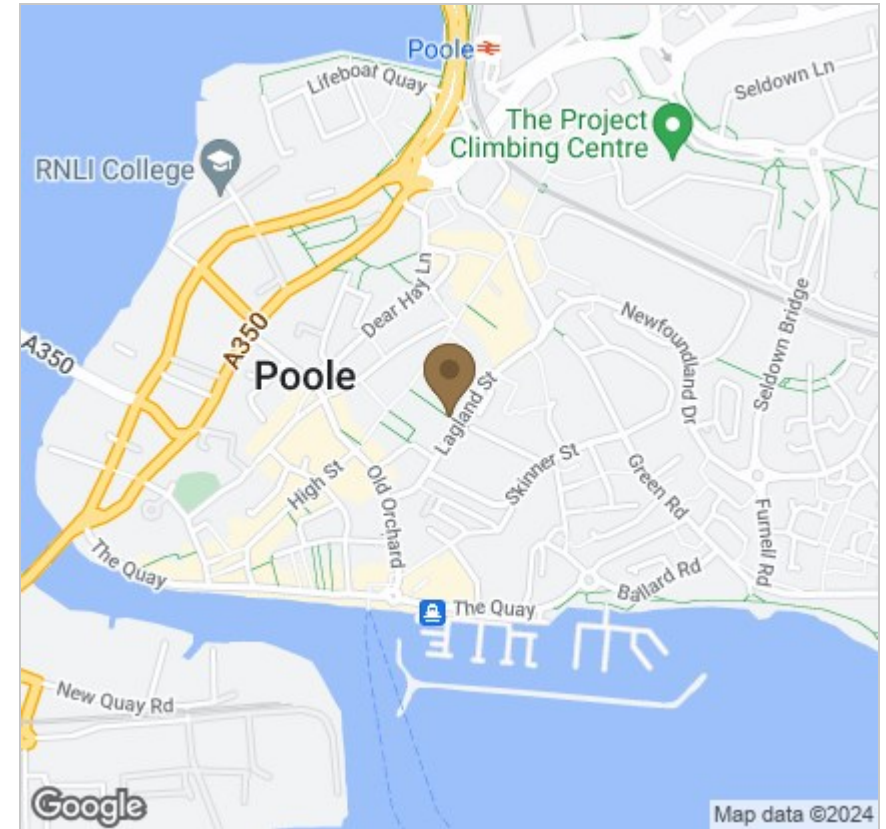
Floor Plan



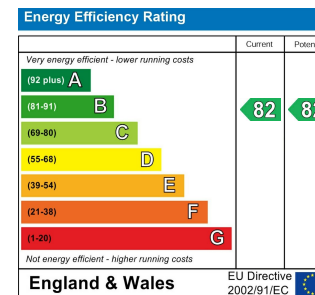
Viewing

Please contact our StQ Property Group Office on 01202877123 if you wish to arrange a viewing appointment for this property or require further information.

Area Map



Energy Efficiency Graph



These particulars, whilst believed to be accurate are set out as a general outline only for guidance and do not constitute any part of an offer or contract. Intending purchasers should not rely on them as statements of representation of fact, but must satisfy themselves by inspection or otherwise as to their accuracy. No person in this firm's employment has the authority to make or give any representation or warranty in respect of the property.