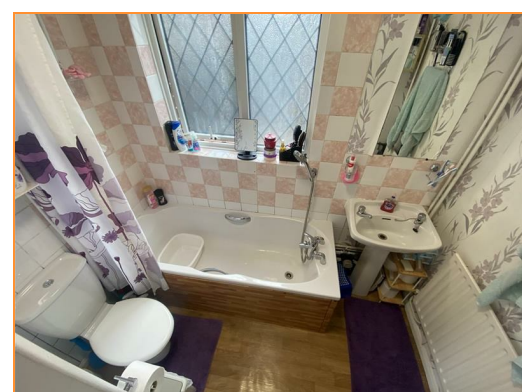
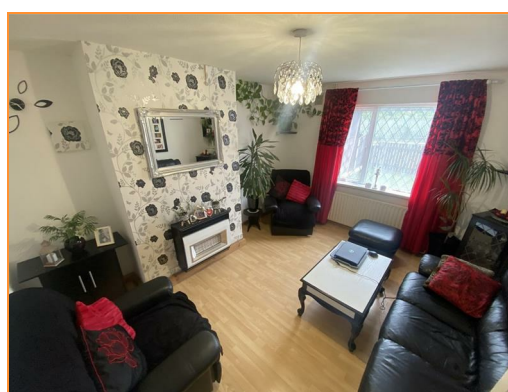




46 Tattershall Road, Boston, PE21 9LB

Price £170,000

Spacious 3 bedroom semi-detached house situated within walking distance of town centre and amenities.



46 Tattershall Road, Boston, PE21 9LB

Accommodation

IDEAL INVESTMENT OPPORTUNITY

Spacious 3 bedroom semi-detached house situated within walking distance of town centre and amenities.

Entrance

Entrance hall with storage cupboard and stairs leading to first floor. Laminate to floor.

Lounge

13'5" x 11'9" (4.1m x 3.6m)

With wall mounted fire, laminate to floor.

Kitchen

15'8" x 9'10" (4.8m x 3.0m)

With range of wall and base units, stainless steel sink with mixer tap and tiled splash backs. Gas cooker, plumbing for washing machine and space for fridge-freezer and dining table. Door leading to rear garden, laminate to floor.

Bathroom

With white 3 piece suite comprising bath with mixer shower over and tiled splash back, hand basin and WC. Laminate to floor.

Landing

Stairs and landing with carpet to floor.

Bedroom 1

11'9" x 9'2" (3.6m x 2.8m)

Double to front with built in storage. Laminate to floor.

Bedroom 2

11'5" x 6'6" (3.5m x 2.0m)

Double to rear with laminate to floor.

Bedroom 3

8'10" x 7'10" (2.7m x 2.4m)

Single to rear with laminate to floor.

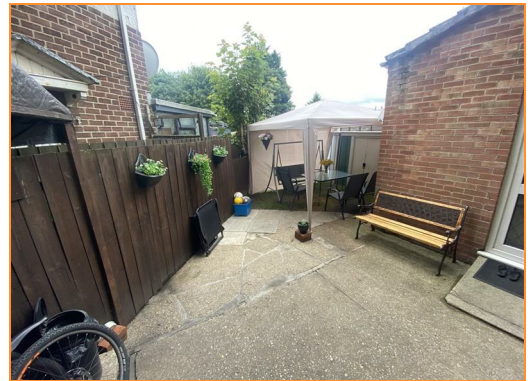
Additional Information

Gas central heating and double glazing throughout.

External

Fully enclosed front garden mainly lawned.

Fully enclosed rear garden mainly lawned with patio area and gate leading to front.



BELVOIR!