

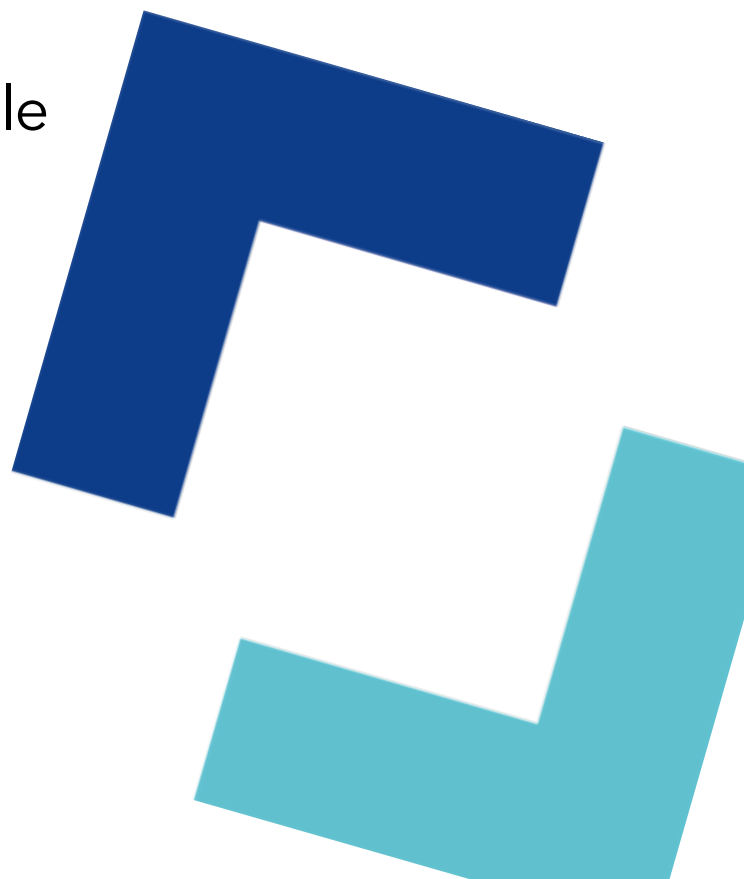


Farnborough Court, Clifton

One-bedroom flat

Independent living for people
aged 55 or over

 ncha



Specifications

Kitchen

- Fitted white modern kitchen with wall and floor cabinets and dark ash worktops
- Integrated electric oven and hob
- Stainless steel extractor hood
- Grey vinyl flooring

Shower room

- Wet room with walk-in shower
- Glass shower screen
- White toilet and sink
- Vinyl flooring
- Support aids from Invisible Creations, including towel rail, grab rail and toilet roll holder

Heating

- Electric - Air Source Heat Pumps
- Double glazed windows
- Solar panels
- Predicted energy assessment – A

External

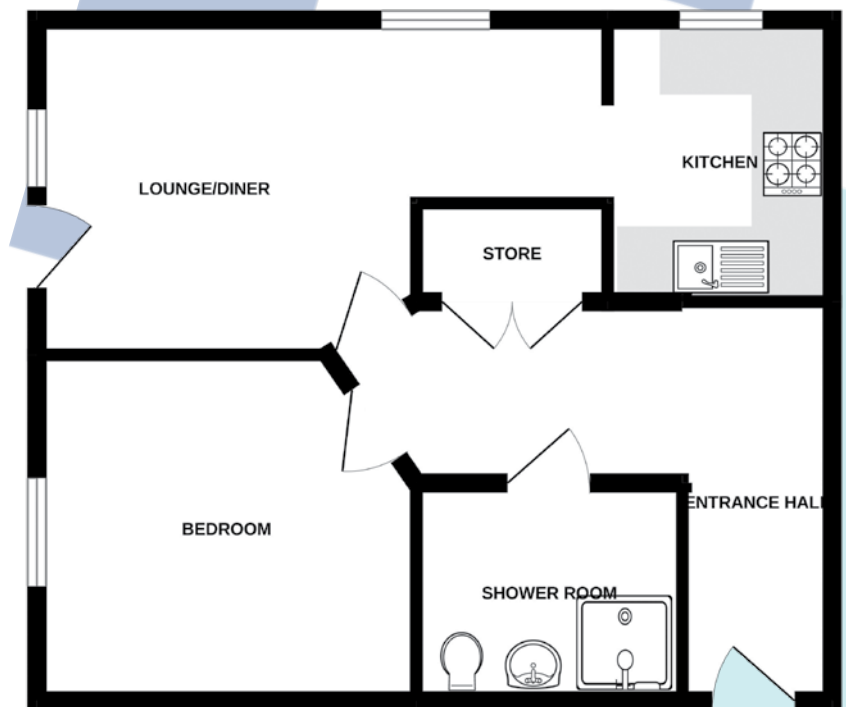
- Patio or balcony
- Communal car parking
- Communal garden

Decoration

- White walls and ceilings
- White gloss painted woodwork

Other

- Lift
- Scooter storage
- Laundry facilities
- Communal spaces



Room dimensions

Room	Dimensions
Lounge/dining	5.345m x 3.372m
Kitchen	2.420m x 2.690m
Bedroom 1	3.907m x 3.200m

Any measurements quoted are approximate and must be checked on site and against the layout, which may vary due to unforeseen circumstances. Floor plans may be mirror handed. These details have been produced for illustrative purposes only and does not form any part of a contract or constitute an offer. Actual specification may vary from that shown in the floor plan.

How to find us

The flats are currently being built on the old South Nottingham College site off Farnborough Road in Clifton in Nottinghamshire. If using a SatNav, the postcode is NG11 8LU.