



2-7 Joseph Close, Burgh Le Marsh,
Skegness, Lincs, PE24 5SF

***** COMING SOON *****

BRAND NEW 4 & 5 BEDROOM EXECUTIVE HOMES.

An exclusive development of 4 & 5 Bedroom Detached Houses in the popular village of Burgh Le Marsh which is located approximately 5 miles inland from the coastal resort of Skegness and within easy reach of the picturesque Lincolnshire Wolds and historic Market Towns.

To be built to the highest standard by The Welton Group these properties will offer 4/5 Bedrooms each with 3 plus En-Suites and a Family Bathroom, open plan living areas, and a double Garage. Expressions of interest are invited.



2 & 7 Josephs Close

- Lounge
- Study
- Kitchen Diner & Orangery
- Utility Room
- 5 Bedrooms
- 4 En-Suites & Family Bathroom
- Games Room
- Double Garage



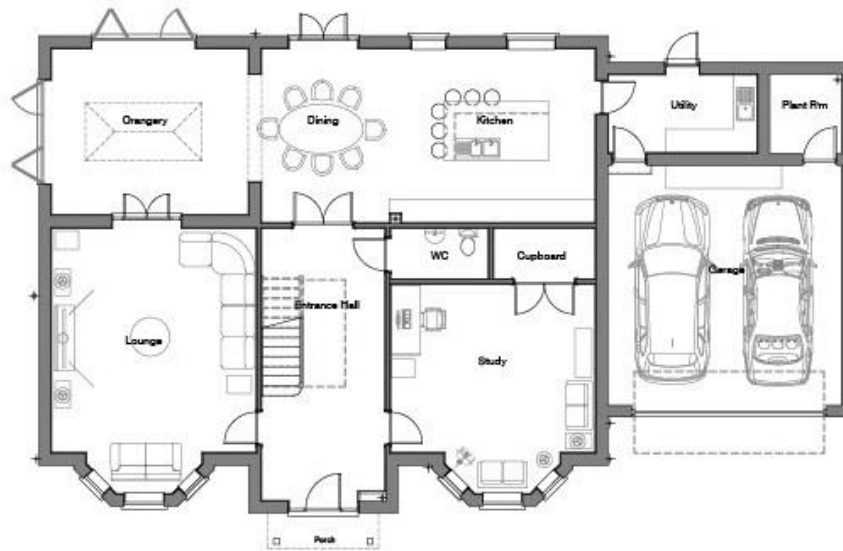
GROUND FLOOR



FIRST FLOOR

3 & 4 Josephs Close

- Lounge
- Study
- Kitchen Diner & Orangery
- Utility Room
- 5 Bedrooms
- 4 En-Suites & Family Bathroom
- Double Garage



GROUND FLOOR



FIRST FLOOR

5 Josephs Close

- Lounge
- Study
- Kitchen Diner & Snug
- Utility Room
- 4 En-suite Bedrooms
- Family Bathroom
- Double Garage



GROUND FLOOR

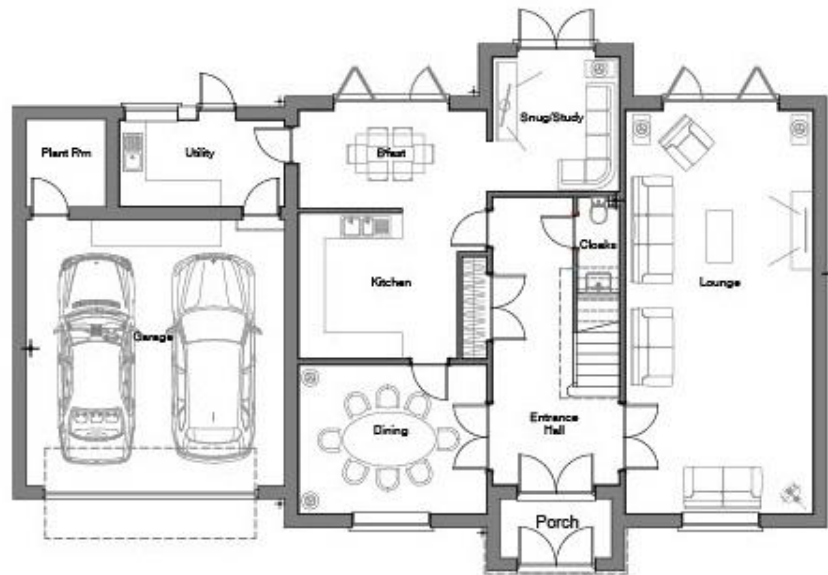


FIRST FLOOR

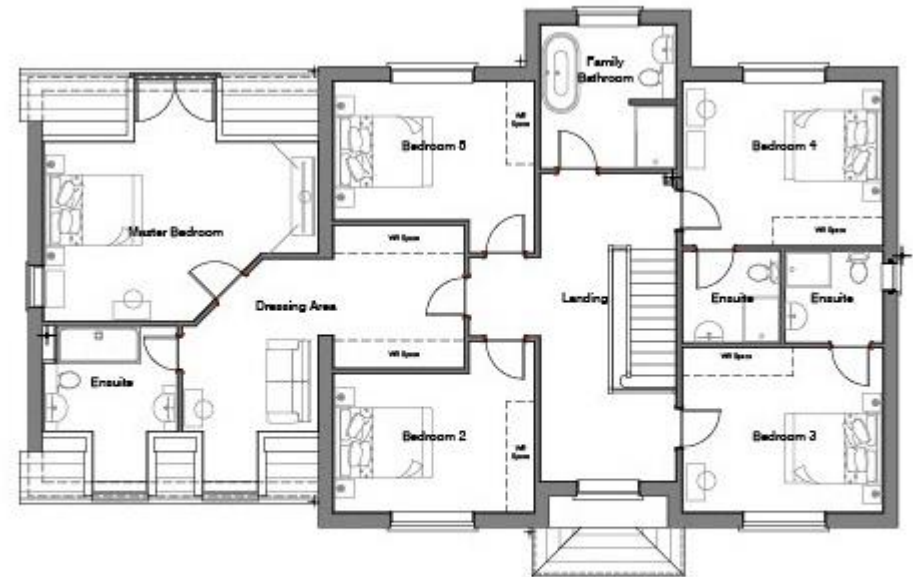
6 Josephs Close



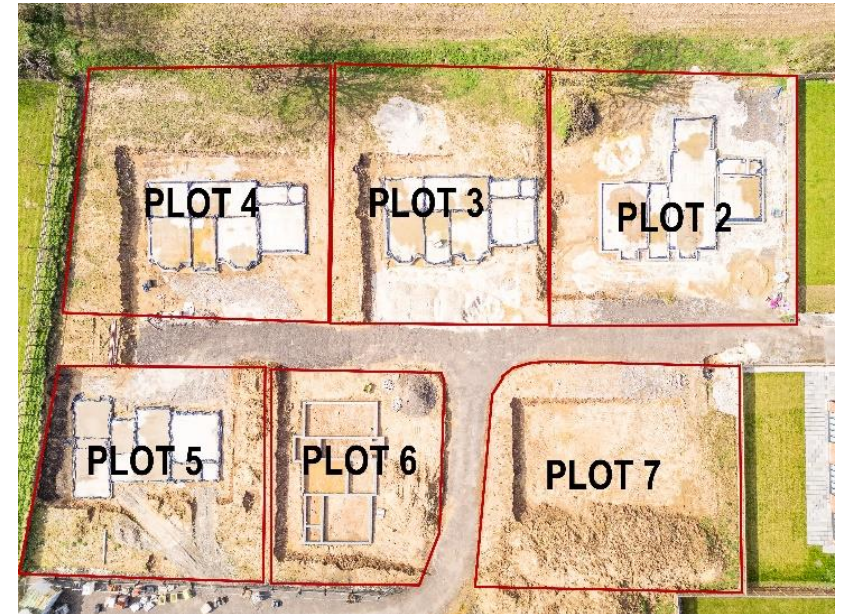
- Lounge
- Study / Snug
- Kitchen, Dining Room & Breakfast Room
- Utility Room
- 5 Bedrooms
- 3 En-Suites & Family Bathroom
- Double Garage



GROUND FLOOR



FIRST FLOOR



 **NEWTON FALLOWELL**