

Stourport Road, Kidderminster, Worcestershire, DY11



TO LET

SIZE: APPROX. 4,130 SQ/FT

- ◇ ESTABLISHED INDUSTRIAL LOCATION
- ◇ 24-HR MANNED SECURITY
- ◇ OPEN PLAN OFFICES
- ◇ ON-SITE PARKING
- ◇ SECURE GATED ESTATE
- ◇ CCTV
- ◇ HIGH SPECIFICATION

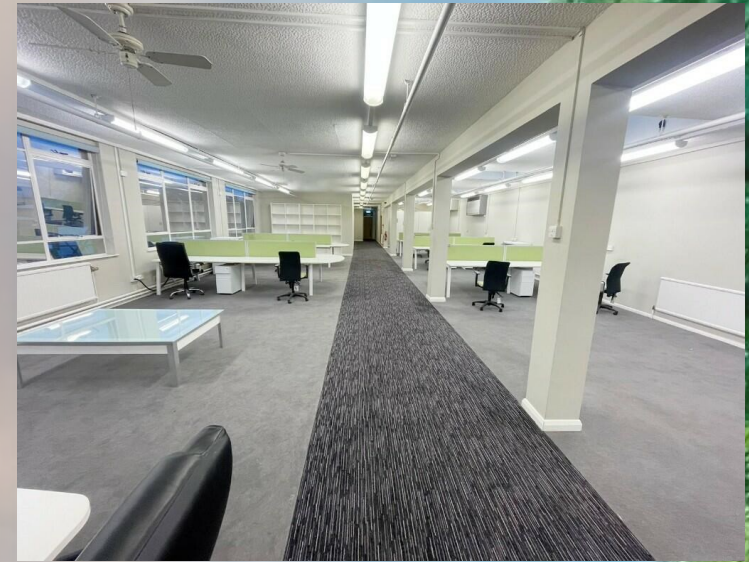
Westprop.

LOCATION

The property is located directly off the main A451 Stourport Road in Kidderminster providing direct access to Kidderminster Town Centre approximately 2 miles to the north.

Stourport Road benefits from the recently opened Hoo Brook Link Road, alleviating traffic off the local road network and providing swift access to the ring road and in turn, all major routes out of the town to Birmingham, Worcester and the M5 motorway.

Surrounding occupiers include Power Equipment Services, Vision Labs, IGS, Were Forest District Council and Aldi.



DESCRIPTION

This property comprises of a two-story office complex with high specification throughout.

The section available to let is approximately 4,130 sq/ft, with an open-plan layout along with multiple management suites.

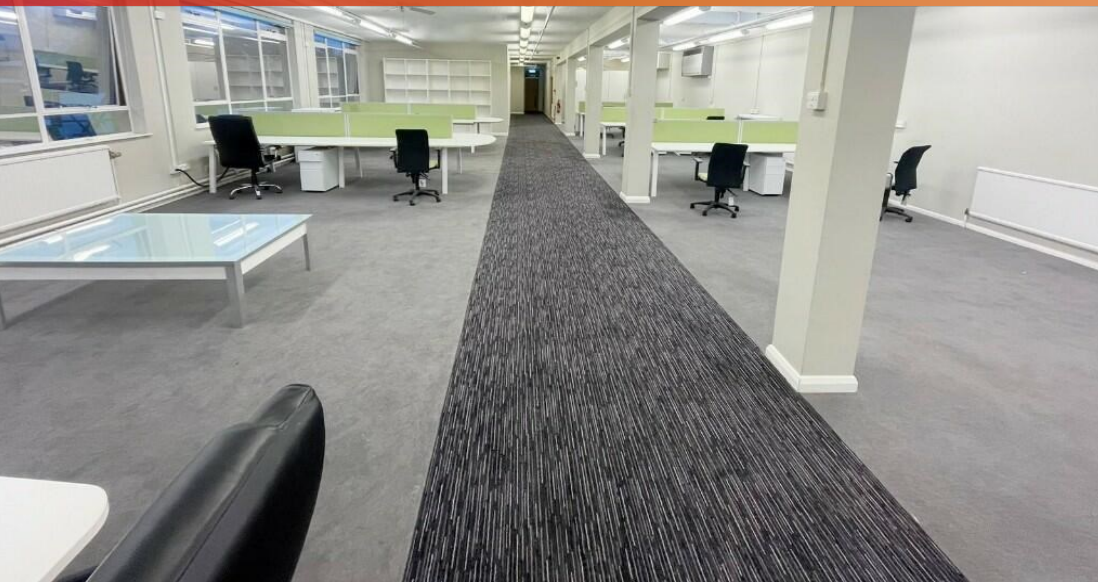
Additionally, there is the ability to sub-divide the section, subject to requirements.

PLANNING

We advise all interested parties to make their own enquiries with the local authority.



Stourport Road, Kidderminster, Worcestershire, DY11



Stourport Road, Kidderminster, Worcestershire, DY11



Westprop.

Westprop.

The logo for Westprop. features the word "Westprop." in a bold, sans-serif font. The letters are colored with a gradient from yellow on the left to red on the right. Below the text is a thick horizontal bar that also follows the yellow-to-red gradient. The bar starts under the 'W', extends across the width of the text, and then turns 90 degrees downwards at the end of the period.

1 Hospital Street, Birmingham B19 3PY

office@westerntrading.co.uk

TEL : 0121 200 3377