

# Day Street, Walsall, West Midlands, WS2



**TO LET**

**SIZE: APPROX. 1,600 SQ/FT**

**Westprop.**

**THE TANNE**

## LOCATION

The property is located on Day Street, just 30 seconds from the new Walsall College and 2-3 mins walk south, to Walsall High Street.

There is good access with the A4148 ring road which links with junction 9 M6 2 miles south and also the M5/M6 junction 2, 1/2 mile south.

## DESCRIPTION

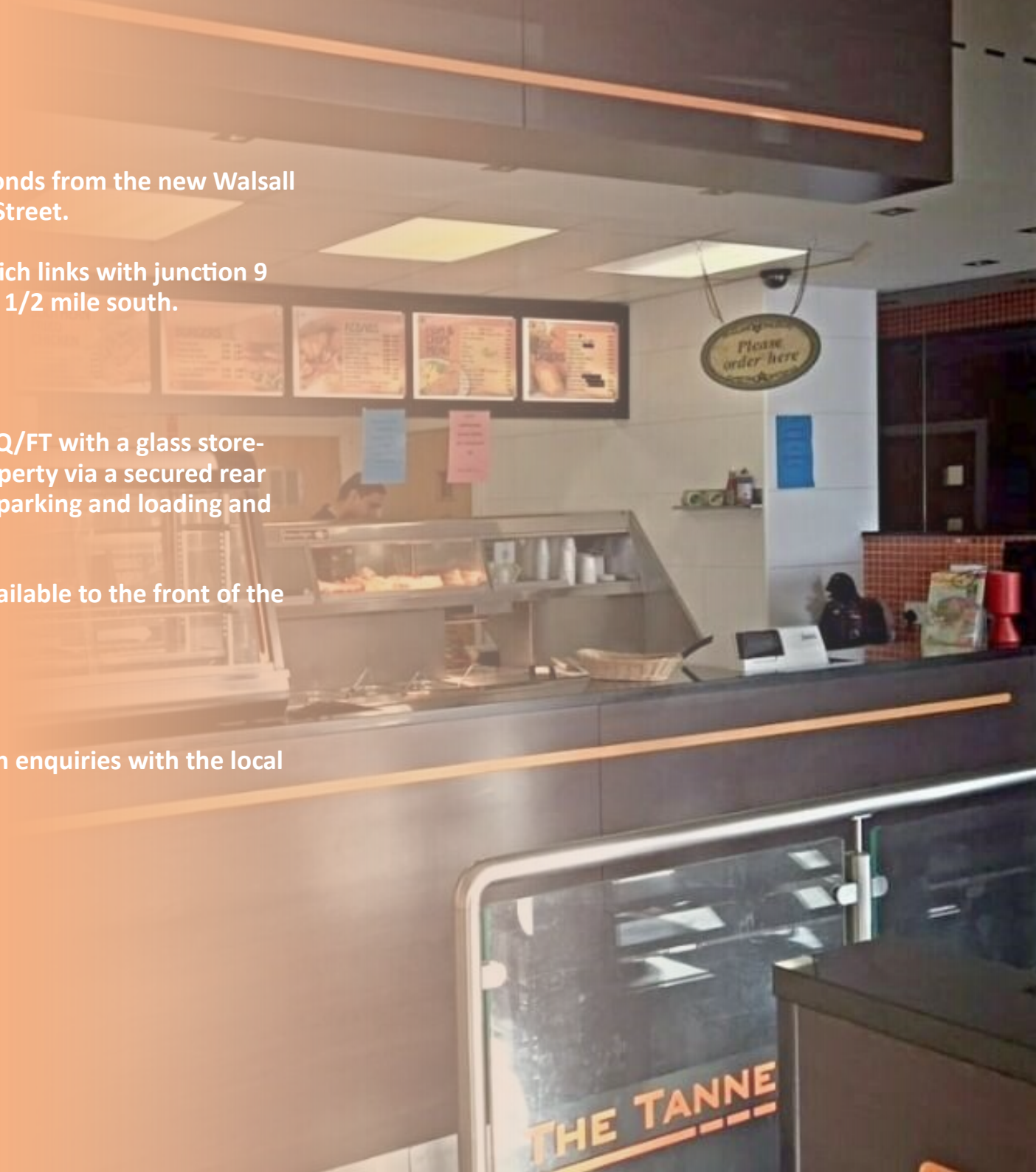
A ground-floor premises of approximately 1600 SQ/FT with a glass store-front and rear aluminum doors leading to the property via a secured rear parking area which can also be used as customer parking and loading and unloading.

It benefits from natural light and car parking is available to the front of the premises and to the rear.

## PLANNING

We advise all interested parties to make their own enquiries with the local authority.

- **ADJACENT TO TOWN CENTRE**
- **FRONT & REAR ACCESS**
- **GLASS STORE FRONT**
- **LOADING & PARKING AVAILABLE**
- **AMPLE NATURAL LIGHT**



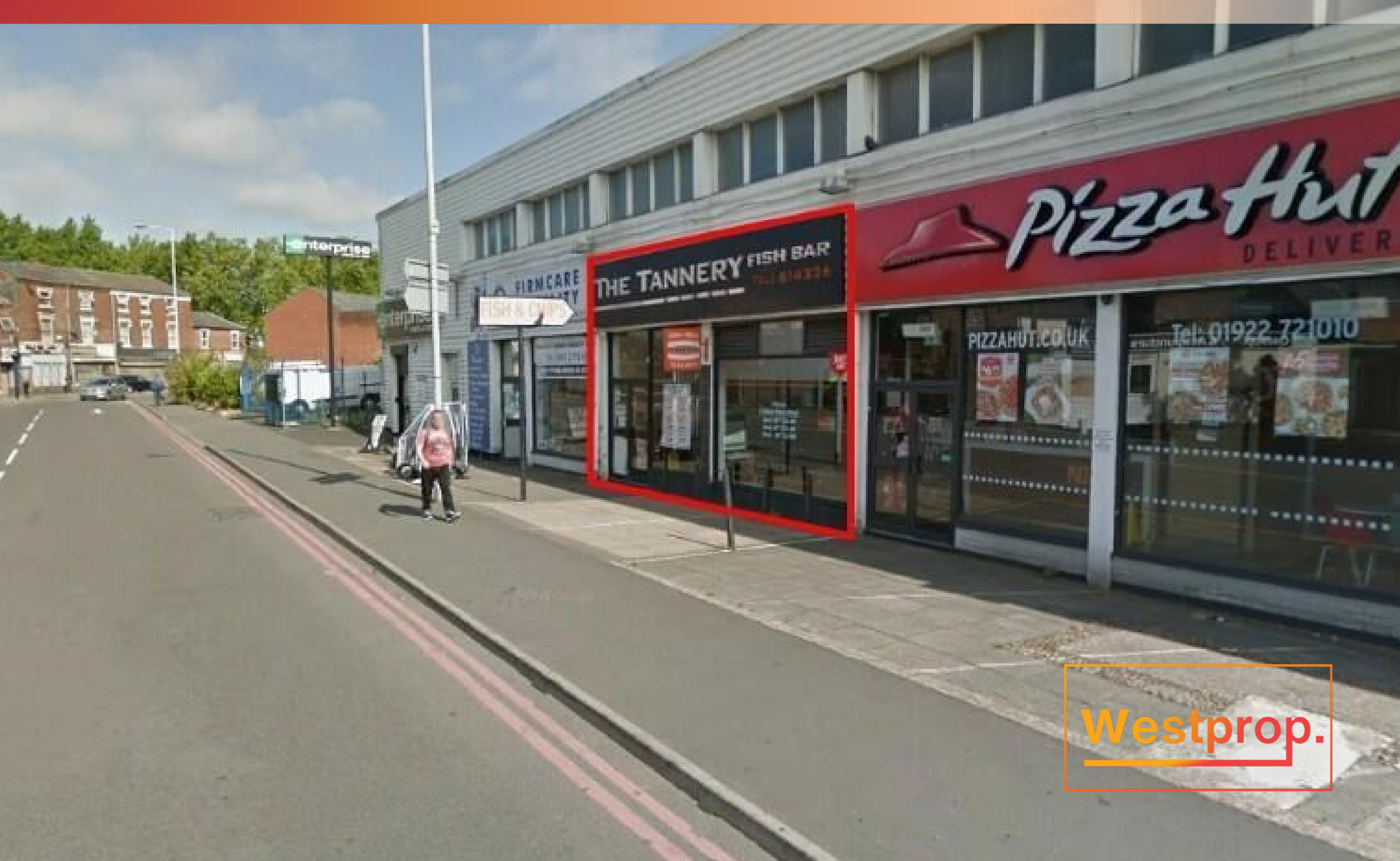


# Day Street, Walsall, West Midlands, WS2





# Day Street, Walsall, West Midlands, WS2



Westprop.

# Westprop.

The logo for Westprop. features the word "Westprop." in a bold, sans-serif font. The letters are colored with a gradient from yellow on the left to red on the right. Below the text is a thick horizontal bar that also follows the yellow-to-red gradient. The bar starts under the 'W', extends across the width of the text, and then turns 90 degrees downwards at the end of the period.

1 Hospital Street, Birmingham B19 3PY

[office@westerntrading.co.uk](mailto:office@westerntrading.co.uk)

TEL : 0121 200 3377