





Chiltern Court, Widmore Road, Uxbridge

Offers Over £499,950


 3  1  2



910 Uxbridge Road, Hayes
Middlesex UB4 0RW

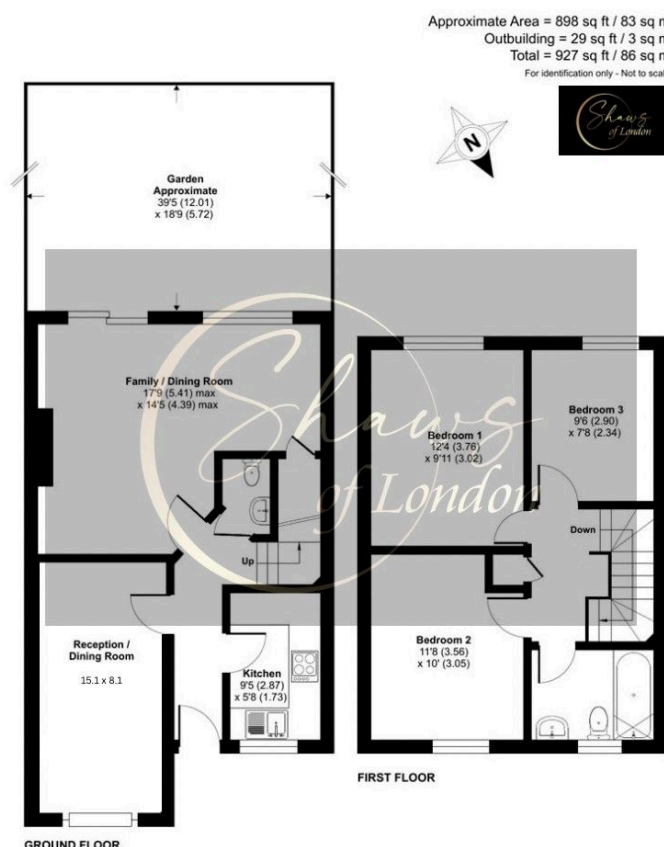
info@shawsoflondon.co.uk
www.shawsoflondon.co.uk

020 8561 6888

 @shawsoflondon

"Shaws of London" is the trading name of Shaw & Co Estates (UK) Ltd

- Available Immediately - Chain Free!
- Three/Four Bedroom House For Sale
- Separate WC downstairs
- Spacious Private Rear Garden 60 foot
- Brilliant Bus Links To Uxbridge Station & Hayes Harlington Station
- Close To All Schools & Shops
-
-




AVAILABLE IMMEDIATELY - CHAIN FREE

Well-presented three/four bedroom mid-terraced family home just off Uxbridge Road, featuring a spacious reception, modern kitchen, family bathroom plus ground floor W/C, off-street parking, gas central heating, double glazing, and a large private rear garden. Ideally located with excellent bus links to Hillingdon Hospital, Stockley Business Park, and Uxbridge Town Centre.

910 Uxbridge Road, Hayes
 Middlesex UB4 0RW

info@shawsoflondon.co.uk
 www.shawsoflondon.co.uk

020 8561 6888

 @shawsoflondon