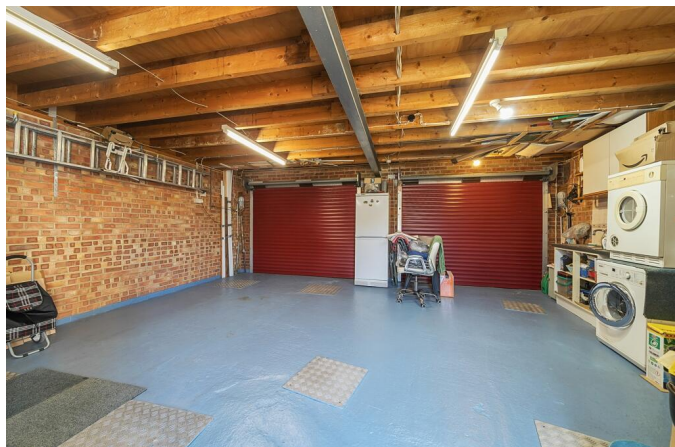


Adelphi Crescent, Hayes, UB4 8ND

Guide Price £575,000

3 1 1




Well-presented chain-free 3-bed corner semi in North Hayes ✨ Spacious lounge/diner, modern kitchen, family bathroom, 47ft garden 🌳, wide frontage with parking & double garage 🚗. Excellent location near schools, shops & transport links 📍

910 Uxbridge Road, Hayes
Middlesex UB4 0RW

info@shawsoflondon.co.uk
www.shawsoflondon.co.uk

020 8561 6888

 @shawsoflondon

- Three Bedroom Semi Detached
- Potential to Extend Further (STPP)
- Detached Double Brick Built Garage
- Fitted Kitchen
- Driveway For Multiple Cars
- No Onward Chain
- Corner Plot - Potential for Double Storey (STPP)
- Through Lounge
- Council Tax Band - D
- Potential Rental (as it is) £2500 PCM

Adelphi Crescent, Hayes, UB4

Approximate Area = 726 sq ft / 67.4 sq m

Garage = 352 sq ft / 32.7 sq m

Total = 1078 sq ft / 100.1 sq m

For identification only - Not to scale

