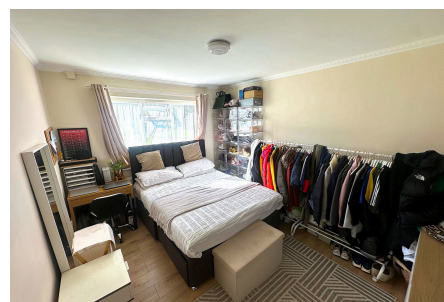
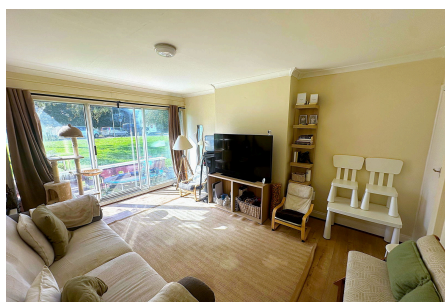




Bourne Avenue, Hayes, UB3 1QX

£280,000

🛏 2 🚿 1 🚗 1



LOCATION!! CHAIN FREE!! Shaws of London present a wonderful two bedroom ground floor flat in Hayes UB3. Property comes with on street parking, two spacious bedrooms, large reception room, a sizeable kitchen and a good size family bathroom suite. Located walking distance Pinkwell Primary School, local shops amenities on your doorstep. Excellent transport links to Hayes & Harlington Station, Stockley Business Park & Heathrow Airport. Ideal first time purchase or investment due to size and location. Not to be missed, call our sales team to view!

910 Uxbridge Road, Hayes
Middlesex UB4 0RW

info@shawsoflondon.co.uk
www.shawsoflondon.co.uk

020 8561 6888

@shawsoflondon

"Shaws of London" is the trading name of Shaw & Co Estates (UK) Ltd

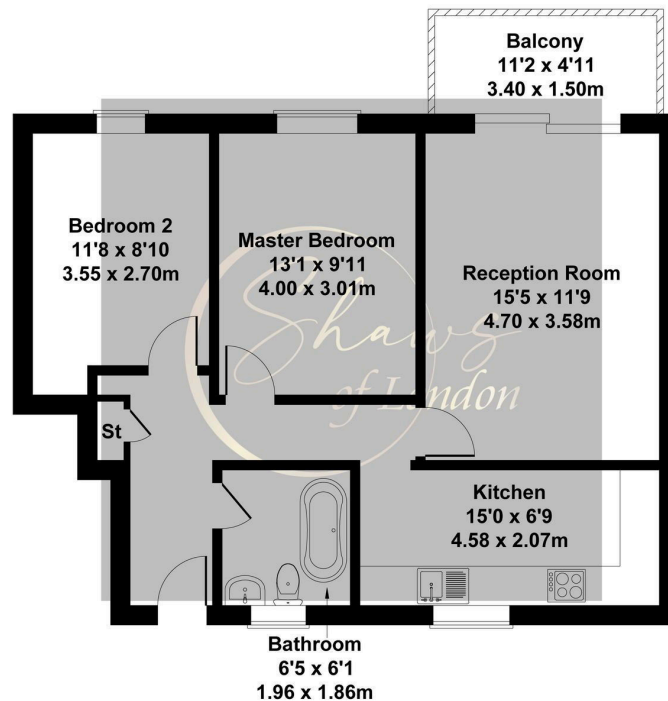


Key Features

- Large Two Bedroom Ground Floor Flat
- Excellent Location
- Low Service Charge and Ground Rent
- Ideal First Time Purchase
- Chain Free
- Spacious Reception Room
-
-

Fairbourne Avenue

Approximate Gross Internal Area
700 sq ft - 65 sq m



GROUND FLOOR

Not to Scale. Produced by The Plan Portal 2024
For Illustrative Purposes Only.

910 Uxbridge Road, Hayes
Middlesex UB4 0RW

info@shawsoflondon.co.uk
www.shawsoflondon.co.uk

020 8561 6888

@shawsoflondon