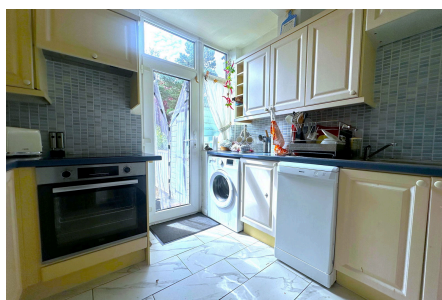


The Meadow Way, Harrow, HA3 7BW

£279,950

🛏 1 🚿 1 🛋 1




Shaws of London are proud to bring to market this stunning ground floor one bedroom maisonette situated in North Harrow Wealdstone. Upon entering you are greeted by a spacious hallway, large sitting room, sizeable kitchen, family shower suite and a large bedroom leading onto a rear decking/garden area. Benefiting from on street parking, south facing garden long lease and no ground rent/service charge costs. Excellent investment opportunity or first time purchase due to the location and appeal of the property. Call our sales team now to view! 020 8561 6888.

910 Uxbridge Road, Hayes
Middlesex UB4 0RW

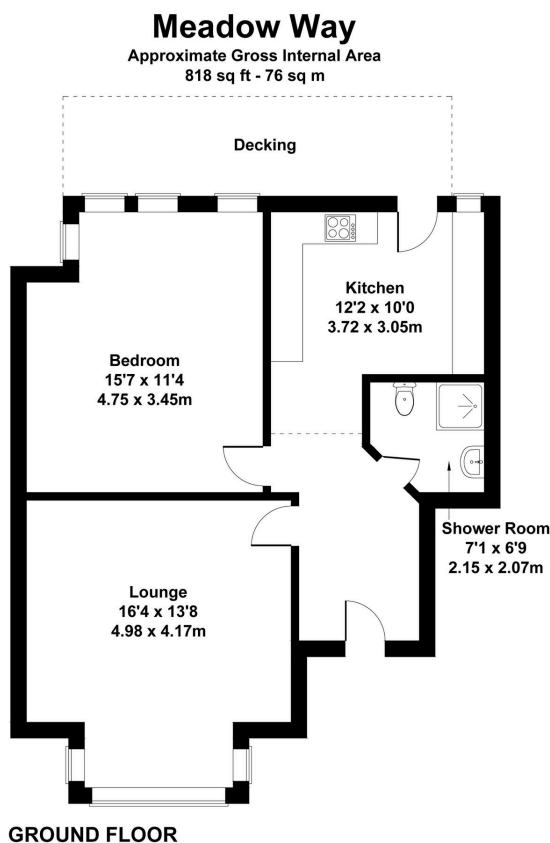
info@shawsoflondon.co.uk
www.shawsoflondon.co.uk

020 8561 6888

 @shawsoflondon

Key Features

- Beautiful location - North Harrow Wealdstone
- Ground Floor One Bedroom Maisonette
- Large Reception Room
- No Ground Rent / No Service Charge
- Walking Distance To Harrow Wealdstone Station
- Private Rear Garden + Decking Area
- Excellent Investment / First Time Purchase
- Long Lease



Not to Scale. Produced by The Plan Portal 2024
For Illustrative Purposes Only.

