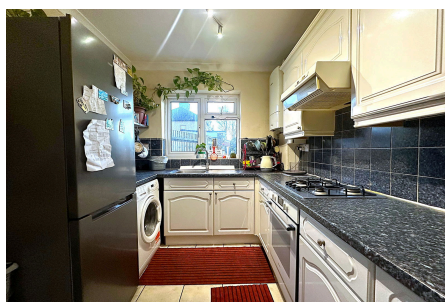




## Bomer Close, Sipson, West Drayton, UB7 0JP

Offers In Region Of £535,000

🛏 3 🚿 2 🚗 1



### Spacious 3-Bedroom Semi-Detached Home with Rear Garage & Driveway

Situated in brilliant location, this three-bedroom semi-detached home offers generous living space, modern comforts, and excellent convenience. Positioned close to local amenities, schools, and transport links, this fantastic home combines space, practicality, and location. Don't miss the opportunity to make it yours!

910 Uxbridge Road, Hayes  
Middlesex UB4 0RW

info@shawsoflondon.co.uk  
www.shawsoflondon.co.uk

020 8561 6888

📱 @shawsoflondon

"Shaws of London" is the trading name of Shaw & Co Estates (UK) Ltd

# Key Features

- 
- 
- 
- 
- 
- 

