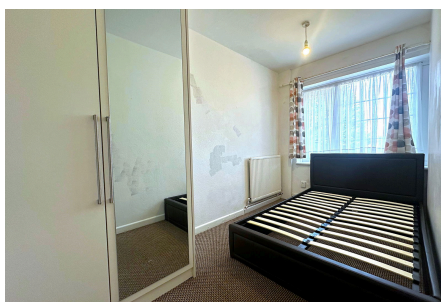
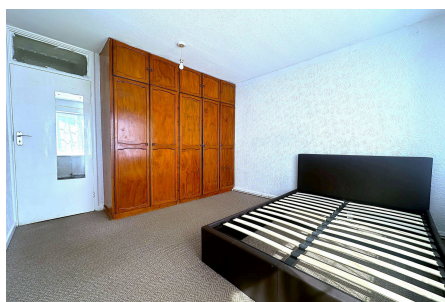


Keats Close, Hayes, UB4

Offers Over £450,000

3 1 2




Shaws of London bring to market a wonderful three bedroom first floor maisonette in Hayes UB4, with a long lease this property is an ideal first time purchase or investment. Brilliant catchment for schools and transport links into Central London, Northolt & Uxbridge.

910 Uxbridge Road, Hayes
Middlesex UB4 0RW

info@shawsoflondon.co.uk
www.shawsoflondon.co.uk

020 8561 6888

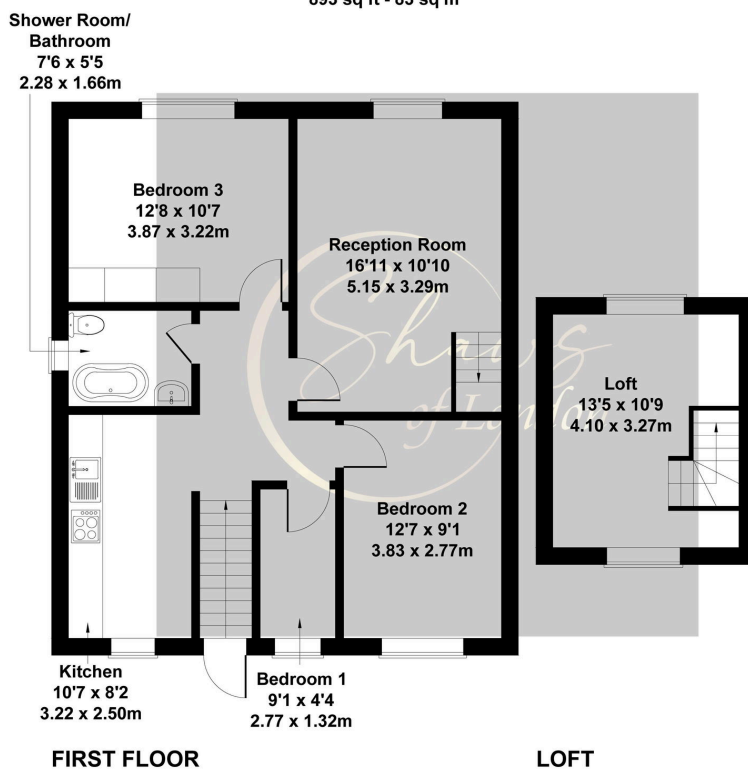
 @shawsoflondon

Key Features

- Comes With Single Garage
- Good Catchment For Schools & Local Amenities.
- Good Size Bathroom & Kitchen
- Spacious Bedrooms
- Ground Rent Peppercorn & No Service Charge
- Over 950 Years Lease
- Chain Free
- Fantastic Location

Keats Close

Approximate Gross Internal Area
893 sq ft - 83 sq m




Not to Scale. Produced by The Plan Portal 2024
For Illustrative Purposes Only.

910 Uxbridge Road, Hayes
Middlesex UB4 0RW

info@shawsoflondon.co.uk
www.shawsoflondon.co.uk

020 8561 6888

 @shawsoflondon