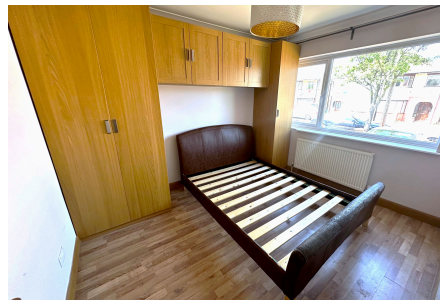


Sandown Way, Northolt, UB5 4HZ

£430,000

 2  1  2




LOCATION!! INVESTMENT!! ** CASH BUYERS ONLY ** Shaws of London bring to market a two bedroom semi-detached bungalow situated in a fantastic location in Northolt UB5. Property comes with two good size bedrooms, large reception room, nice size kitchen and family bathroom. To the rear is a private rear garden, large garage for storage and parking on the front for 2-3 vehicles. Located within a short walk to Northolt Tube Station (Central Line) and, South Ruislip on your door step with an array of shops/amenities and public transport. Call our sales team to view!

910 Uxbridge Road, Hayes
Middlesex UB4 0RW

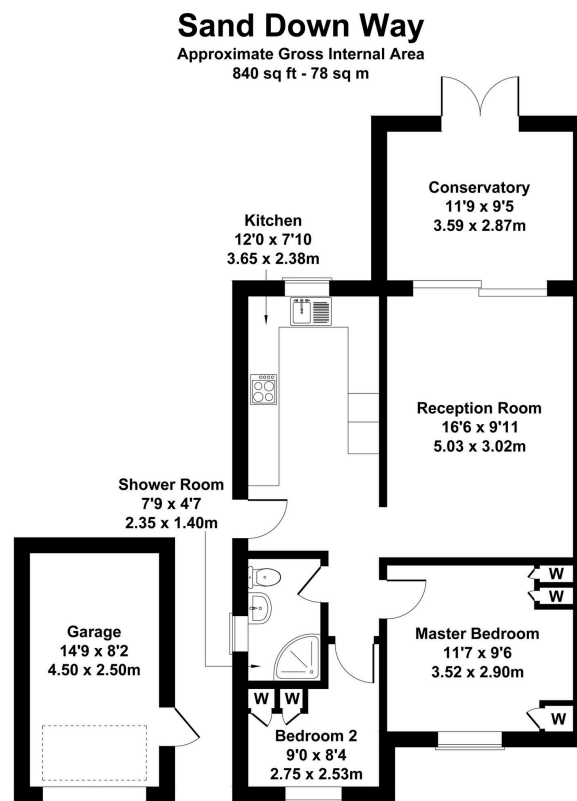
info@shawsoflondon.co.uk
www.shawsoflondon.co.uk

020 8561 6888

 @shawsoflondon

Key Features

- Cash Buyers Only
- Excellent Location
- Sizeable Plot
- Short Walk To Northolt Tube Station (Central Line)
- Fantastic Yield On Rental Return
- Ideal Investment
- Close To All Shops/Amenities
- Potential For Loft Extension & Rear Extension
- Excellent Catchment For Schools



GARAGE

Not to Scale. Produced by The Plan Portal 2024
For Illustrative Purposes Only.

